

| | | | |
|--|------------------------|-----------------------------|---|
| WAAS CH 56509 W13A | APP CRS 135° | Rwy Idg TDZE Apt Elev | 5310 656 656 |
|--|------------------------|-----------------------------|---|

RNAV (GPS) RWY 13

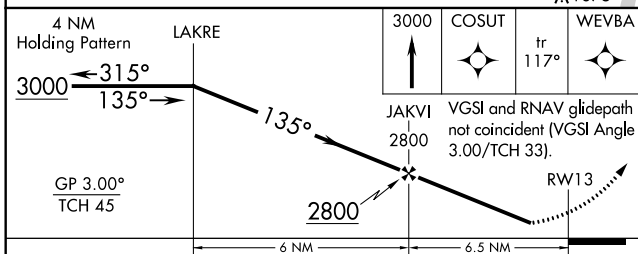
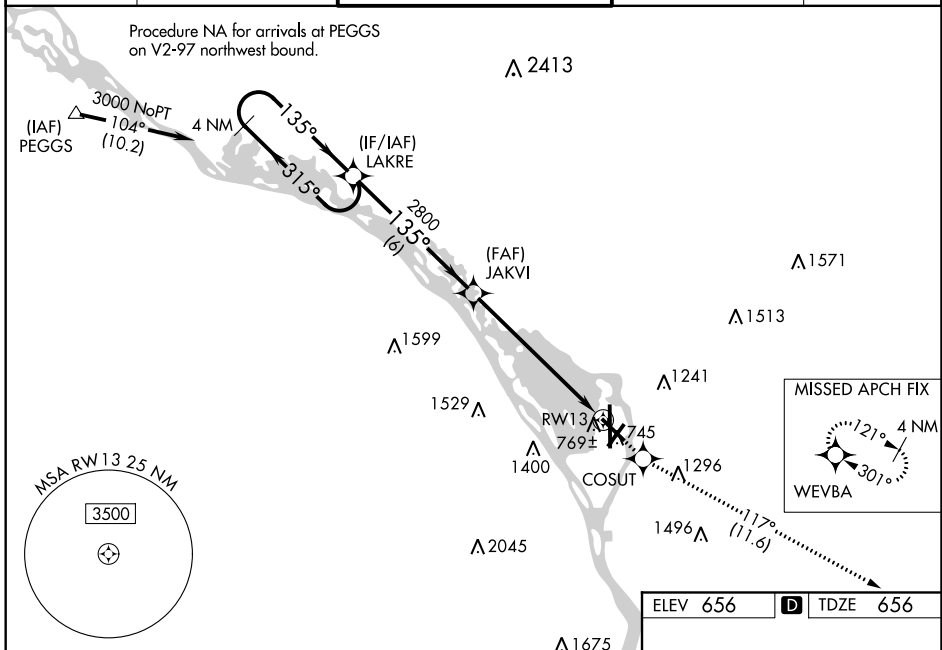
LA CROSSE RGNL (LSE)

Baro-VNAV NA when using Winona altimeter setting. For uncompensated Baro-VNAV systems, LNAV/VNAV NA below -27° C (-16° F) or above 54° C (130° F). DME/DME RNP-0.3 NA. Helicopter visibility reduction below ¾ SM NA. Circling to Rwy 22 NA at night. When local altimeter setting not received, use Winona altimeter setting and increase DA 53 feet, increase LPV and LNAV/VNAV visibility ¼ mile all Cats, increase all MDA 60 feet, increase LNAV Cats C/D and Circling Cat B visibility ¼ mile.

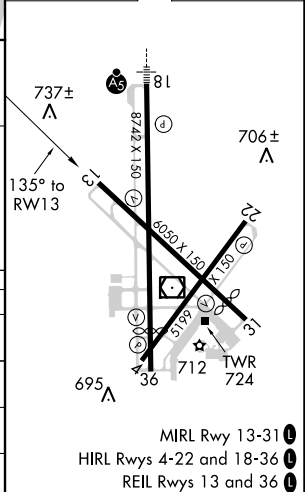
MISSED APPROACH: Climb to 3000 direct COSUT and on track 117° to WEVBA and hold.

-20°C

| | | | | |
|-----------------------|--|---|-------------------------|-------------------------|
| ATIS 124.95 | MINNEAPOLIS CENTER 128.6 363.0 | LA CROSSE TOWER * 118.45 (CTAF) 0 251.075 | GND CON 121.8 | UNICOM 122.95 |
|-----------------------|--|---|-------------------------|-------------------------|



| | |
|----------|-------------------|
| ELEV 656 | D TDZE 656 |
|----------|-------------------|



| CATEGORY | A | B | C | D |
|-------------------|-----------------------|-----------------------|-------------------------|-------------------------|
| LPV DA | 958-1 302 (400-1) | | | |
| LNAV/VNAV DA | 1020-1¼ 364 (400-1¼) | | | |
| LNAV MDA | 1140-1 | 484 (500-1) | 1140-1⅝ 484 (500-1⅝) | 1140-1½ 484 (500-1½) |
| C CIRCLING | 1140-1 484 (500-1) | 1460-1 804 (900-1) | 1760-3 1104 (1200-3) | 1820-3 1164 (1200-3) |

MIRL Rwy 13-31
HIRL Rwys 4-22 and 18-36
REIL Rwys 13 and 36

EC-3, 31 JAN 2019 to 28 FEB 2019

EC-3, 31 JAN 2019 to 28 FEB 2019