

LOC I-LSE 111.1	APP CRS 180°	Rwy Idg 8536
		TDZE 653
		Apt Elev 656

ILS or LOC RWY 18

LA CROSSE RGNL (LSE)

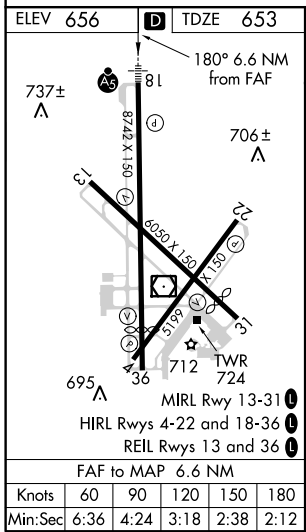
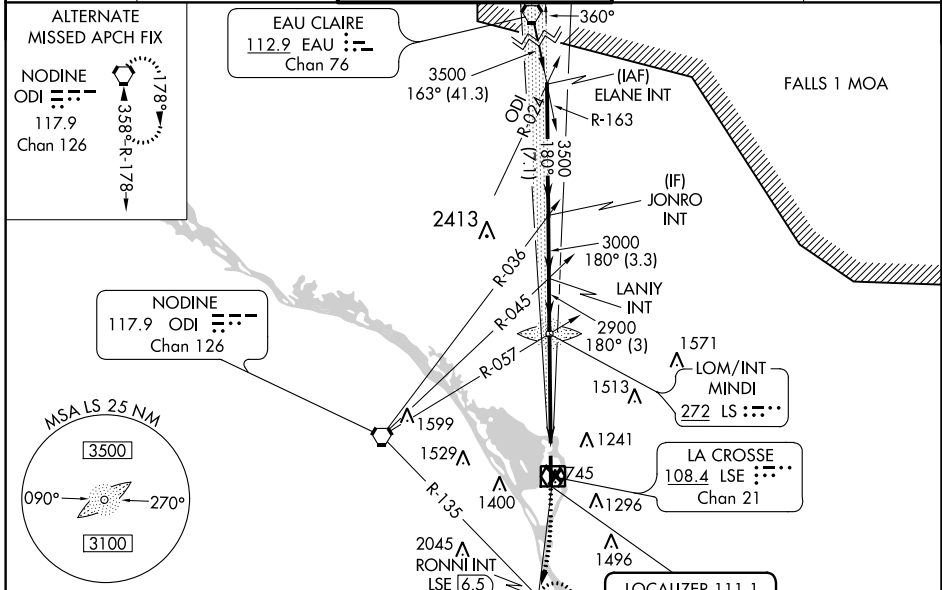
⚠ Circling to Rwy 22 NA at night. When local altimeter setting not received, use Winona altimeter setting and increase all DA/MDA 60 feet; increase S-LOC 18 Cat A visibility to ¾.

⚠ -20°C

MALSR

MISSED APPROACH: Climb to 1400 then climbing right turn to 3400 on LSE VOR/DME R-188 to RONNI INT/LSE 6.5 DME and hold, continue climb-in-hold to 3400.

ATIS 124.95	MINNEAPOLIS CENTER 128.6 363.0	LA CROSSE TOWER ★ 118.45 (CTAF) 251.075	GND CON 121.8	UNICOM 122.95
-----------------------	--	---	-------------------------	-------------------------



	JONRO INT	LANIY INT	MINDI LOM/INT	RONNI INT
	3500	3000	2864	
	3.3 NM	3 NM	6.6 NM	
GS 3.00° TCH 55				
CATEGORY	A	B	C	D
S-ILS 18	853-½ 200 (200-½)			
S-LOC 18	1520-½ 867 (900-½)	1520-¾ 867 (900-¾)	1520-2 867 (900-2)	
<input checked="" type="checkbox"/> CIRCLING	1520-1¼ 864 (900-1¼)		1760-3 1104 (1200-3)	1820-3 1164 (1200-3)

EC-3, 31 JAN 2019 to 28 FEB 2019

EC-3, 31 JAN 2019 to 28 FEB 2019