

# BLUBELL THREE ARRIVAL

HOUSTON, TEXAS

SC-5, 31 JAN 2019 to 28 FEB 2019

**ARRIVAL ROUTE DESCRIPTION**

**ELLVR TRANSITION (ELLVR.BLUBL3):** From over ELLVR INT via CLL R-334 to CLL VORTAC, then on CLL R-153 to BLUBL INT. Thence . . . .

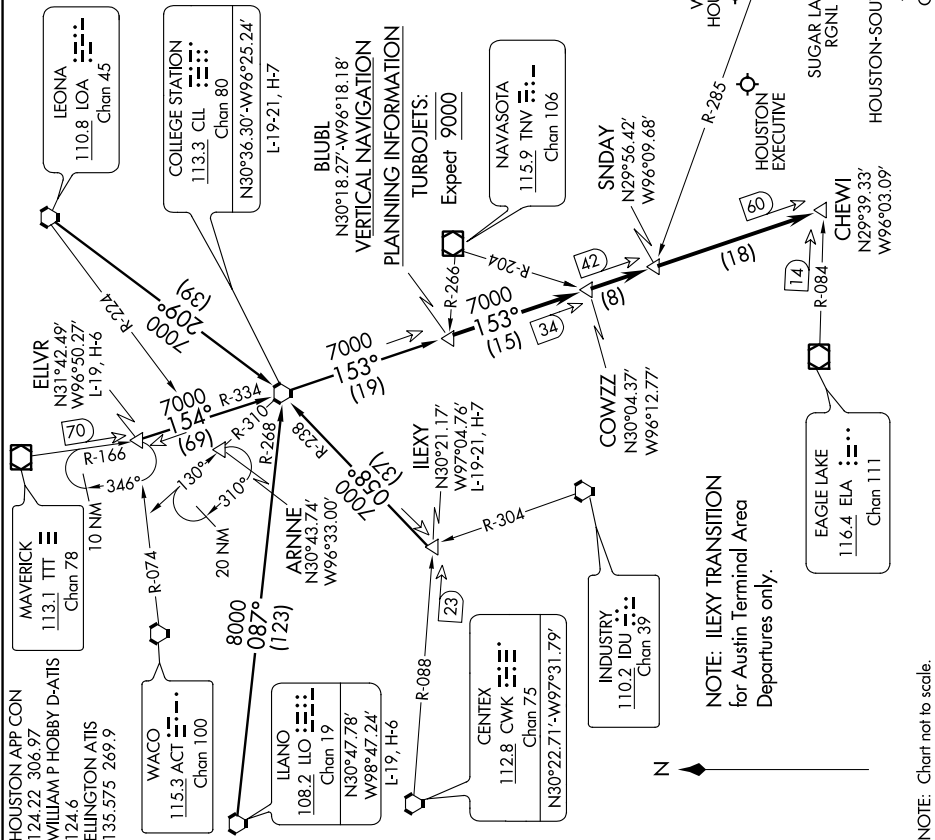
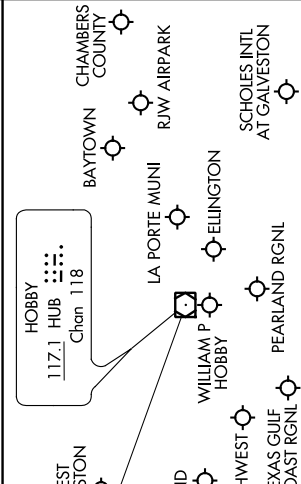
**COLLEGE STATION TRANSITION (CLL.BLUBL3):** From over CLL VORTAC on CLL R-153 to BLUBL INT. Thence . . . .

**LEONA TRANSITION (LOA.BLUBL3):** From over LOA VORTAC on R-209 to CLL VORTAC, then on CLL R-153 to BLUBL INT. Thence . . . .

**IILEXY TRANSITION (IILEXY.BLUBL3):** From over IILEXY INT via CLL R-238 to CLL VORTAC, then on CLL R-153 to BLUBL INT. Thence . . . .

**LLANO TRANSITION (LLO.BLUBL3):** From over LLO VORTAC on LLO R-087 via CLL R-268 to CLL VORTAC, then on CLL R-153 to BLUBL INT. Thence . . . .

From over BLUBL INT on CLL R-153 to COWZZ INT, to SNDAY INT, to CHEWI INT. Expect vectors to final approach course at or prior to CHEWI INT.



**NOTE: IILEXY TRANSITION**  
for Auslin Terminal Area  
Departures only.

NOTE: Chart not to scale.

# BLUBELL THREE ARRIVAL

(BLUBL.BLUBL3) 29MAY14

HOUSTON, TEXAS

SC-5, 31 JAN 2019 to 28 FEB 2019