

LOC F-MDT 110.9	APP CRS 128°	Rwy Idg 8070 TDZE 308 Apt Elev 310
---------------------------	------------------------	--

ILS or LOC RWY 13

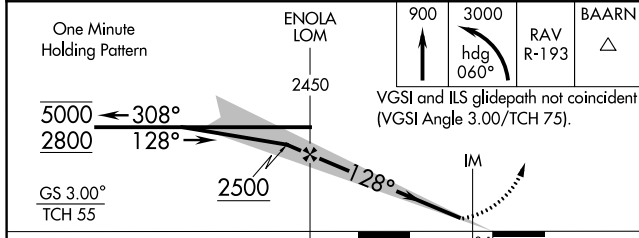
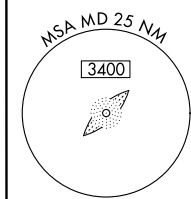
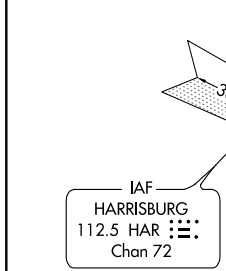
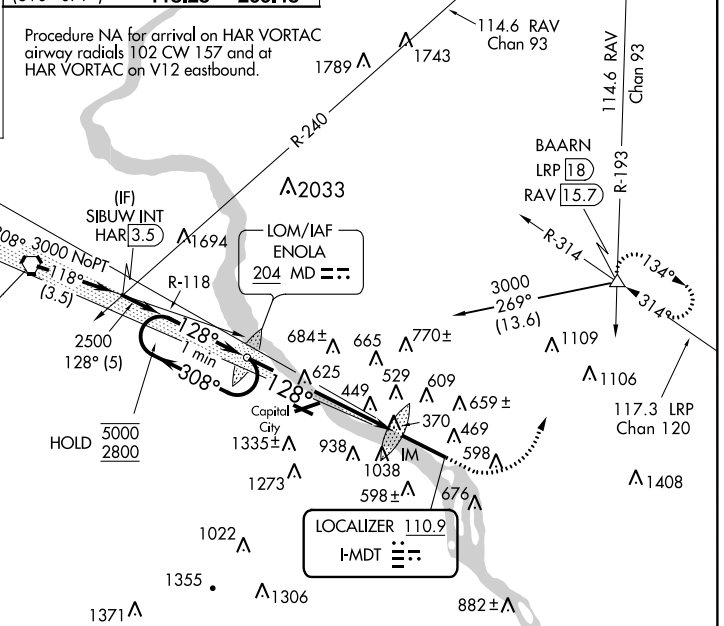
HARRISBURG INTL (MDT)

ALSF-2

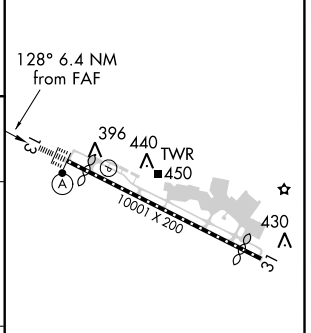
 MISSED APPROACH: Climb to 900 then climbing left turn to 3000 on heading 060° and RAV VORTAC R-193 to BAARN INT/LRP 18 DME and hold.

ATIS 118.8	HARRISBURG APP CON (080°-179°) 126.45 281.525 (180°-309°) 124.1 273.525 (310°-079°) 118.25 269.45	HARRISBURG INTL TOWER 124.8 269.35	GND CON 121.7 348.6
----------------------	---	--	-------------------------------

ALTERNATE MISSED APCH FIX
 HARRISBURG HAR 112.5
 112.5 Chan 72



ELEV 310	D	TDZE 308
----------	----------	----------



CATEGORY	A	B	C	D
S-ILS 13	508/18		200 (200-½)	
S-LOC 13	900/24	592 (600-½)	900-1¼	592 (600-1¼)
CIRCLING	900-1	590 (600-1)	940-1¾ 630 (700-1¾)	1000-2 690 (700-2)

TDZ/CL Rwy 13					
REIL Rwy 31					
HIRL Rwy 13-31					
FAF to MAP 6.4 NM					
Knots	60	90	120	150	180
Min:Sec	6:24	4:16	3:12	2:34	2:08

NE-4, 31 JAN 2019 to 28 FEB 2019

NE-4, 31 JAN 2019 to 28 FEB 2019