

QUAKER SEVEN DEPARTURE

D-ATIS 128.55
 CLNC DEL 121.75
 GND CON
 121.9 348.6
 GREENSBORO TOWER
 119.1 290.325
 GREENSBORO DEP CON
 124.35 269.225 (250°-049°)
 126.6 327.075 (050°-249°)

LYNCHBURG
 109.2 LYH
 Chan 29
 N37°15.27' - W79°14.18'
 L-26-36, H-10-12

RICHMOND
 114.1 RIC
 Chan 88
 L-34-36, H-10-12

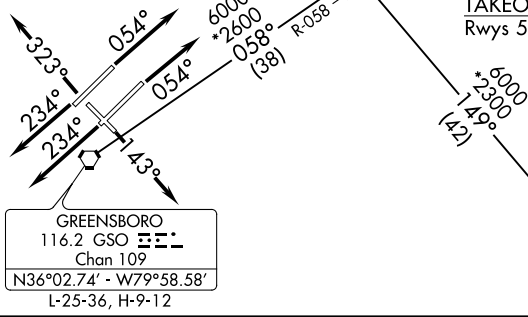
SOUTH BOSTON
 110.4 SBV
 Chan 41
 N36°40.50' - W79°00.87'
 L-26-36, H-12

ROANOKE
 109.4 ROA
 Chan 31
 N37° 20.61'
 W80° 04.22'
 L-26, H-10-12

**TOP ALTITUDE:
 ASSIGNED BY ATC**

NOTE: RADAR required.
 NOTE: RICHMOND TRANSITION requires DME.

TAKEOFF MINIMUMS
 Rwy's 5L, 5R, 12, 14, 23L, 23R, 32: Standard.



GREENSBORO
 116.2 GSO
 Chan 109
 N36°02.74' - W79°58.58'
 L-25-36, H-9-12

RALEIGH-DURHAM
 117.2 RDU
 Chan 119
 N35°52.35' - W78°47.00'
 L-36, H-9-12

NOTE: Chart not to scale.

DEPARTURE ROUTE DESCRIPTION

TAKEOFF RWYS 5L/R: Climb heading 054°, thence. . . .
TAKEOFF RWY 14: Climb heading 143°, thence. . . .
TAKEOFF RWYS 23L/R: Climb heading 234°, thence. . . .
TAKEOFF RWY 32: Climb heading 323°, thence. . . .
 . . . maintain altitude assigned by ATC. RADAR vectors will be provided to intercept assigned radial associated with the issued transition, or if no transition assigned, RADAR vectors will be provided to the appropriate fix. Expect requested altitude/flight level 10 minutes after departure.

LYNCHBURG TRANSITION (QUAK7.LYH): From over GSO VORTAC on GSO R-058 to JEANY INT then on LYH R-191 to LYH VOR/DME.
RALEIGH/DURHAM TRANSITION (QUAK7.RDU): From over GSO VORTAC on GSO R-058 to JEANY INT then on RDU R-329 to RDU VORTAC.
RICHMOND TRANSITION (QUAK7.RIC): From over GSO VORTAC on GSO R-058 to JEANY INT then on GSO R-058 and RIC R-246 to RIC VOR/DME.
ROANOKE TRANSITION (QUAK7.ROA): From over GSO VORTAC on GSO R-058 to JEANY INT then on ROA R-152 to ROA VOR/DME.
SOUTH BOSTON TRANSITION (QUAK7.SBV): From over GSO VORTAC on GSO R-058 to JEANY INT then on SBV R-229 to SBV VORTAC.

SE-2, 31 JAN 2019 to 28 FEB 2019

SE-2, 31 JAN 2019 to 28 FEB 2019