

VOR/DME GRI <b>112.0</b> Chan 57	APP CRS <b>313°</b>	Rwy Idg TDZE Apt Elev <b>6608</b> <b>1844</b> <b>1847</b>
--	------------------------	--

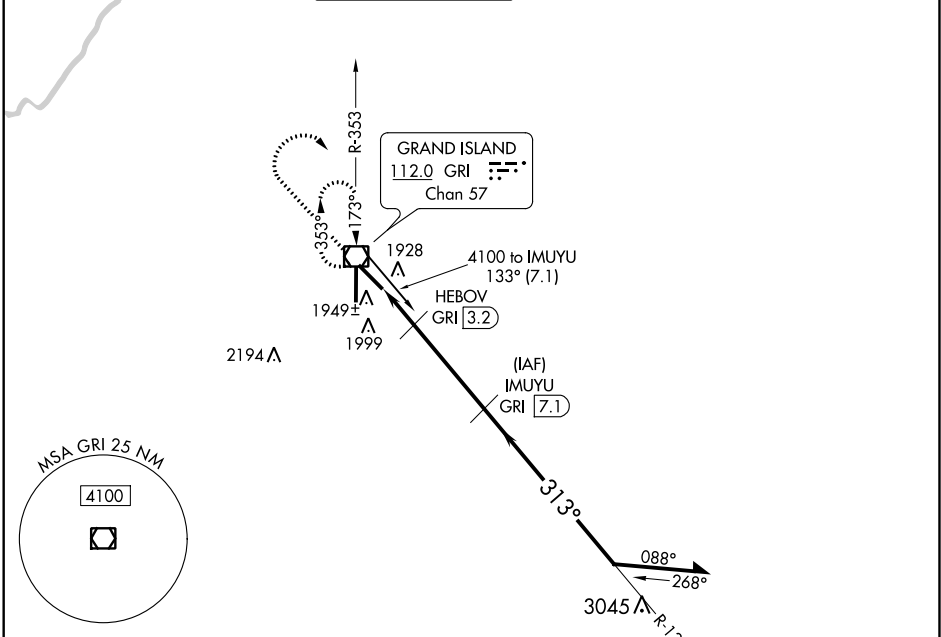
# VOR/DME RWY 31

CENTRAL NEBRASKA RGNL (GRI)

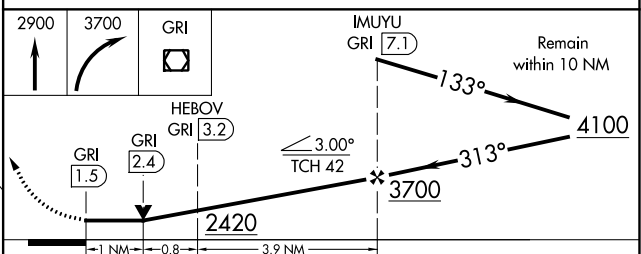
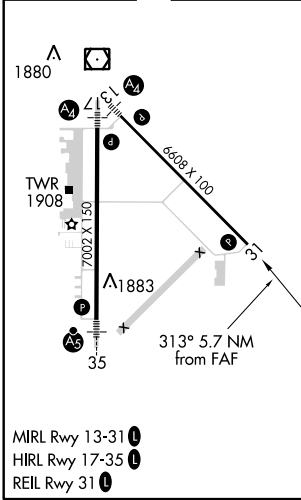
**⚠** If local altimeter setting not received, use Aurora altimeter setting and increase all MDAs 60 feet.  
**⚠** VDP NA when using Aurora altimeter setting.

MISSED APPROACH: Climb to 2900 then climbing right turn to 3700 direct GRI VOR/DME and hold.

ATIS <b>127.4</b>	MINNEAPOLIS CENTER <b>119.4 278.8</b>	GRAND ISLAND TOWER* <b>118.2 (CTAF) 259.3</b>	GND CON <b>121.9 259.3</b>	CLNC DEL <b>121.9</b> <b>126.05</b> (when tower closed)	UNICOM <b>122.95</b>
----------------------	--	--	-------------------------------	---	-------------------------



ELEV 1847	<b>D</b>	TDZE 1844
-----------	----------	-----------



CATEGORY	A	B	C	D
S-31	2200-1	356 (400-1)	2200-1½ 356 (400-1½)	2400-2 553 (600-2)
CIRCLING	2300-1	453 (500-1)	2300-1½ 453 (500-1½)	2400-2 553 (600-2)

NC-2, 31 JAN 2019 to 28 FEB 2019

NC-2, 31 JAN 2019 to 28 FEB 2019