


VOR/DME GRI <b>112.0</b> Chan <b>57</b>	APP CRS <b>173°</b>	Rwy Idg TDZE Apt Elev	<b>7002</b> <b>1844</b> <b>1847</b>
---	------------------------	-----------------------------	---

# VOR RWY 17

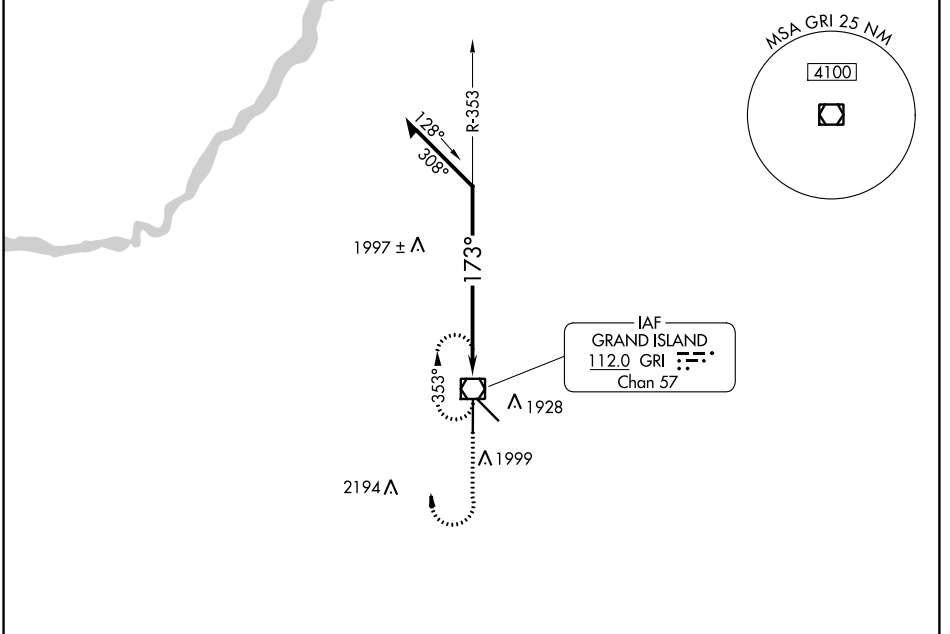
CENTRAL NEBRASKA RGNL (GRI)

When local altimeter setting not received, use Aurora altimeter setting and increase all MDA 60 feet, and increase S-17 Cat C and D visibility ¼ mile. Inop table does not apply to S-17 Cat C.

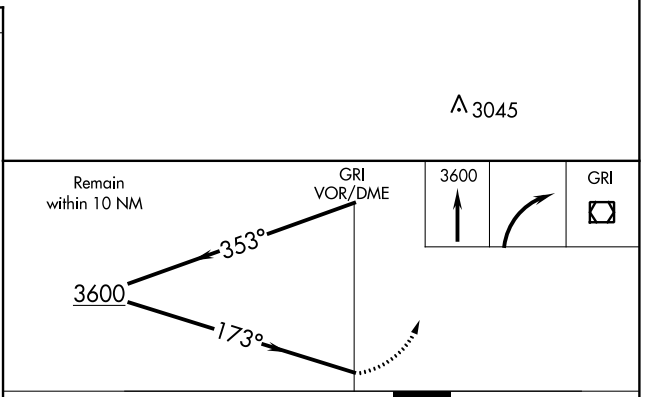
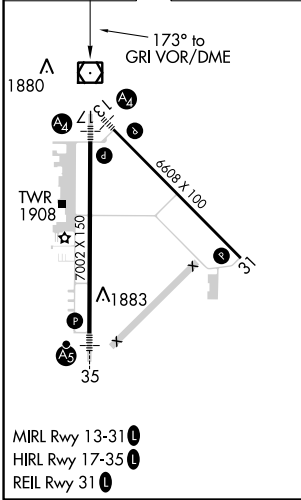
MALS 

MISSED APPROACH: Climb to 3600, then right turn direct GRI VOR/DME and hold.

ATIS <b>127.4</b>	MINNEAPOLIS CENTER <b>119.4 278.8</b>	GRAND ISLAND TOWER* <b>118.2 (CTAF) 259.3</b>	GND CON <b>121.9 259.3</b>	CLNC DEL <b>121.9</b> <b>126.05</b> (when tower closed)	UNICOM <b>122.95</b>
----------------------	--	--	-------------------------------	---	-------------------------



ELEV 1847	D	TDZE 1844
-----------	---	-----------



CATEGORY	A	B	C	D
S-17	2300-¾ 456 (500-¾)	456 (500-¾)	2300-¼ 456 (500-¼)	2300-½ 456 (500-½)
CIRCLING	2300-1 453 (500-1)	453 (500-1)	2300-½ 453 (500-½)	2400-2 553 (600-2)

NC-2, 31 JAN 2019 to 28 FEB 2019

NC-2, 31 JAN 2019 to 28 FEB 2019