

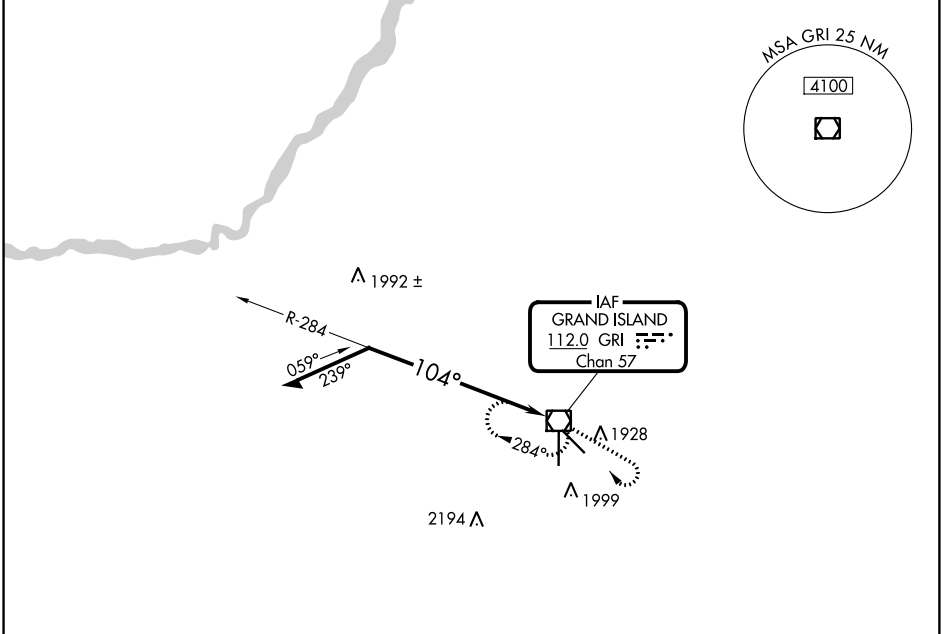
VOR/DME GRI <b>112.0</b> Chan 57	APP CRS <b>104°</b>	Rwy Idg 6608 TDZE <b>1842</b> Apt Elev <b>1847</b>
--	------------------------	---

**VOR RWY 13**  
CENTRAL NEBRASKA RGNL (GRI)

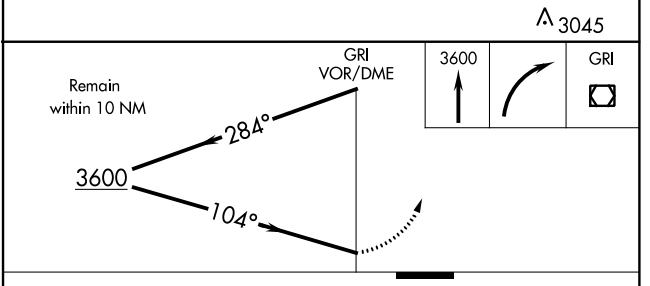
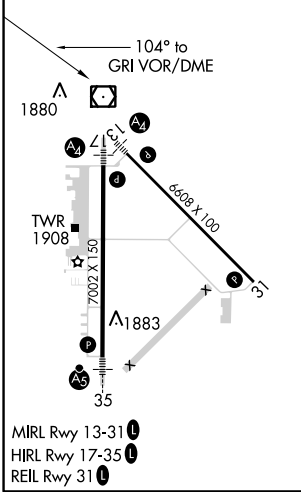
When local altimeter setting not received, use Aurora altimeter setting and increase all MDA 60 feet, and increase S-13 Cat C and D visibility 1/4 mile. Inop table does not apply to S-13 Cat C.

MALS MISSED APPROACH: Climb to 3600, then right turn direct GRI VOR/DME and hold.

ATIS <b>127.4</b>	MINNEAPOLIS CENTER <b>119.4 278.8</b>	GRAND ISLAND TOWER* <b>118.2 (CTAF) 0 259.3</b>	GND CON <b>121.9 259.3</b>	CLNC DEL <b>121.9</b> <b>126.05</b> (when tower closed)	UNICOM <b>122.95</b>
----------------------	--	--	-------------------------------	---	-------------------------



ELEV 1847	<b>D</b>	TDZE 1842
-----------	----------	-----------



CATEGORY	A	B	C	D
S-13	2300-3/4 458 (500-3/4)	2300-1/4 458 (500-1/4)	2300-1/2 458 (500-1/2)	2300-1 458 (500-1)
CIRCLING	2300-1 453 (500-1)	2300-1/2 453 (500-1/2)	2400-2 553 (600-2)	

NC-2, 31 JAN 2019 to 28 FEB 2019

NC-2, 31 JAN 2019 to 28 FEB 2019