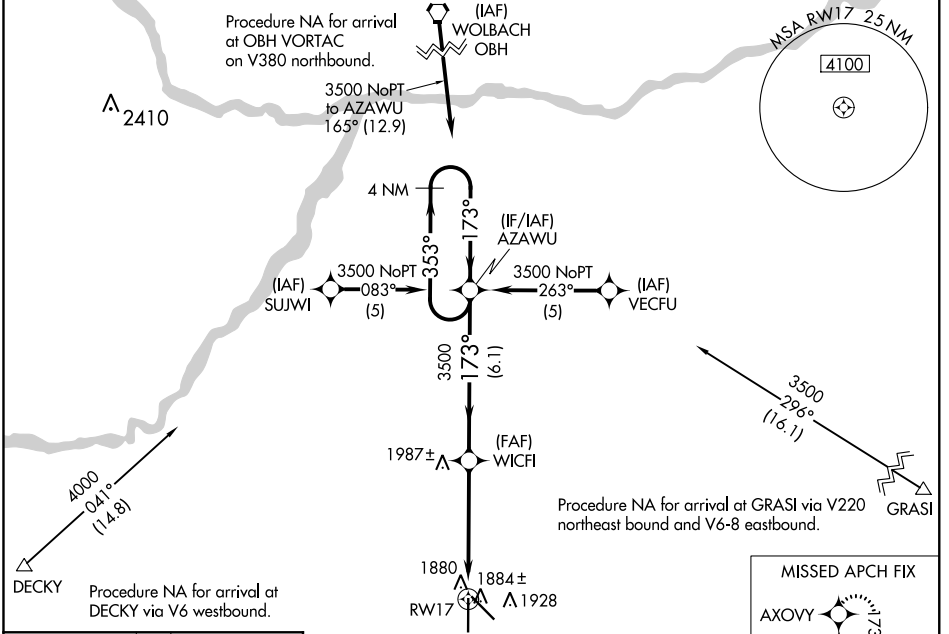


WAAS CH <b>60999</b> <b>W17A</b>	APP CRS <b>173°</b>	Rwy Idg <b>7002</b> TDZE <b>1844</b> Apt Elev <b>1847</b>
--	------------------------	---

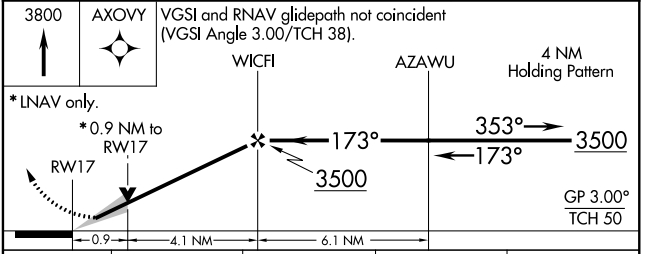
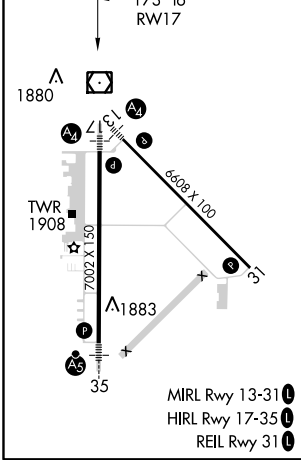
# RNAV (GPS) RWY 17

CENTRAL NEBRASKA RGNL (GRI)

<p><b>⚠</b> DME/DME RNP-0.3 NA. Baro-VNAV NA below -18°C (0°F). If local altimeter setting not received, use Aurora altimeter setting and increase all DAs/MDAs 60 feet. Baro-VNAV and VDP NA when using Aurora altimeter setting. Inoperative table does not apply to LPV.</p>		<p>MALS </p> <p>MISSED APPROACH: Climb to 3800 direct AXOVY and hold.</p>			
ATIS <b>127.4</b>	MINNEAPOLIS CENTER <b>119.4 278.8</b>	GRAND ISLAND TOWER* <b>118.2 (CTAF) 0 259.3</b>	GND CON <b>121.9 259.3</b>	CLNC DEL <b>121.9</b> (when tower closed)	UNICOM <b>122.95</b>



ELEV <b>1847</b>	<b>D</b>	TDZE <b>1844</b>
------------------	----------	------------------



CATEGORY	A	B	C	D
LPV DA	2094-3/4 250 (300-3/4)			
LNAV/VNAV DA	2138-3/4 294 (300-3/4)			2138-1 294 (300-1)
LNAV MDA	2160-3/4 316 (400-3/4)		2160-1 316 (400-1)	2400-2 553 (600-2)
CIRCLING	2300-1	453 (500-1)	2300-1 1/2 453 (500-1 1/2)	2400-2 553 (600-2)

NC-2, 31 JAN 2019 to 28 FEB 2019

NC-2, 31 JAN 2019 to 28 FEB 2019