

WAAS CH <b>69424</b> <b>W23A</b>	APP CRS <b>231°</b>	Rwy Idg TDZE <b>16</b> Apt Elev <b>17</b>	<b>6007</b>
--	------------------------	---	-------------

# RNAV (GPS) RWY 23

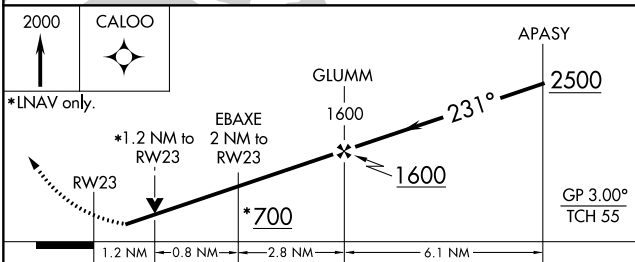
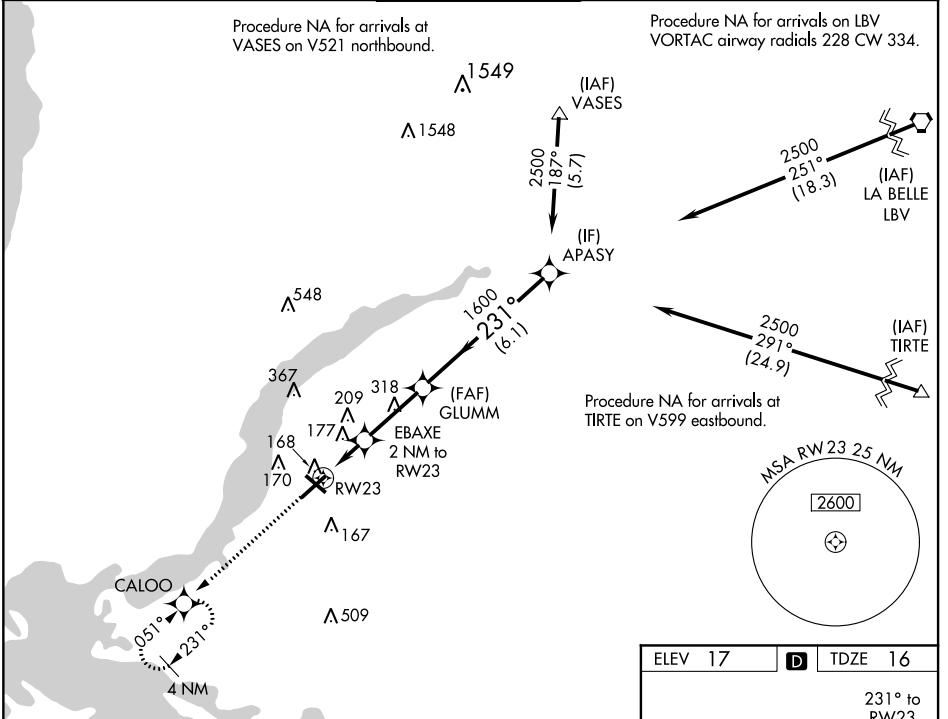
PAGE FIELD (FMY)

RNP APCH

▼ Circling Rwy 31 NA at night. For uncompensated Baro-VNAV systems, LNAV/VNAV NA below -15°C (5°F) or above 54°C (130°F). Rwy 23 helicopter visibility reduction below 3/4 SM NA.

MISSED APPROACH: Climb to 2000 direct CALOO and hold.

ATIS <b>123.725</b>	FORT MYERS APP CON ★ <b>126.8 306.2</b>	PAGE TOWER ★ <b>119.0 (CTAF) 306.95</b>	GND CON <b>121.7</b>	CLNC DEL <b>121.7</b>
------------------------	--	--	-------------------------	--------------------------



ELEV 17	D	TDZE 16
---------	---	---------

231° to RW23

TWR 100

6400 X 150

4972 X 150

REIL Rwy 5 and 23 ①

MIRL 5-23 ①

MIRL 13-31

REIL Rwy 13 and 31

SE-3, 31 JAN 2019 to 28 FEB 2019

SE-3, 31 JAN 2019 to 28 FEB 2019