

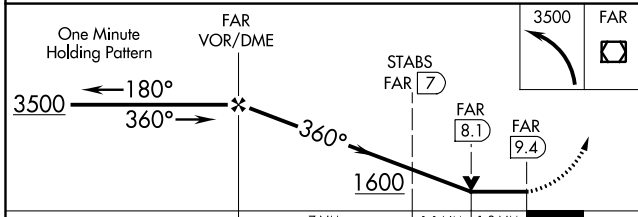
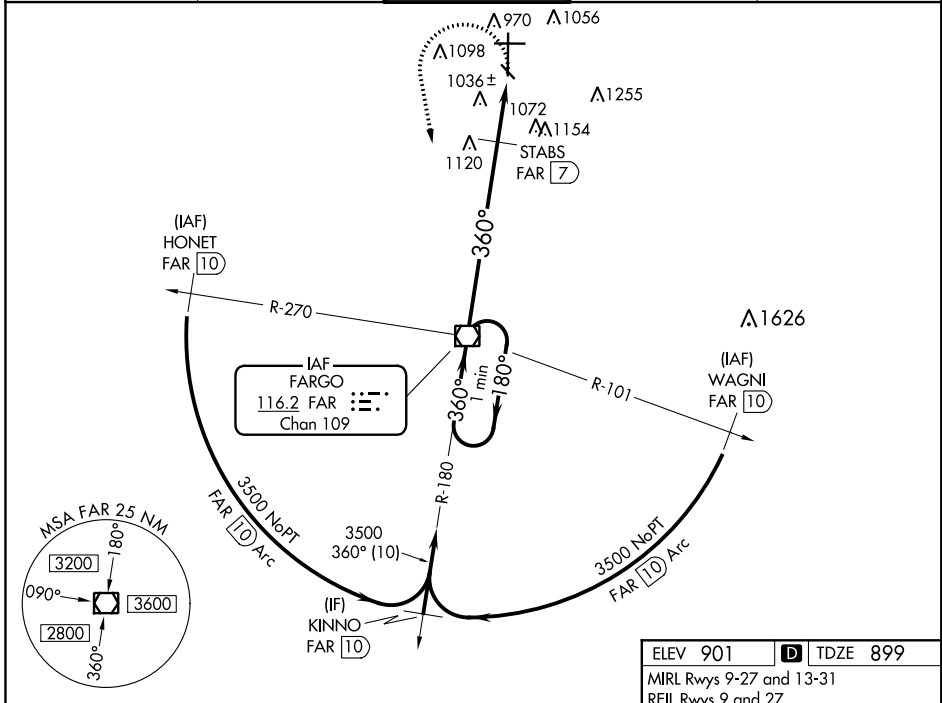
VOR/DME FAR	APP CRS	Rwy Idg	9001
116.2	360°	TDZE	899
Chan 109		Apt Elev	901

VOR RWY 36

HECTOR INTL (FAR)

 	For inop MALSRS, increase S-36 Cat E visibility to 2½ miles. STABS fix minimums: For inop MALSRS, increase S-36 Cat E visibility to 1¾ mile.		MISSED APPROACH: Climbing left turn to 3500 direct FAR VOR/DME and hold.
	-25°C		

ATIS 124.5 379.2	FARGO APP CON 120.4 377.15	FARGO TOWER 133.8 290.4	GND CON 121.9 348.6	CLNC DEL 121.9 348.6
----------------------------	--------------------------------------	--	-------------------------------	--------------------------------



ELEV 901 TDZE 899

MRL Rwy 9-27 and 13-31
REIL Rwy 9 and 27
HIRL Rwy 18-36 81

360° 9.4 NM from FAF

FACILITY	60	90	120	150	180
Knots	60	90	120	150	180
Min:Sec	9:24	6:16	4:42	3:46	3:08

FAR TO MAP 9.4 NM

CATEGORY	A	B	C	D	E
S-36	1600/24	701 (700-½)	1600-1½ 701 (700-1½)	1600-1¾ 701 (700-1¾)	1600-2 701 (700-2)
CIRCLING	1600-1	699 (700-1)	1600-2 699 (700-2)	1620-2¼ 719 (700-2¼)	1620-2½ 719 (700-2½)
STABS FIX MINIMUMS					
S-36	1380/24	481 (500-½)	1380/40 481 (500-¾)	1380/50 481 (500-1)	1380/60 481 (500-1¼)
CIRCLING	1380-1	479 (500-1)	1520-1¾ 619 (700-1¾)	1620-2¼ 719 (800-2¼)	1620-2½ 719 (800-2½)

NC-1, 31 JAN 2019 to 28 FEB 2019

NC-1, 31 JAN 2019 to 28 FEB 2019