

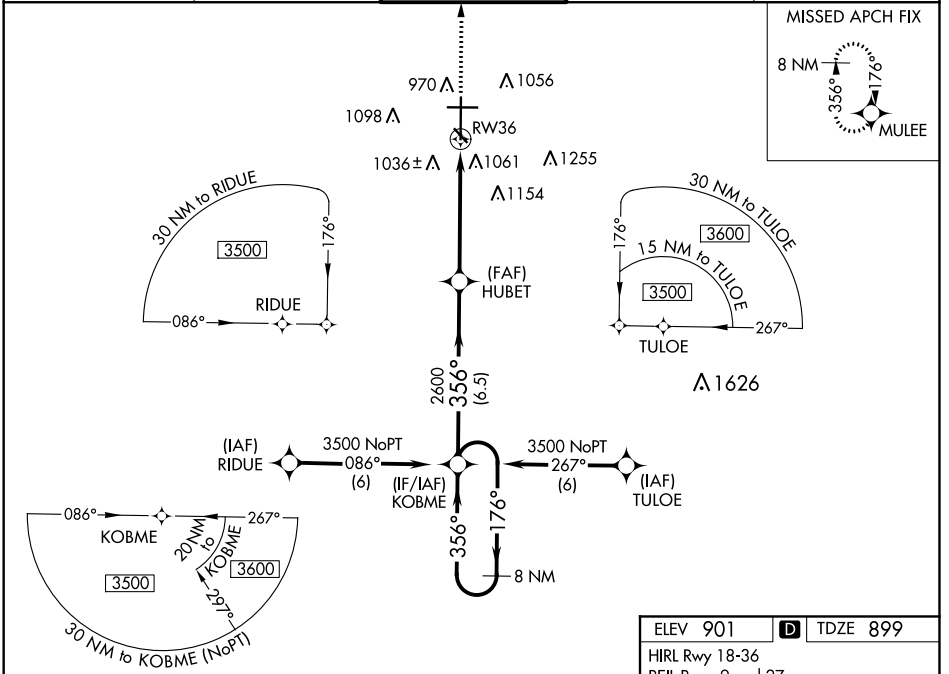
WAAS CH 50106 W36A	APP CRS 356°	Rwy Idg 9001 TDZE 899 Apt Elev 901
--	------------------------	---

RNAV (GPS) RWY 36

HECTOR INTL (F.A.R.)

RNP APCH.	MALSR	MISSED APPROACH: Climb to 3500 direct MULEE and hold.
<p>Baro-VNAV NA below -16°C (4°F). For inoperative MALSR, increase LPV Cat E visibility to RVR 4000, and increase LNAV/VNAV and LNAV Cat E visibility to 1¼ mile.</p> <p>-25°C</p>		

ATIS 124.5 379.2	FARGO APP CON 120.4 377.15	FARGO TOWER 133.8 290.4	GND CON 121.9 348.6	CLNC DEL 121.9 348.6
----------------------------	--------------------------------------	-----------------------------------	-------------------------------	--------------------------------



NC-1, 31 JAN 2019 to 28 FEB 2019

NC-1, 31 JAN 2019 to 28 FEB 2019

<p>VGSI and RNAV glidepath not coincident (VGSI Angle 3.00/TCH 71).</p> <p>8 NM Holding Pattern</p> <p>3500 ← 176° / → 356°</p> <p>GP 3.00° TCH 55</p>		<p>3500 MULEE</p> <p>*1.4 NM to RW36</p> <p>*LNAV only.</p>			
<p>8 NM Holding Pattern</p> <p>3500 ← 176° / → 356°</p> <p>GP 3.00° TCH 55</p>		<p>3500 MULEE</p> <p>*1.4 NM to RW36</p> <p>*LNAV only.</p>			
CATEGORY	A	B	C	D	E
LPV DA	1150/24		251 (300-½)		
LNAV/VNAV DA	1360/50		461 (500-1)	1360/60 461 (500-1¼)	
LNAV MDA	1420/24	521 (600-½)	1420/50 521 (600-1)	1420/60	521 (600-1¼)
CIRCLING	1420-1	519 (600-1)	1520-1¾ 619 (700-1¾)	1620-2¼ 719 (800-2¼)	1620-2½ 719 (800-2½)