

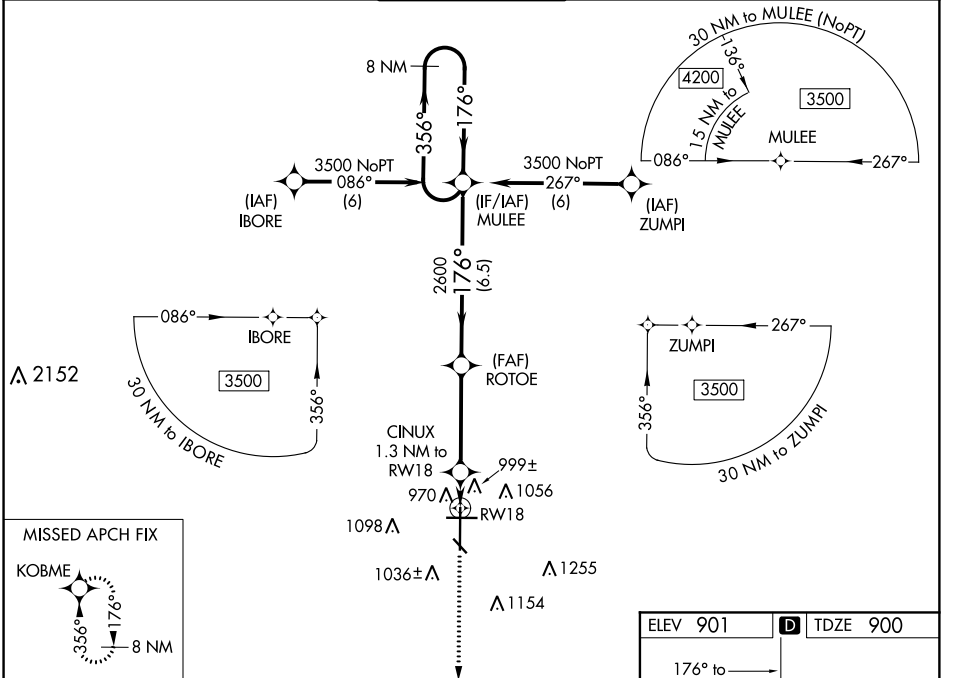
WAAS CH 40006 W18A	APP CRS 176°	Rwy Idg TDZE Apt Elev	9001 900 901
--	------------------------	-----------------------------	---

RNAV (GPS) RWY 18

HECTOR INTL (FAR)

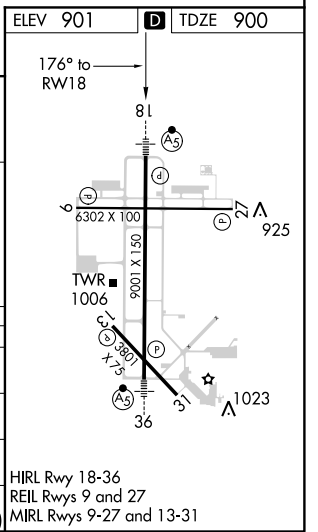
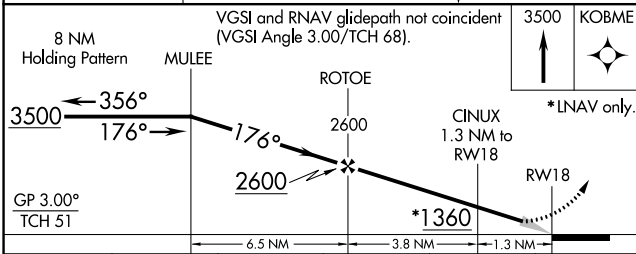
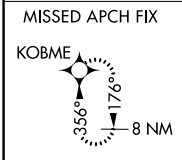
RNP APCH.		MALSR	MISSED APPROACH: Climb to 3500 direct KOBME and hold.
For inoperative MALSR, increase LPV Cat E visibility to RVR 4000 and LNAV/VNAV Cat E and LNAV Cat D and E to RVR 6000. For uncompensated Baro-VNAV systems, LNAV/VNAV NA below -16°C (4°F) or above 47°C (116°F). #RVR 1800 authorized with use of FD or AP or HUD to DA.			

ATIS 124.5 379.2	FARGO APP CON 120.4 377.15	FARGO TOWER 133.8 290.4	GND CON 121.9 348.6	CLNC DEL 121.9 348.6
----------------------------	--------------------------------------	-----------------------------------	-------------------------------	--------------------------------



NC-1, 31 JAN 2019 to 28 FEB 2019

NC-1, 31 JAN 2019 to 28 FEB 2019



CATEGORY	A	B	C	D	E
LPV DA#		1100/24	200 (200-½)		
LNAV/VNAV DA		1272/40	372 (400-¾)		
LNAV MDA	1260/24	360 (400-½)		1260/50	360 (400-1)
CIRCLING	1380-1	479 (500-1)	1520-1¾ 619 (700-1¾)	1620-2¼ 719 (800-2¼)	1620-2½ 719 (700-2½)