

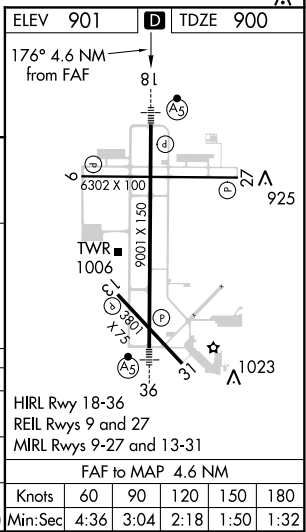
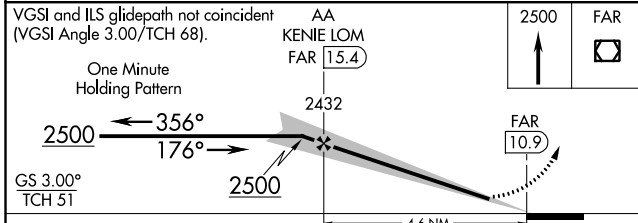
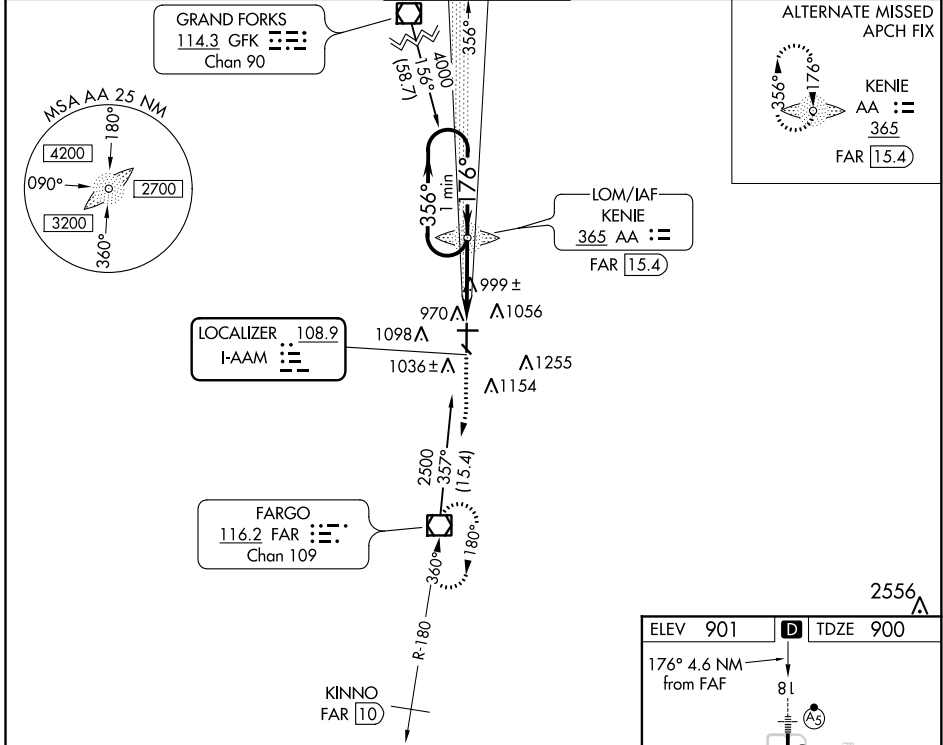
LOC I-AAM <b>108.9</b>	APP CRS <b>176°</b>	Rwy Idg TDZE Apt Elev	<b>9001</b> <b>900</b> <b>901</b>
---------------------------	------------------------	-----------------------------	---

# ILS or LOC RWY 18

HECTOR INTL (FAR)

ADF or DME required for procedure entry.		MALSRL	MISSED APPROACH: Climb to 2500 direct FAR VOR/DME and hold.
For inop MALSRL, increase S-ILS 18 Cat E visibility to RVR 4000, and S-LOC 18 Cat E visibility to RVR 5000. * Visibility Cat A/B/C/D RVR 1800 authorized with the use of FD or AP or HUD to DA.			

ATIS <b>124.5 379.2</b>	FARGO APP CON <b>120.4 377.15</b>	FARGO TOWER <b>133.8 290.4</b>	GND CON <b>121.9 348.6</b>	CLNC DEL <b>121.9 348.6</b>
----------------------------	--------------------------------------	-----------------------------------	-------------------------------	--------------------------------



CATEGORY	A	B	C	D	E
S-ILS 18*	1100/24 200 (200-½)				
S-LOC 18	1260/24	360 (400-½)		1260/40	360 (400-¾)
CIRCLING	1380-1	479 (500-1)	1520-1¾ 619 (700-1¾)	1620-2¼ 719 (800-2¼)	1620-2½ 719 (800-2½)

NC-1, 31 JAN 2019 to 28 FEB 2019

NC-1, 31 JAN 2019 to 28 FEB 2019