

VORTAC DLH 112.6 Chan 73	APP CRS 197°	Rwy ldg TDZE Apt Elev 5719 1420 1428
---------------------------------------	------------------------	--

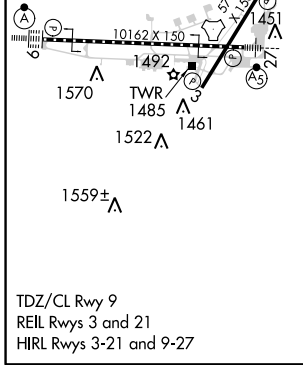
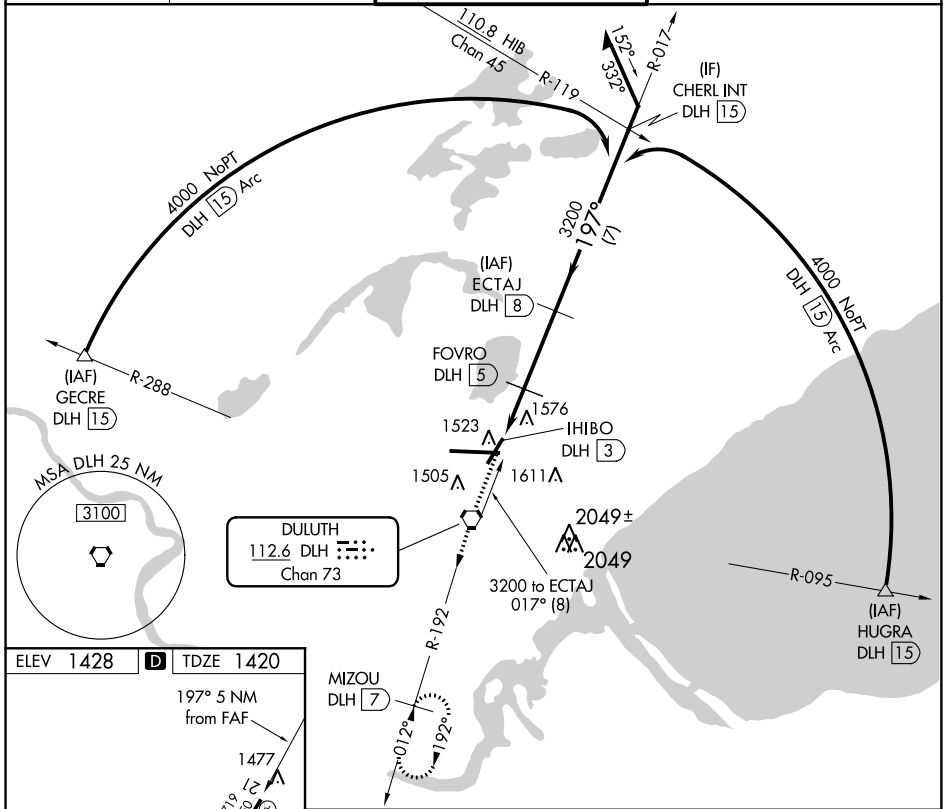
VOR/DME or TACAN RWY 21

DULUTH INTL (DLH)

⚠ Circling NA for Cat E southeast of Rwy 3-27.
⚠ Visibility reduction by helicopters NA.
ASR Rwy 21 Straight-in and Circling minimums NA at night.

MISSED APPROACH: Climb to 3800 direct DLH VORTAC then on DLH VORTAC R-192 to MIZOU/DLH 7 DME and hold.

ATIS 124.1 270.1	DULUTH APP CON 125.45 233.7	DULUTH TOWER 118.3 257.8	GND CON 121.9 348.6
----------------------------	---------------------------------------	------------------------------------	-------------------------------



ELEV 1428	D TDZE 1420	197° 5 NM from FAF				
3800	DLH	DLH R-192	MIZOU DLH 7	ECTAJ DLH 8		
VGSI and descent angles not coincident (VGSI Angle 3.00/TCH 37). Remain within 15 NM						
IHIBO DLH 3		FOVRO DLH 5		017°		
2100		≤ 3.29° TCH 45		197°		
2100		3200		3200		
2 NM		3 NM				
CATEGORY	A	B	C	D	E	
S-21	1860-1	440 (500-1)	1860-1⅓	440 (500-1⅓)		
C CIRCLING	1880-1 452 (500-1)	1900-1 472 (500-1)	1940-1½ 512 (600-1½)	2400-3	972 (1000-3)	

NC-1, 31 JAN 2019 to 28 FEB 2019

NC-1, 31 JAN 2019 to 28 FEB 2019