

WAAS CH <b>82314</b> <b>W03A</b>	APP CRS <b>033°</b>	Rwy Idg TDZE <b>1420</b> Apt Elev <b>1428</b>
--	------------------------	---

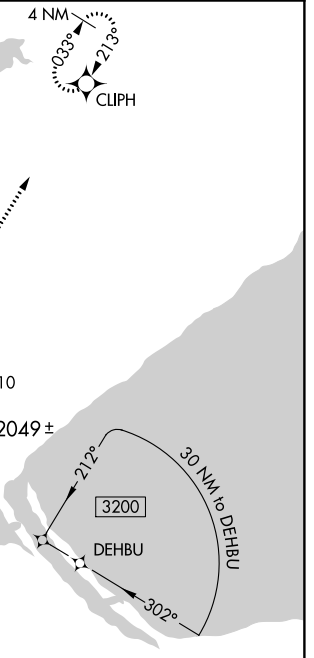
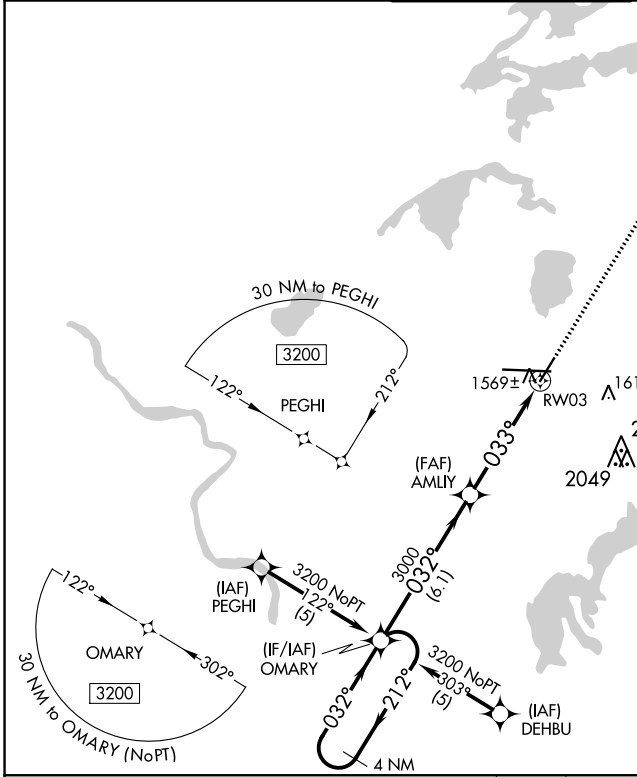
# RNAV (GPS) RWY 3

DULUTH INTL (DLH)

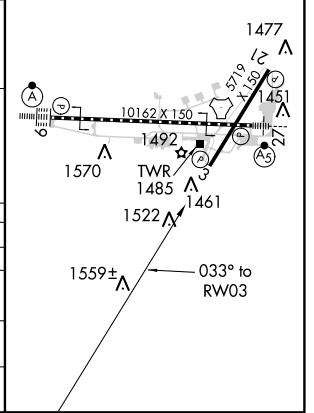
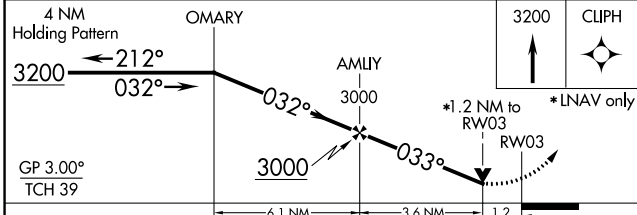
**ASR** For uncompensated Baro-VNAV systems, LNAV/VNAV NA below -17°C (2°F) or above 46°C (115°F). DME/DME RNP-0.3 NA. Rwy 3 helicopter visibility reduction below ¼ SM NA.

MISSED APPROACH: Climb to 3200 direct CLIPH and hold.

ATIS <b>124.1 270.1</b>	DULUTH APP CON <b>125.45 233.7</b>	DULUTH TOWER <b>118.3 257.8</b>	GND CON <b>121.9 348.6</b>
----------------------------	---------------------------------------	------------------------------------	-------------------------------



ELEV 1428	<b>D</b> TDZE 1420
TDZ/CL Rwy 9	
REIL Rwy 3 and 21	
HIRL Rwy 3-21 and 9-27	



CATEGORY	A	B	C	D
LPV DA		1824-1½	404 (400-1½)	
LNAV/ VNAV DA		1874-1¾	454 (500-1¾)	
LNAV MDA		1820-1 400 (400-1)		1820-1¼ 400 (400-1¼)
<b>C</b> CIRCLING	1880-1 452 (500-1)	1900-1 472 (500-1)	1940-1½ 512 (600-1½)	2400-3 972 (1000-3)

NC-1, 31 JAN 2019 to 28 FEB 2019

NC-1, 31 JAN 2019 to 28 FEB 2019