

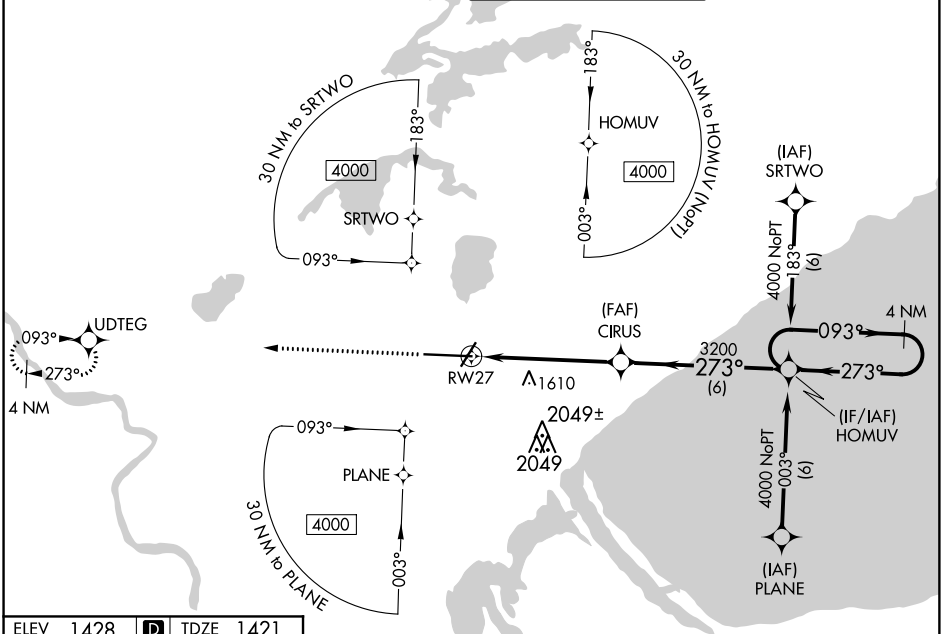
WAAS CH <b>50502</b> <b>W27A</b>	APP CRS <b>273°</b>	Rwy Idg <b>10162</b> TDZE <b>1421</b> Apt Elev <b>1428</b>
--	------------------------	--

# RNAV (GPS) RWY 27

DULUTH INTL (DLH)

	For uncompensated Baro-VNAV systems, LNAV/VNAV NA below -17°C (2°F) or above 46°C (115°F). DME/DME RNP-0.3 NA. For Inop ALS, increase LPV Cat E visibility to RVR 4000, LNAV/VNAV Cat E visibility to RVR 6000 and LNAV Cat E visibility to 1 3/4 SM. Circling NA for Cat E southeast of Rwy 3/27.	MALSR 	MISSED APPROACH: Climb to 3300 direct UDTEG and hold.
--	--	-----------	---

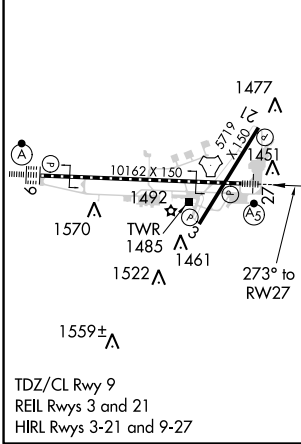
ATIS <b>124.1 270.1</b>	DULUTH APP CON <b>125.45 233.7</b>	DULUTH TOWER <b>118.3 257.8</b>	GND CON <b>121.9 348.6</b>
----------------------------	---------------------------------------	------------------------------------	-------------------------------



NC-1, 31 JAN 2019 to 28 FEB 2019

NC-1, 31 JAN 2019 to 28 FEB 2019

ELEV 1428	<b>D</b>	TDZE 1421
-----------	----------	-----------



3300 UDTEG 	VGSI and RNAV glidepath not coincident (VGSI Angle 3.00/TCH 96).	HOMUV 4 NM Holding Pattern
*LNAV only 	*1.2 NM to RWY 27	CIRUS 3200 273°
	RWY 27	4000 093° / 273°
GP 3.00° TCH 50		6 NM

CATEGORY	A	B	C	D	E
LPV DA	1671/24 250 (300-1/2)				
LNAV/VNAV DA	1746/40 325 (400-3/4)				
LNAV MDA	1900/24	479 (500-1/2)	1900/40 479 (500-3/4)	1900/50 479 (500-1)	1900/60 479 (500-1 1/4)
<b>C</b> CIRCLING	1900-1	472 (500-1)	1940-1 1/2 512 (600-1 1/2)	2400-3	972 (1000-3)