

LOC I-DLH 110.3	APP CRS 093°	Rwy Idg 10162 TDZE 1428 Apt Elev 1428
---------------------------	------------------------	--

ILS or LOC RWY 9

DULUTH INTL (DLH)

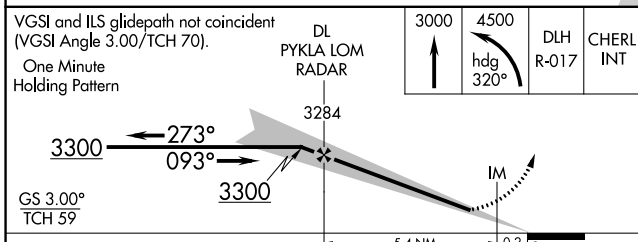
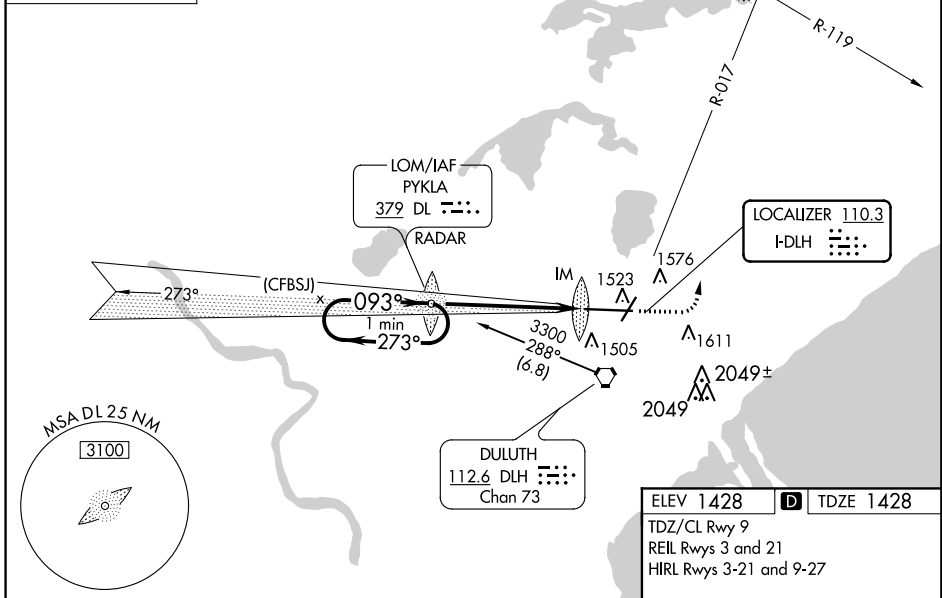
<p>⚠ Circling NA for Cat E southeast of Rwy 3-27. ADF or RADAR required. For inop ALS, increase S-ILS 9 Cat E visibility to RVR 4000 and S-LOC 9 Cat C/D/E visibility to 1½ SM.</p>	<p>ALSF-2</p>	<p>MISSED APPROACH: Climb to 3000 then climbing left turn to 4500 on heading 320° and on DLH VORTAC R-017 to CHERL INT/DLH 15 DME and hold.</p>
--	---------------	---

<p>ATIS 124.1 270.1</p>	<p>DULUTH APP CON 125.45 233.7</p>	<p>DULUTH TOWER 118.3 257.8</p>	<p>GND CON 121.9 348.6</p>
------------------------------------	---	--	---------------------------------------

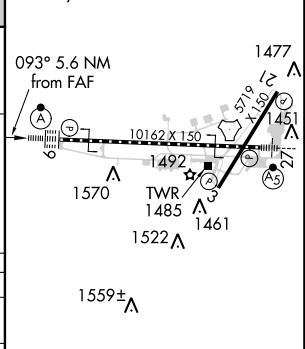
ALTERNATE MISSED APCH FIX

PYKLA
DL ---
379
RADAR

ADF or RADAR REQUIRED



ELEV 1428	D TDZE 1428
TDZ/CL Rwy 9	
REIL Rws 3 and 21	
HIRL Rws 3-21 and 9-27	



CATEGORY	A	B	C	D	E
S-ILS 9	1628/18 200 (200-½)				
S-LOC 9	1960/24	532 (600-½)	1960/55	532 (600-1)	
C CIRCLING	1960-1	532 (600-1)	1960-1½	532 (600-1½)	2400-3 972 (1000-3)

FAF to MAP 5.6 NM					
Knots	60	90	120	150	180
Min:Sec	5:36	3:44	2:48	2:14	1:52

NC-1, 31 JAN 2019 to 28 FEB 2019

NC-1, 31 JAN 2019 to 28 FEB 2019