

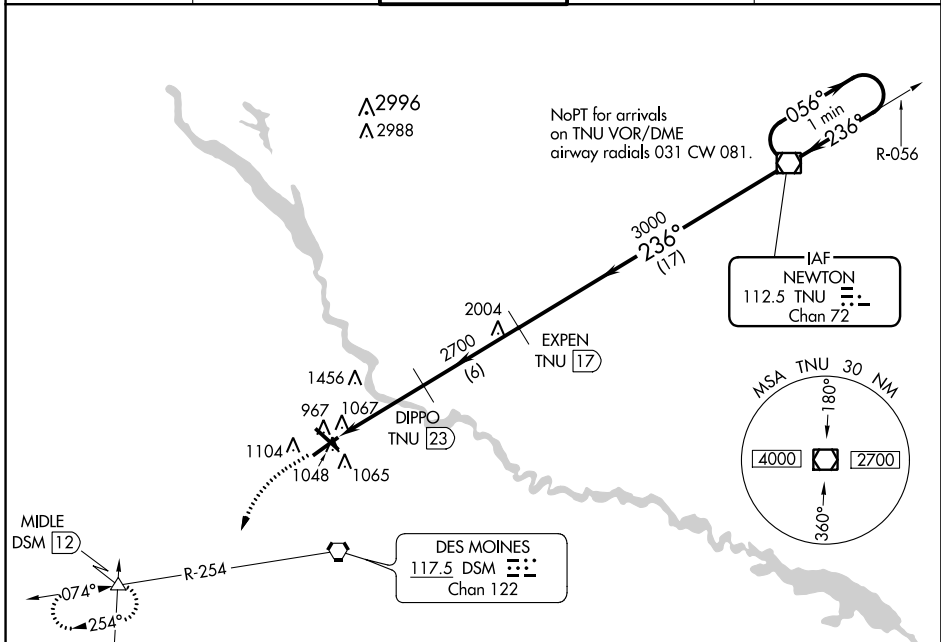
VOR/DME TNU <b>112.5</b> Chan <b>72</b>	APP CRS <b>236°</b>	Rwy Idg TDZE Apt Elev	<b>9003</b> <b>939</b> <b>957</b>
---	------------------------	-----------------------------	---

# VOR/DME RWY 23

DES MOINES INTL (DSM)

**▼** When VGSI inoperative, procedure NA at night.  
**▲** MISSED APPROACH: Climb to 2000, then climbing left turn to 3000 via heading 200° and DSM VORTAC R-254 to MIDDLE Int/DSM 12 DME and hold.

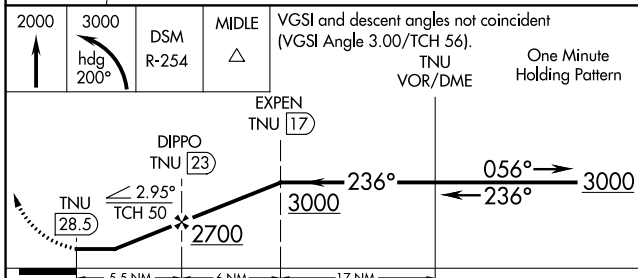
ATIS <b>119.55 251.05</b>	DES MOINES APP CON <b>123.9 307.15</b>	DES MOINES TOWER <b>118.3 257.8</b>	GND CON <b>121.9 348.6</b>	CLNC DEL <b>134.15 317.55</b>
------------------------------	---	--	-------------------------------	----------------------------------



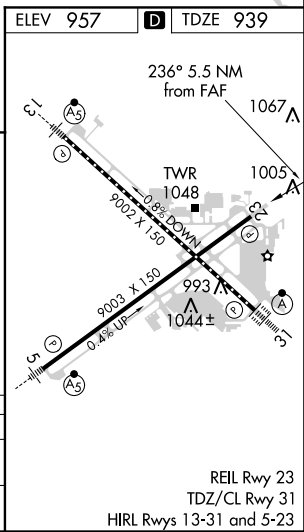
NC-3, 31 JAN 2019 to 28 FEB 2019

NC-3, 31 JAN 2019 to 28 FEB 2019

2000	3000	DSM R-254	MIDDLE	VGSI and descent angles not coincident (VGSI Angle 3.00/TCH 56). TNU VOR/DME	One Minute Holding Pattern
------	------	-----------	--------	---	----------------------------



CATEGORY	A	B	C	D
S-23	1720-1 781 (800-1)	1720-1 1/4 781 (800-1 1/4)	1720-2 1/4 781 (800-2 1/4)	1720-2 1/2 781 (800-2 1/2)
CIRCLING	1720-1 763 (800-1)	1720-1 1/4 763 (800-1 1/4)	1720-2 1/4 763 (800-2 1/4)	1720-2 1/2 763 (800-2 1/2)



REIL Rwy 23  
TDZ/CL Rwy 31  
HIRL Rws 13-31 and 5-23