

LOC/DME I-DSM 110.3 Chan 40	APP CRS 311°	Rwy Idg TDZE Apt Elev	9001 958 958
--	------------------------	-----------------------------	---

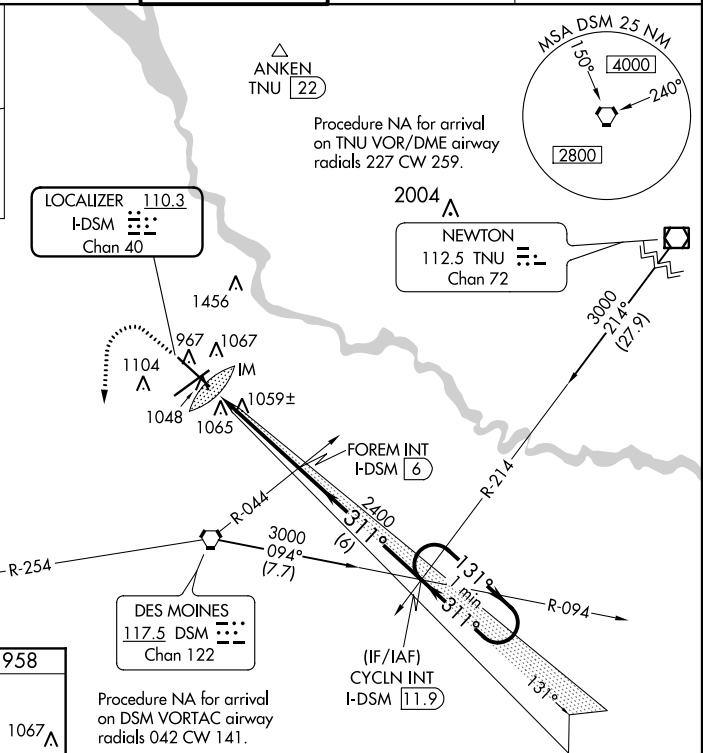
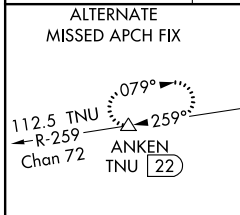
ILS or LOC RWY 31

DES MOINES INTL (DSM)

▲ For inop ALS, increase S-ILS 31 Cat E visibility to RVR 4000 and S-LOC 31 Cat E visibility to RVR 6000.

ALSF-2
MISSED APPROACH: Climb to 1600 then climbing left turn to 3000 on heading 180° on DSM VORTAC R-254 to MIDDLE INT/12 DME and hold.

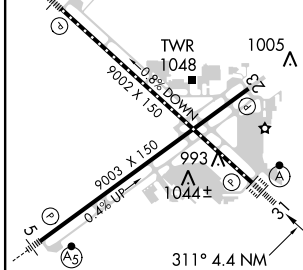
ATIS 119.55 251.05	DES MOINES APP CON 123.9 307.15	DES MOINES TOWER 118.3 257.8	GND CON 121.9 348.6	CLNC DEL 134.15 317.55
------------------------------	---	--	-------------------------------	----------------------------------



NC-3, 31 JAN 2019 to 28 FEB 2019

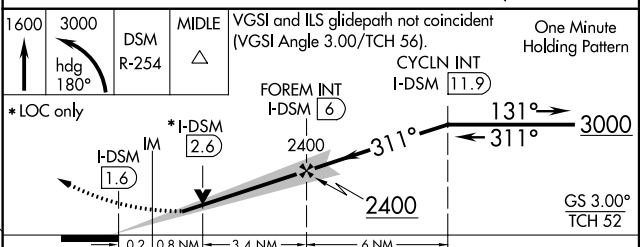
NC-3, 31 JAN 2019 to 28 FEB 2019

ELEV 958	D	TDZE 958
----------	----------	----------



REIL Rwy 23
TDZ/CL Rwy 31
HIRL Rws 13-31 and 5-23
FAF to MAP 4.4 NM

Knots	60	90	120	150	180
Min:Sec	4:24	2:56	2:12	1:46	1:28



CATEGORY	A	B	C	D	E
S-ILS 31	1158/18 200 (200-½)				
S-LOC 31	1340/24 382 (400-½)	1340/35 382 (400-¾)			
C CIRCLING	1420-1 462 (500-1)	1600-1½ 1760-2½	1760-2½ 802 (900-2½)	1760-2¾ 802 (900-2¾)	