

# RNAV (RNP) Y RWY 24R

JAMES M COX DAYTON INTL (DAY)

APP CRS	Rwy Idg	<b>10900</b>
<b>241°</b>	TDZE	<b>997</b>
	Apf Elev	<b>1009</b>

RNP AR APCH.

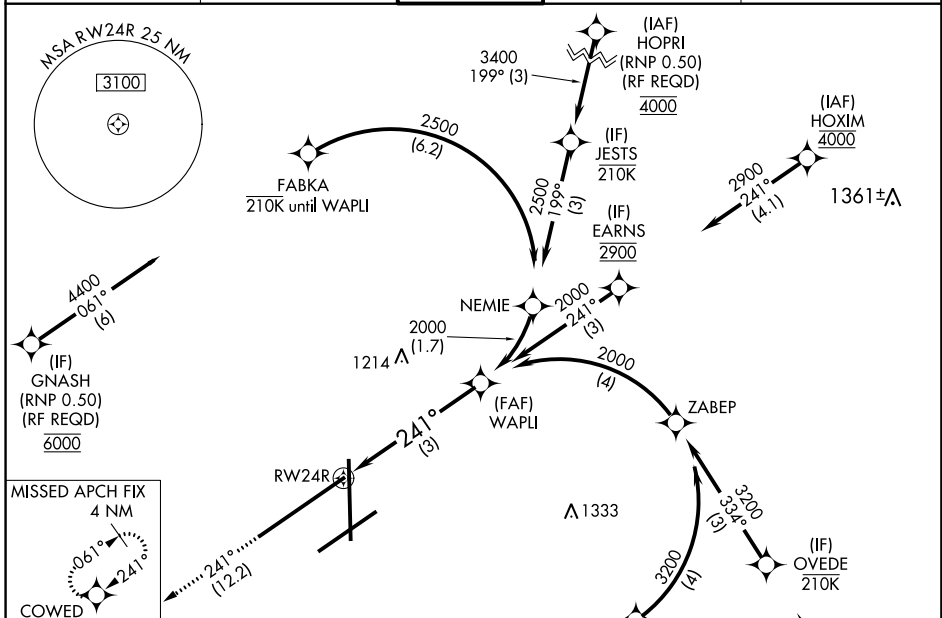
For inop ALS, increase RNP 0.10 all Cats visibility to RVR 5500 and RNP 0.30 all Cats visibility to 1 3/8 SM. For uncompensated Baro-VNAV systems, procedure NA below -19°C or above 54°C.

MALSR

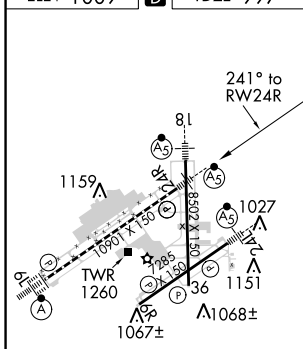


MISSED APPROACH: Climb to 3000 on track 241° COWED and hold.

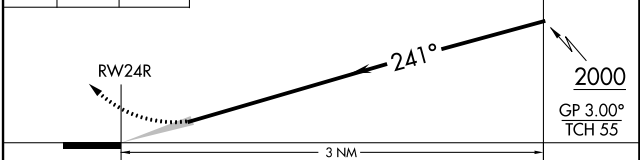
ATIS <b>125.8</b>	COLUMBUS APP CON <b>118.425 323.15</b>	DAYTON TOWER <b>119.9 257.7</b>	GND CON <b>121.9</b>	CLNC DEL <b>121.75</b>
----------------------	---	------------------------------------	-------------------------	---------------------------



ELEV 1009	<b>D</b>	TDZE 997
-----------	----------	----------



3000	↑	tr	241°	COWED	See planview for multiple IF locations.	WAPLI	2000
------	---	----	------	-------	---	-------	------



CATEGORY	A	B	C	D
RNP 0.10 DA		1334/35	337 (400-5%)	
RNP 0.30 DA		1418/50	421 (500-1)	

**AUTHORIZATION REQUIRED**

EC-2, 31 JAN 2019 to 28 FEB 2019

EC-2, 31 JAN 2019 to 28 FEB 2019