

WAAS CH 90414 W06B	APP CRS 061°	Rwy Idg TDZE Apt Elev	7001 1009 1009
--	------------------------	-----------------------------	---

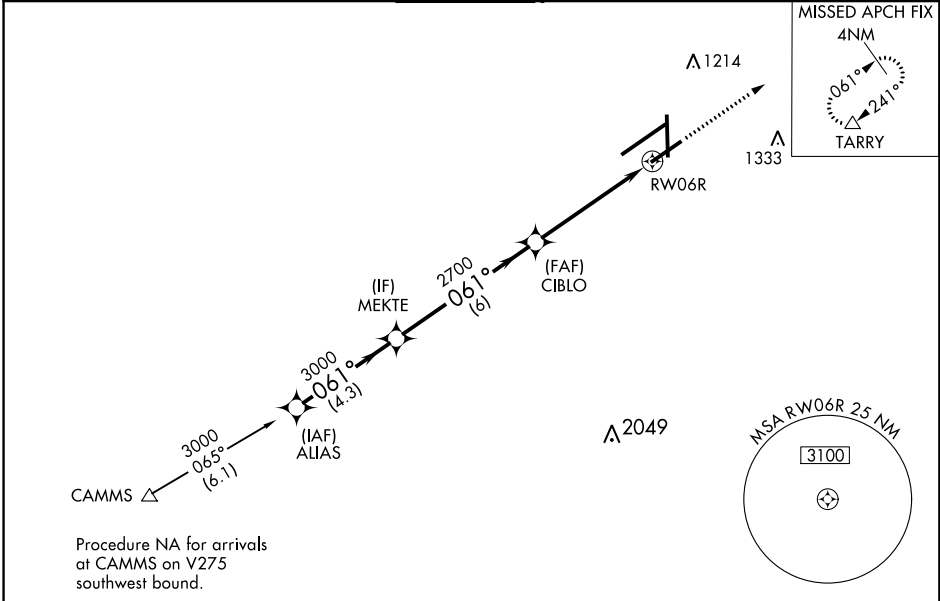
RNAV (GPS) RWY 6R

JAMES M COX DAYTON INTL (DAY)

For uncompensated Baro-VNAV systems, LNAV/VNAV NA below -19°C (-4°F) or above 54°C (130°F). Rwy 6R helicopter visibility reduction below 3/4 SM NA. Simultaneous approach authorized. DME/DME RNP-0.3 NA. LNAV procedure NA during simultaneous operations. Use of FD or AP required during simultaneous operations.

MISSED APPROACH: Climb to 3000 direct TARRY and hold.

ATIS 125.8	COLUMBUS APP CON 118.425 323.15	DAYTON TOWER 119.9 257.7	GND CON 121.9	CLNC DEL 121.75
----------------------	---	------------------------------------	-------------------------	---------------------------



EC-2, 31 JAN 2019 to 28 FEB 2019

EC-2, 31 JAN 2019 to 28 FEB 2019

VGSI and RNAV glidepath not coincident (VGSI Angle 3.00/TCH 50).		3000	TARRY
ALIAS	MEKTE	CIBLO	RWY06R
3000	3000	2700	
GP 3.00°			
TCH 53			
	4.3 NM	6 NM	3.6 NM
CATEGORY	A	B	C
LPV DA		1259-3/4	250 (300-3/4)
LNAV/VNAV DA		1496-13/4	487 (500-13/4)
LNAV MDA	1520-1	511 (600-1)	1520-1 1/2
CIRCLING	1580-1	571 (600-1)	1580-1 1/2
			631 (700-2)

