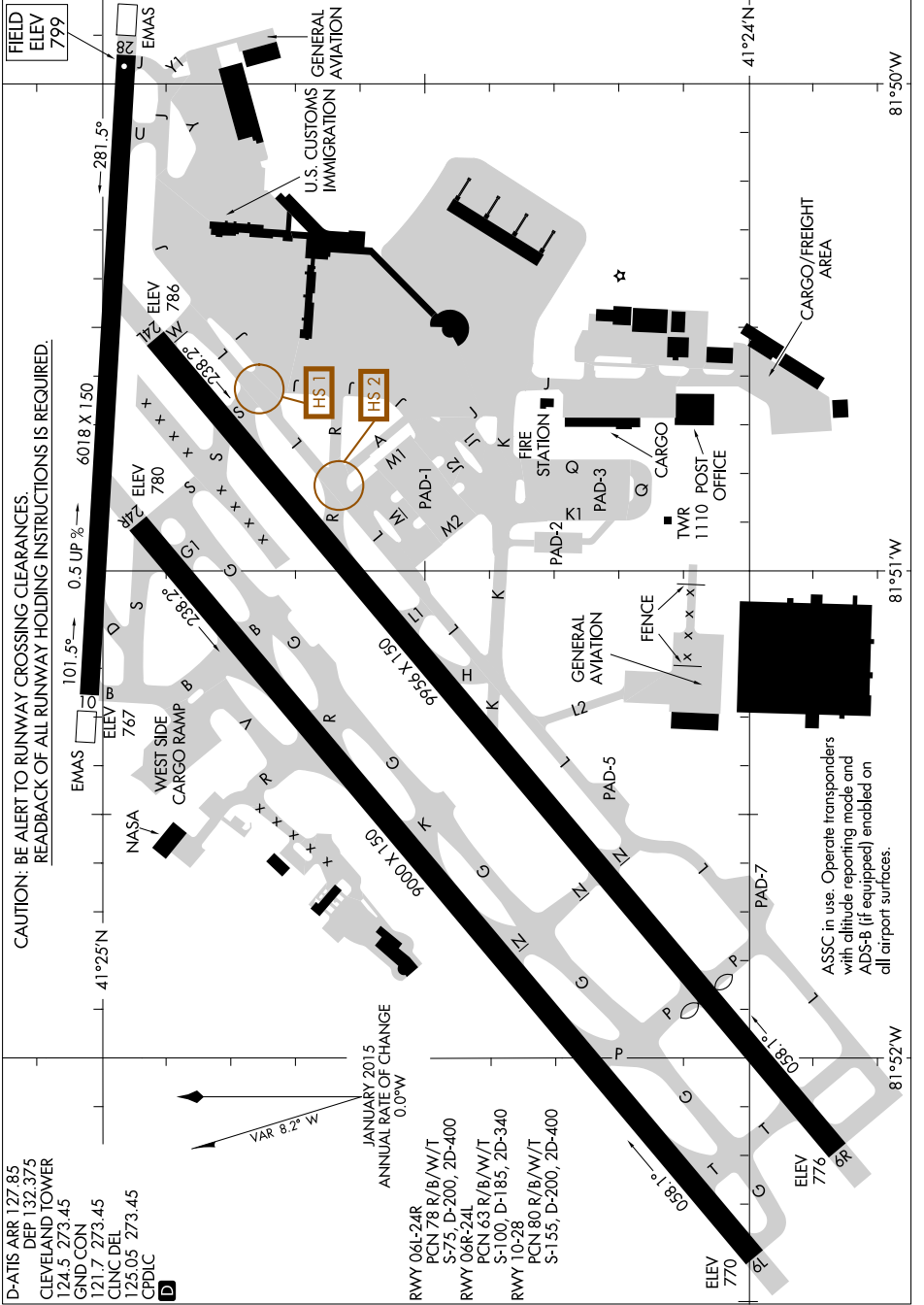


AI-84 (FAA)

EC-2, 31 JAN 2019 to 28 FEB 2019



CAUTION: BE ALERT TO RUNWAY CROSSING CLEARANCES. READBACK OF ALL RUNWAY HOLDING INSTRUCTIONS IS REQUIRED.

D-ATIS ARR 127.85
 DEP 132.375
 CLEVELAND TOWER
 124.5 273.45
 GND CON 121.7 273.45
 CINC DEL 125.05 273.45
 CPDLC

VAR 8.2° W
 JANUARY 2015
 ANNUAL RATE OF CHANGE
 0.0°/W

RWY 06L-24R
 PCN 78 R/B/W/T
 S-75, D-200, 2D-400
 RWY 06R-24L
 PCN 63 R/B/W/T
 S-100, D-185, 2D-340
 RWY 180 R/B/W/T
 PCN 80 R/B/W/T
 S-135, D-200, 2D-400

ASSC in use. Operate transponders with altitude reporting mode and ADS-B (if equipped) enabled on all airport surfaces.

EC-2, 31 JAN 2019 to 28 FEB 2019