

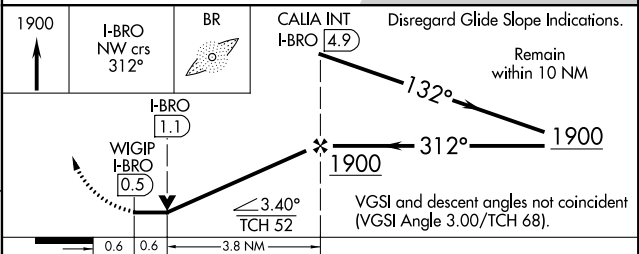
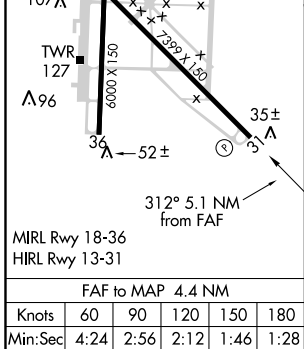
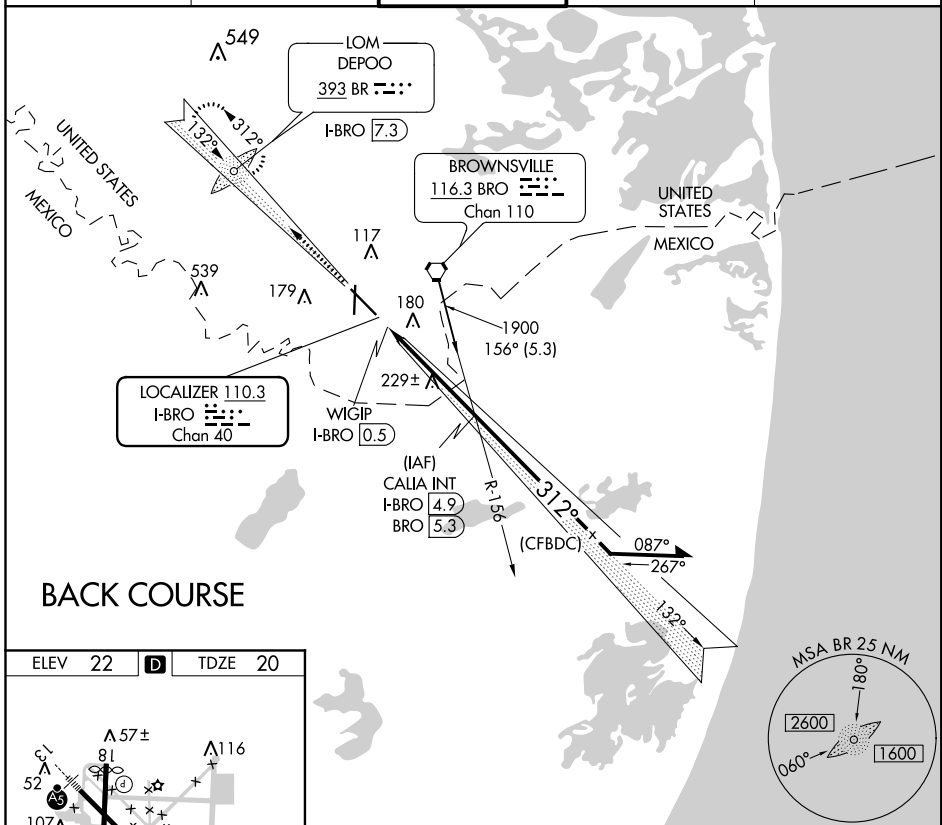
LOC/DME I-BRO 110.3 Chan 40	APP CRS 312°	Rwy Idg 7399 TDZE 20 Apt Elev 22
---	------------------------	---

LOC BC RWY 31
BROWNSVILLE/SOUTH PADRE ISLAND INTL (BRO)

⚠ Helicopter visibility reduction below ¼ SM NA. When local altimeter setting not received, use Port Isabel altimeter setting and increase all MDA 40 ft; increase Circling Cat D visibility ¼ mile. Circling to Rwy 18 NA at night. ADF or DME required. VDP NA when using Port Isabel altimeter setting.

⚠ MISSED APPROACH: Climb to 1900 on I-BRO localizer NW course (312°) to DEPOO LOM/I-BRO 7.3 DME and hold.

ATIS 128.55	VALLEY APP CON 119.5 257.6	BROWNSVILLE TOWER* 118.9 (CTAF) 0 239.3	GND CON 121.9	UNICOM 122.95
-----------------------	--------------------------------------	---	-------------------------	-------------------------



FAF to MAP 4.4 NM	CATEGORY	A	B	C	D
Knots 60 90 120 150 180	5-31	480-1	460 (500-1)	480-1 460 (500-1)	460 (500-1)
Min:Sec 4:24 2:56 2:12 1:46 1:28	CIRCLING	480-1	540-1	540-1 518 (600-1)	680-2
		458 (500-1)	518 (600-1)	518 (600-1)	658 (700-2)

SC-3, 31 JAN 2019 to 28 FEB 2019

SC-3, 31 JAN 2019 to 28 FEB 2019