

LOC/DME I-BRO 110.3 Chan 40	APP CRS 132°	Rwy Idg 7399 TDZE 19 Apt Elev 22
--	------------------------	---

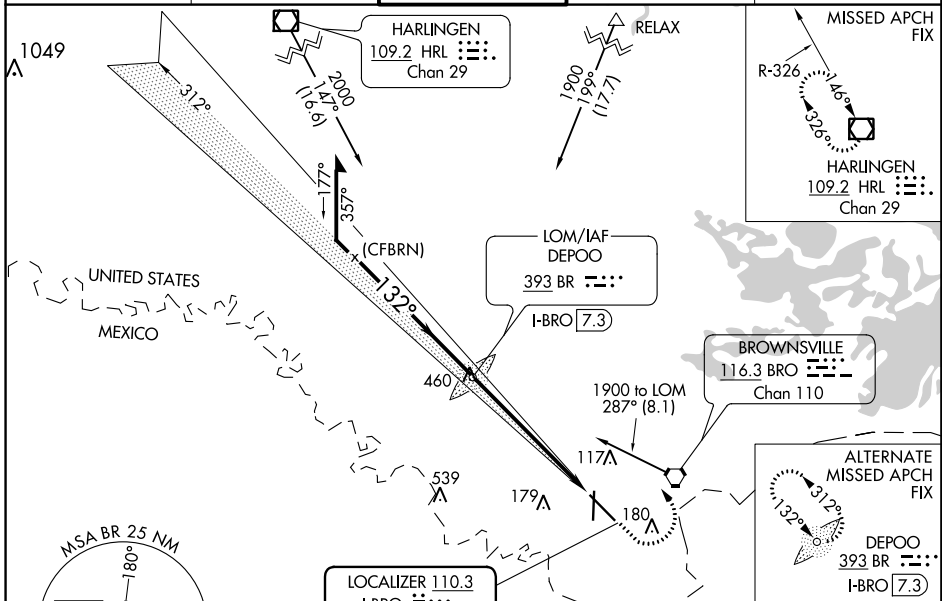
ILS or LOC RWY 13

BROWNSVILLE/SOUTH PADRE ISLAND INTL (B.R.O)

⚠ Circling to Rwy 18 NA at night. When local altimeter setting not received, use Port Isabel altimeter setting and increase DA to 257 feet and all MDA 40 feet and S-LOC 13 Cat C and D visibility to RVR 5500, Circling Cat D visibility to 2¼ miles. For inop MALSRL increase S-LOC 13 Cats C and D visibility to 1¾ miles. VDP NA when using Port Isabel altimeter setting. **RVR 1800 authorized with use of FD or AP or HUD to DA, NA when using Port Isabel altimeter setting.

MALSRL
⚠ MISSED APPROACH: Climb to 700 then climbing left turn to 2000 direct HRL VOR/DME and hold.

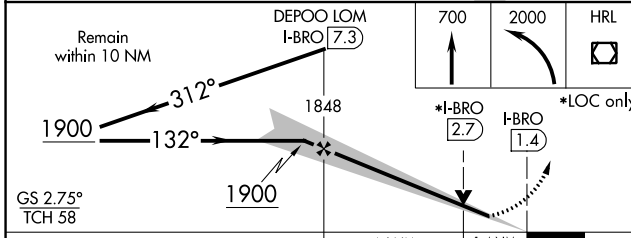
ATIS 128.55	VALLEY APP CON 119.5 257.6	BROWNSVILLE TOWER* 118.9 (CTAF) 239.3	GND CON 121.9	UNICOM 122.95
-----------------------	--------------------------------------	--	-------------------------	-------------------------



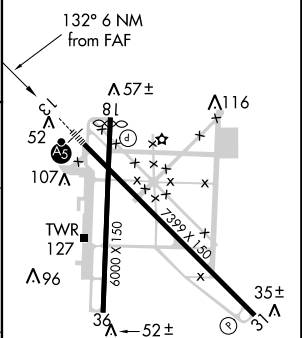
SC-3, 31 JAN 2019 to 28 FEB 2019

SC-3, 31 JAN 2019 to 28 FEB 2019

ADF or RADAR REQUIRED



ELEV 22	D	TDZE 19
----------------	----------	----------------



CATEGORY	A	B	C	D
S-ILS 13 **		219/24	200 (200-½)	
S-LOC 13	480/24	461 (500-½)	480/50	461 (500-1)
C CIRCLING	480-1 458 (500-1)	540-1 518 (600-1)	540-1½ 518 (600-1½)	680-2 658 (700-2)

MIRL Rwy 18-36	HIRL Rwy 13-31				
FAF to MAP 6 NM					
Knots	60	90	120	150	180
Min:Sec	6:00	4:00	3:00	2:24	2:00