

WYLYY THREE DEPARTURE (RNAV)

AL-58 (FAA)

BOSTON, MASSACHUSETTS

NE-1, 31 JAN 2019 to 28 FEB 2019

DEPARTURE ROUTE DESCRIPTION

TAKEOFF RWY 27: Climb heading 272° to intercept course 234° to cross WYLYY at or above 2300, then on depicted route to CYOTI, thence. . . .

. . . .expect vectors to assigned fix/**NAVAID** (see notes). Maintain 5000 or lower assigned altitude. Expect clearance to filed altitude/flight level within ten (10) minutes after departure.

TOP ALTITUDE: 5000

NOTE: Departures assigned routing via LBSTA, PSM VOR/DME, MHT VOR/DME, HYLYND, or REVSS direct SPENO, BLZZR direct ONEPS, PATSS, GLYDE or BOSOX, expect radar vectors to the right to assigned route/fix.

NOTE: Departure hdg/RNAV tracks/vectors are predicated on avoiding noise sensitive areas. Flight crew awareness and compliance is important in minimizing noise impacts on surrounding communities.

NOTE: ATC assigned. Do not file.

NOTE: DME/DME/IRU or GPS required.

NOTE: RNAV 1

NOTE: For Turbojets only.

NOTE: RADAR required.

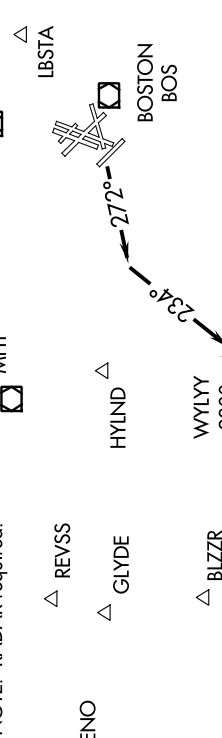
MANCHESTER MHT

PEASE PSM

LBSTA

BOSTON BOS

CELTIC



NOTE: Departures assigned routing via CELTIK, FRILL, LFV VOR/DME, ACK VOR/DME, BRUWN, SSOXS, LUCOS, SEY VOR/DME, or BURDY expect radar vectors to the left to assigned route/fix.

D-ATIS 133.0
CINC DEL 121.65 257.8
CPDIC 121.9
GND CON 128.8 257.8
BOSTON TOWER 128.8 257.8
BOSTON DEP CON 133.0

CHESTER CTR

BARNES BAF

SPENO

GLYDE

BLZZR

BOSOX

PATSS

ONEPS

HYLYND

WYLYY 2300

CYOTI

BURDY

SSOXS

LUCOS

BRUWN

NANTUCKET ACK

FRILL

NELIE

TAKEOFF MINIMUMS:
 Rwy 4L, 4R, 9, 14, 15L, 15R, 22L, 22R, 32, 33L, 33R: NA-ATC.
 Rwy 27: Standard with a minimum climb of 474' per NM to 2300.

NOTE: Chart not to scale.

WYLYY THREE DEPARTURE (RNAV)

NE-1, 31 JAN 2019 to 28 FEB 2019