

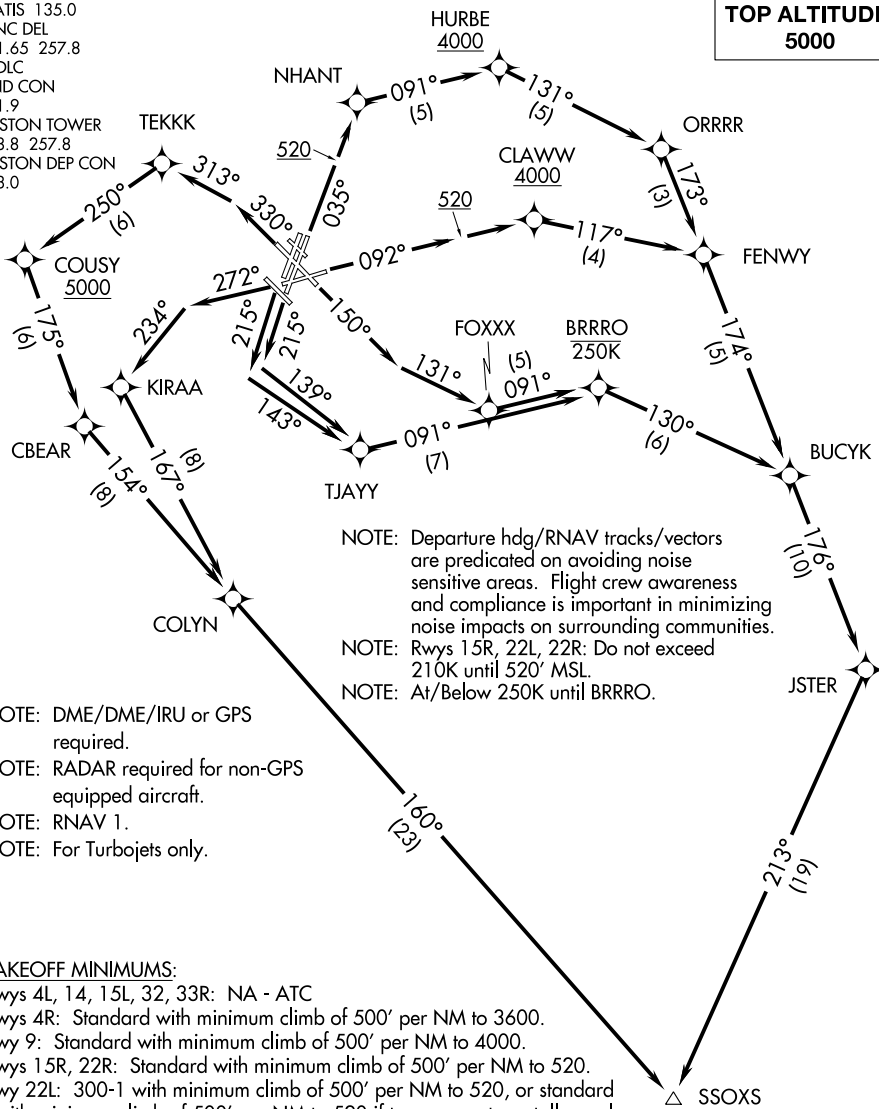
SSOXS FIVE DEPARTURE (RNAV)

AL-58 (FAA)

BOSTON, MASSACHUSETTS

D-ATIS 135.0
CLNC DEL
121.65 257.8
CPDLC
GND CON
121.9
BOSTON TOWER
128.8 257.8
BOSTON DEP CON
133.0

**TOP ALTITUDE:
5000**



NOTE: Departure hdg/RNAV tracks/vectors are predicated on avoiding noise sensitive areas. Flight crew awareness and compliance is important in minimizing noise impacts on surrounding communities.

NOTE: Rwys 15R, 22L, 22R: Do not exceed 210K until 520' MSL.

NOTE: At/Below 250K until BRRRO.

NOTE: DME/DME/IRU or GPS required.

NOTE: RADAR required for non-GPS equipped aircraft.

NOTE: RNAV 1.

NOTE: For Turbojets only.

TAKEOFF MINIMUMS:

Rwys 4L, 14, 15L, 32, 33R: NA - ATC

Rwys 4R: Standard with minimum climb of 500' per NM to 3600.

Rwy 9: Standard with minimum climb of 500' per NM to 4000.

Rwys 15R, 22R: Standard with minimum climb of 500' per NM to 520.

Rwy 22L: 300-1 with minimum climb of 500' per NM to 520, or standard with minimum climb of 500' per NM to 520 if tower reports no tall vessels in the departure area.

Rwy 27: Standard with a minimum climb of 500' per NM to 1300.

Rwy 33L: Standard with a minimum climb of 500' per NM to 4900.



BUZR D

SANDY POINT



SEY

(NARRATIVE ON FOLLOWING PAGE)

NOTE: Chart not to scale.

NE-1, 31 JAN 2019 to 28 FEB 2019

NE-1, 31 JAN 2019 to 28 FEB 2019