

# RNAV (GPS) RWY 32

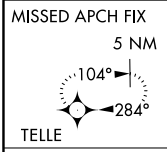
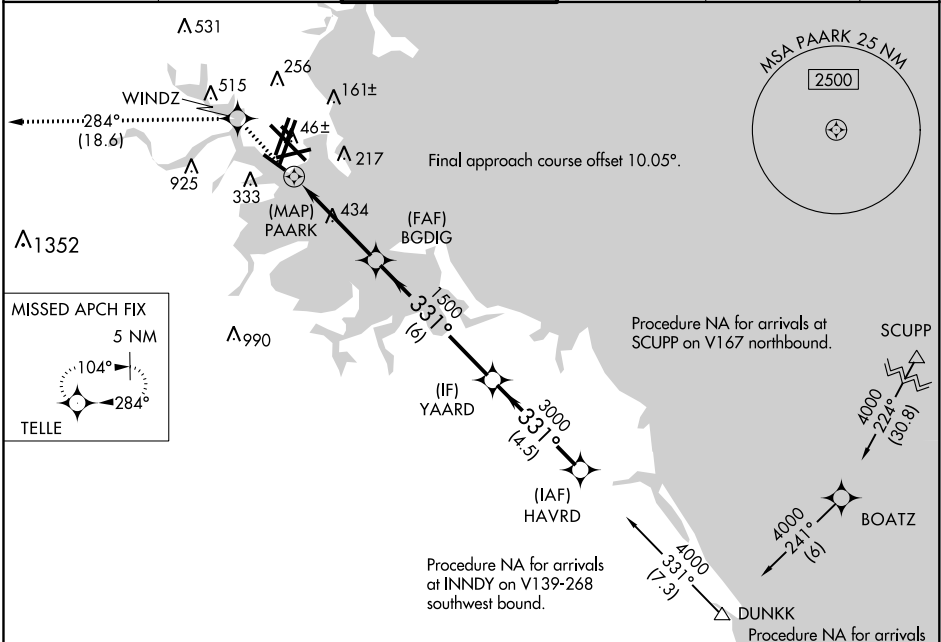
GENERAL EDWARD LAWRENCE LOGAN INTL (BOS)

APP CRS	Rwy Idg	<b>5000</b>
<b>331°</b>	TDZE	<b>19</b>
	Apt Elev	<b>19</b>

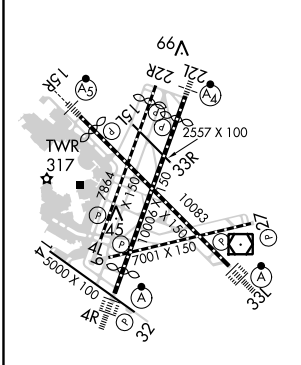
**V** DME/DME RNP-0.3 NA. Circling NA to Rwy 14.  
**A** Circling NA for Cats C and D west of Rwy 4L and 15R.

MISSED APPROACH: Climb to 3000 direct WINDZ and on track 284° to TELLE and hold.

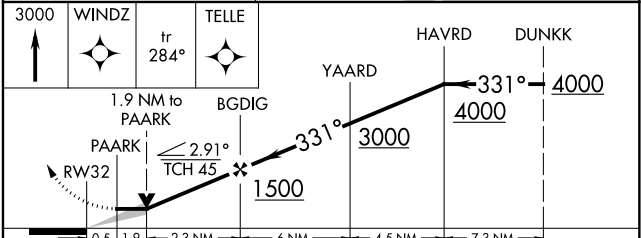
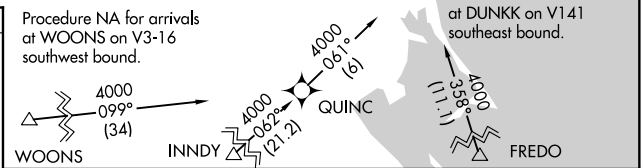
D-ATIS	BOSTON APP CON	BOSTON TOWER	GND CON	CLNC DEL	CPDLC
<b>135.0</b>	<b>120.6 263.1</b>	<b>128.8 257.8</b>	<b>121.9</b>	<b>121.65 257.8</b>	



ELEV 19	<b>D</b> TDZE 19
---------	------------------



TDZ/CL Rwy 4R, 15R and 33L  
 REIL Rwy 4L, 27 and 32  
 MRL Rwy 15L-33R  
 HIRL Rwy 4L-22R, 4R-22L, 9-27, 14-32 and 15R-33L



CATEGORY	A	B	C	D
LNAV MDA	820-1 801 (900-1)	820-1½ 801 (900-1½)	820-2½	801 (900-2½)
<b>C</b> CIRCLING	960-1½ 941 (1000-1½)	1060-1½ 1041 (1100-1½)	820-2½	801 (900-2½)

NE-1, 31 JAN 2019 to 28 FEB 2019

NE-1, 31 JAN 2019 to 28 FEB 2019