

APP CRS	Rwy Idg	7000
272°	TDZE	17
	Apt Elev	19

RNAV (GPS) RWY 27

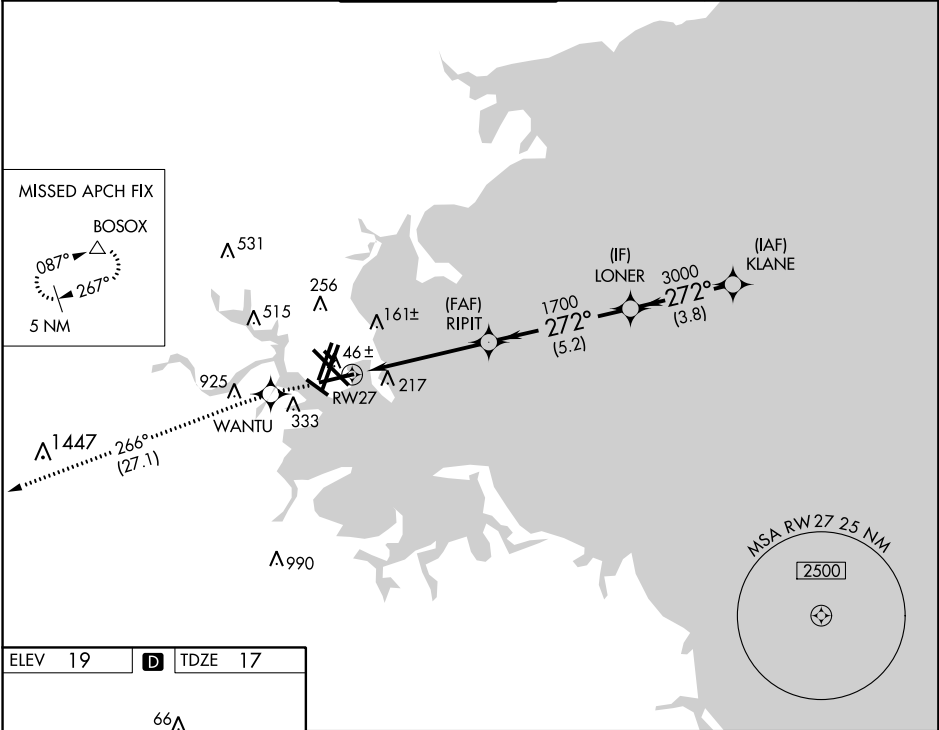
GENERAL EDWARD LAWRENCE LOGAN INTL (BOS)



For uncompensated Baro-VNAV systems, LNAV/VNAV NA below -1.5°C (5°F) or above 54°C (130°F). DME/DME RNP-0.3 NA. Circling NA to Rwy 14. Circling NA for Cats C and D west of Rwys 4L and 15R.

MISSED APPROACH: Climb to 3000 direct WANTU and on track 266° to BOSOX and hold.

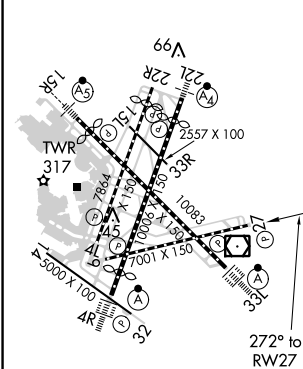
D-ATIS	BOSTON APP CON	BOSTON TOWER	GND CON	CLNC DEL	CPDLC
135.0	120.6 263.1	128.8 257.8	121.9	121.65 257.8	



NE-1, 31 JAN 2019 to 28 FEB 2019

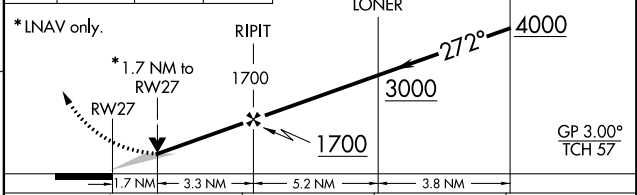
NE-1, 31 JAN 2019 to 28 FEB 2019

ELEV 19	D	TDZE 17
---------	----------	---------



TDZ/CL Rwys 4R, 15R and 33L
 REIL Rwys 4L, 27 and 32
 MIRL Rwy 15L-33R
 HIRL Rwys 4L-22R, 4R-22L, 9-27, 14-32 and 15R-33L

3000	WANTU	tr 266°	BOSOX	VGSI and RNAV glidepath not coincident (VGSI Angle 3.00/TCH 71).
				KLANE



CATEGORY	A	B	C	D
LNAV/ VNAV DA	504-1 3/4 487 (500-1 3/4)			
LNAV MDA	640-1	623 (700-1)	640-1 3/4	640-2
			623 (700-1 3/4)	623 (700-2)
CIRCLING	960-1 1/4	1060-1 1/2	640-1 3/4	640-2
	941 (1000-1 1/4)	1041 (1100-1 1/2)	621 (700-1 3/4)	621 (700-2)