

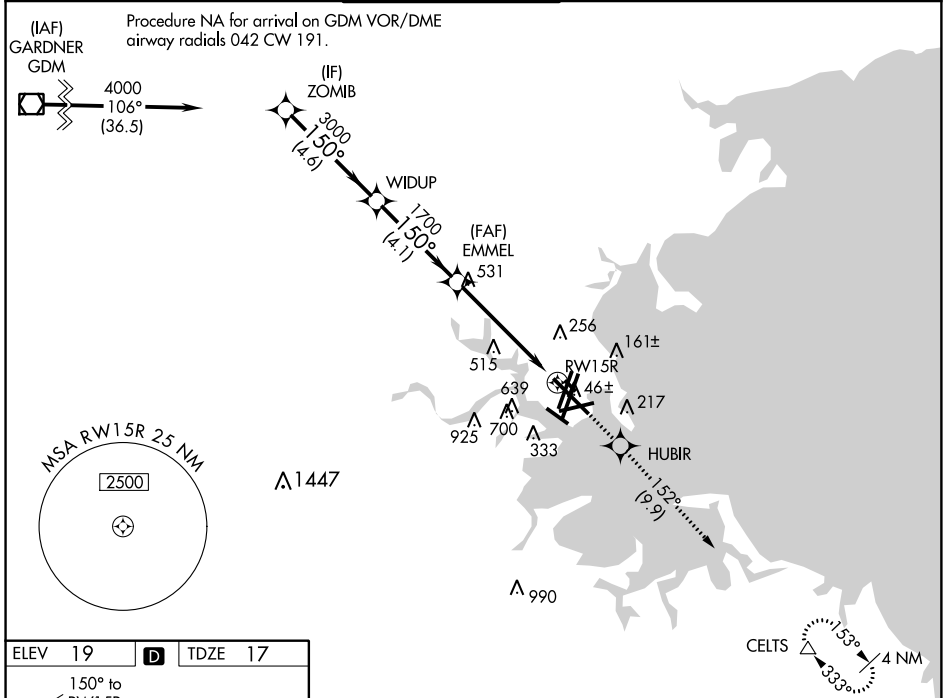
WAAS CH <b>42925</b> <b>W15A</b>	APP CRS <b>150°</b>	Rwy Idg TDZE Apt Elev	<b>9201</b> <b>17</b> <b>19</b>
--	------------------------	-----------------------------	---------------------------------------

# RNAV (GPS) RWY 15R

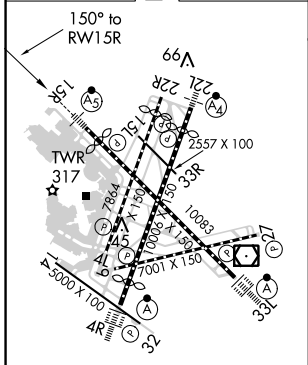
GENERAL EDWARD LAWRENCE LOGAN INTL (BOS)

<p><b>⚠</b> DME/DME RNP-0.3 NA. Circling NA to Rwy 14. Circling NA for Cats C and D west of Rwy 4L and 15R. For inoperative ALS, increase LNAV Cats C and D visibility to 1 3/4 SM. For uncompensated Baro-VNAV systems, LNAV/VNAV NA below -13°C (9°F) or above 43°C (109°F).</p>	MALSR	<p>MISSED APPROACH: Climb to 3000 direct HUBIR and on track 152° to CELTS and hold.</p>

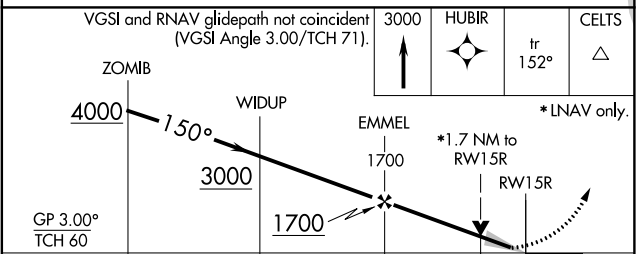
D-ATIS <b>135.0</b>	BOSTON APP CON <b>120.6 263.1</b>	BOSTON TOWER <b>128.8 257.8</b>	GND CON <b>121.9</b>	CLNC DEL <b>121.65 257.8</b>	CPDLC
------------------------	--------------------------------------	------------------------------------	-------------------------	---------------------------------	-------



ELEV 19	<b>D</b>	TDZE 17
---------	----------	---------



TDZ/CL Rwy 4R, 15R and 33L  
 REIL Rwy 4L, 27 and 32  
 MIRL Rwy 15L-33R  
 HIRL Rwy 4L-22R, 4R-22L, 9-27, 14-32 and 15R-33L



CATEGORY	A	B	C	D
LPV DA		217/18	200 (200-1/2)	
LNAV/ VNAV DA		567-1 3/8	550 (600-1 3/8)	
LNAV MDA	620/24	603 (700-1/2)	620-1 3/8	603 (700-1 3/8)
CIRCLING	960-1 1/4	1060-1 1/2	640-1 3/4	640-2
	941 (1000-1 1/4)	1041 (1100-1 1/2)	621 (700-1 3/4)	621 (700-2)

NE-1, 31 JAN 2019 to 28 FEB 2019

NE-1, 31 JAN 2019 to 28 FEB 2019