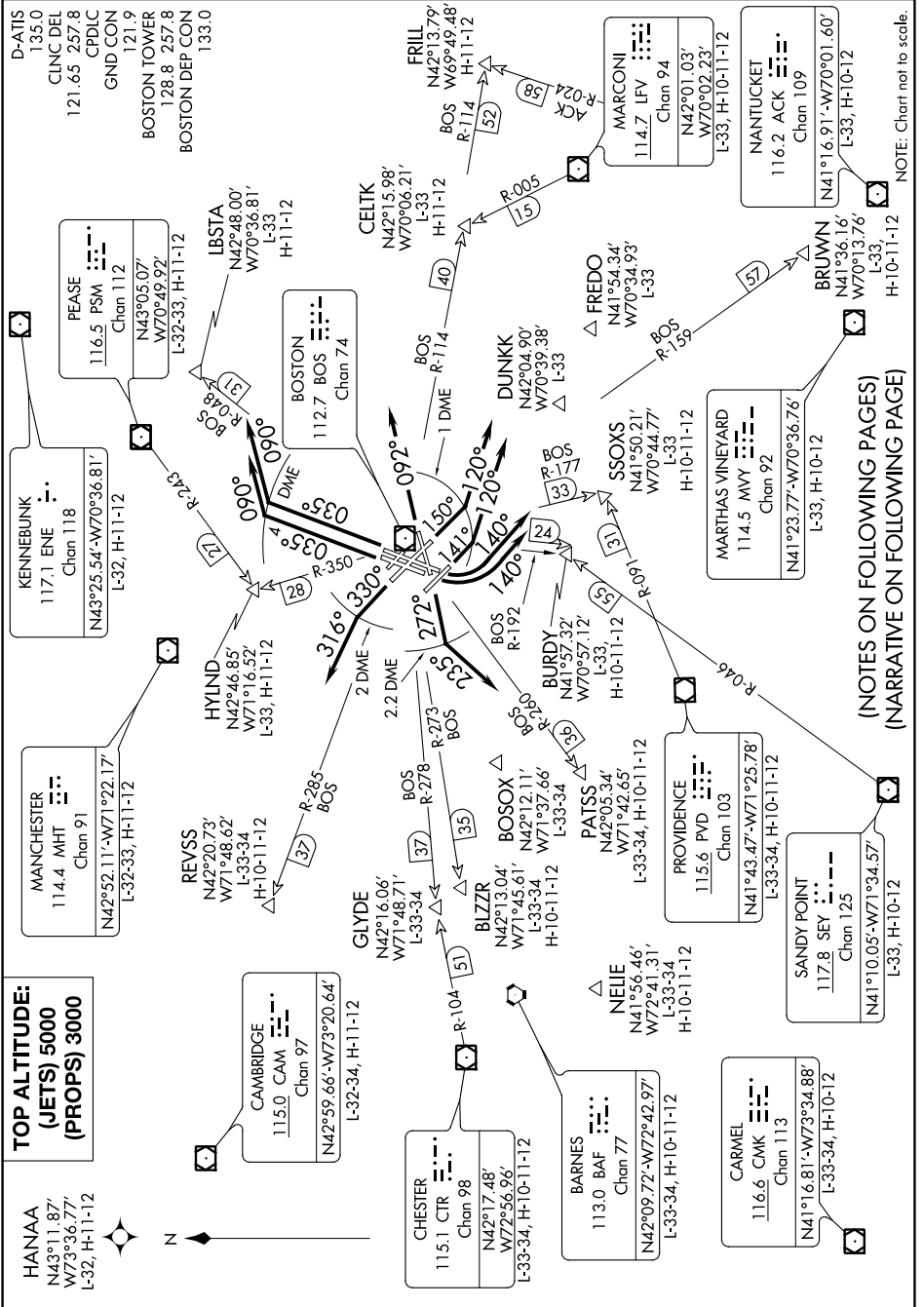


(LOGAN2.BOS) 18144
LOGAN TWO DEPARTURE

GENERAL EDWARD LAWRENCE LOGAN INTL (BOS)
 AL-58 (FAA) BOSTON, MASSACHUSETTS

NE-1, 31 JAN 2019 to 28 FEB 2019



LOGAN TWO DEPARTURE
 (LOGAN2.BOS) 120CT17

BOSTON, MASSACHUSETTS
 GENERAL EDWARD LAWRENCE LOGAN INTL (BOS)

(NOTES ON FOLLOWING PAGES)
 (NARRATIVE ON FOLLOWING PAGE)

NE-1, 31 JAN 2019 to 28 FEB 2019

NOTE: Chart not to scale.