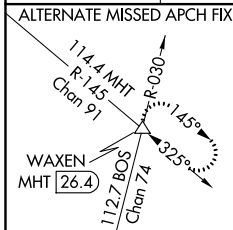


LOC/DME I-BOS 110.3 Chan 40	APP CRS 035°	Rwy Idg 8851 TDZE 18 Apt Elev 19
---	------------------------	---

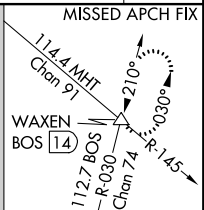
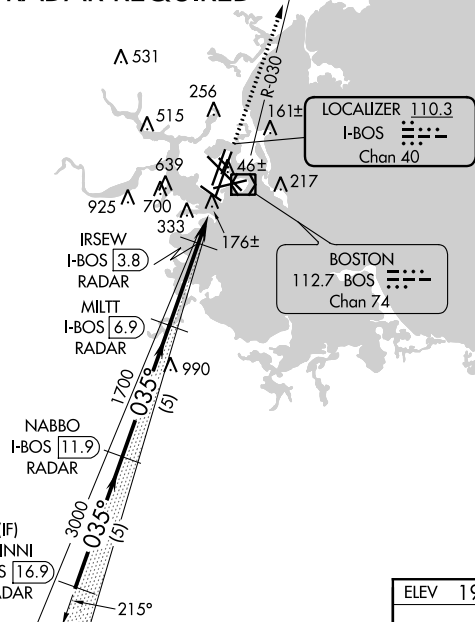
ILS or LOC RWY 4R
GENERAL EDWARD LAWRENCE LOGAN INTL (BOS)

<p>⚠ Circling NA for Cats C and D west of Rwy 4L and 15R. Circling NA to Rwy 14. # For inop ALS, increase S-ILS 4R all Cats visibility to RVR 6000, and S-LOC 4R Cats A and B visibility to RVR 5000; Rwy 4R helicopter visibility below 4000 RVR NA. † When vessels taller than 144 feet present, S-ILS 4R NA.</p>	<p>ALSF-2 </p>	<p>MISSED APPROACH: Climb to 3000 on BOS VOR/DME R-030 to WAXEN INT/BOS 14 DME and hold.</p>
--	--------------------	--

D-ATIS 135.0	BOSTON APP CON 120.6 263.1	BOSTON TOWER 128.8 257.8	GND CON 121.9	CINC DEL 121.65 257.8	CPDLC
------------------------	--------------------------------------	------------------------------------	-------------------------	---------------------------------	-------

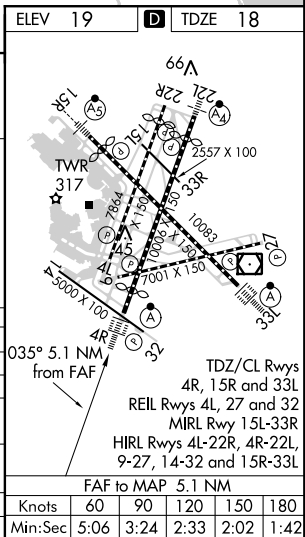
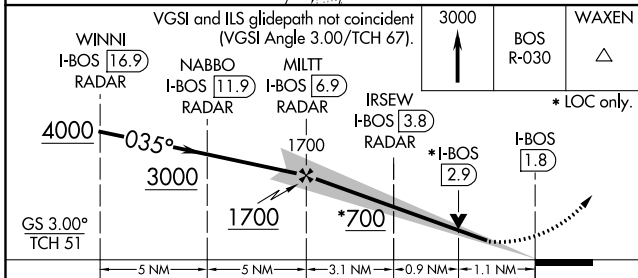
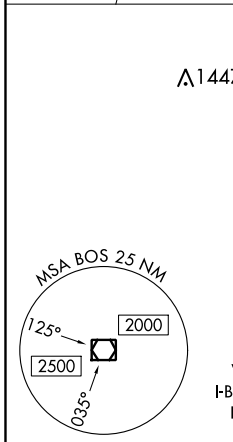


RADAR REQUIRED



NE-1, 31 JAN 2019 to 28 FEB 2019

NE-1, 31 JAN 2019 to 28 FEB 2019



CATEGORY	A	B	C	D
S-ILS 4R		218/18	200 (200-½)	
S-LOC 4R	440/24	422 (500-½)	440/40	422 (500-¾)
C CIRCLING	960-1¼ 941 (1000-1¼)	1060-1½ 1041 (1100-1½)	640-1¾ 621 (700-1¾)	640-2 621 (700-2)
† APPROACH MINIMA WHEN CONTROL TOWER REPORTS TALL VESSELS IN APPROACH AREA				
S-ILS 4R #		374/40	356 (400-¾)	
S-LOC 4R #		440/40	422 (500-¾)	

ELEV 19	D TDZE 18
FAF to MAP 5.1 NM	
Knots	60 90 120 150 180
Min:Sec	5:06 3:24 2:33 2:02 1:42