

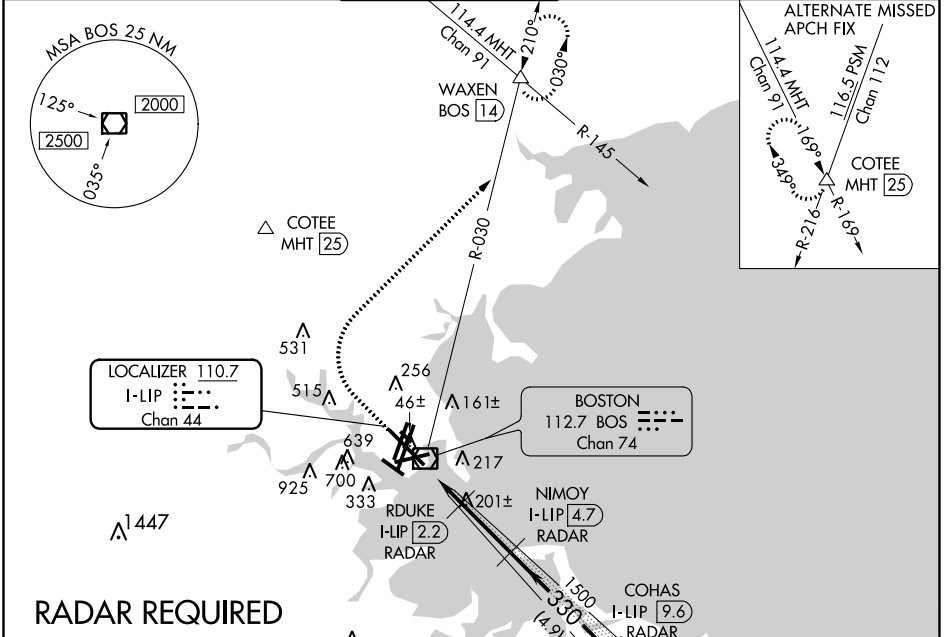
LOC/DME I-LIP	APP CRS	Rwy Idg	10083
110.7	330°	TDZE	16
Chan 44		Apt Elev	19

ILS or LOC RWY 33L

GENERAL EDWARD LAWRENCE LOGAN INTL (BOS)

⚠ DME or RADAR required. ⚠ Circling NA for Cats C and D west of Rwys 4L and 15R. Circling NA to Rwy 14.	ALSF-2 	MISSED APPROACH: Climb to 1500 then climbing right turn to 3000 on BOS VOR/DME R-030 to WAXEN INT/BOS 14 DME and hold.
---	------------	--

D-ATIS 135.0	BOSTON APP CON 120.6 263.1	BOSTON TOWER 128.8 257.8	GND CON 121.9	CLNC DEL 121.65 257.8	CPDLC
------------------------	--------------------------------------	------------------------------------	-------------------------	---------------------------------	-------

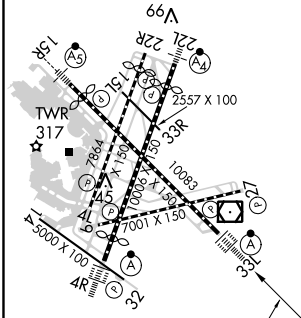


LOCALIZER 110.7
I-LIP
Chan 44

BOSTON 112.7 BOS
Chan 74

RADAR REQUIRED

ELEV 19	D	TDZE 16
---------	----------	---------



TDZ/CL Rwys 4R, 15R and 33L
REIL Rwys 4L, 27 and 32
MIRL Rwy 15L-33R 330° 4.5 NM
HIRL Rwys 4L-22R, 4R-22L, from FAF 9-27, 14-32 and 15R-33L
FAF to MAP 4.5 NM

Knots	60	90	120	150	180
Min:Sec	4:30	3:00	2:15	1:48	1:30

1500	3000	WAXEN △	VGSI and ILS glidepath not coincident (VGSI Angle 3.00/TCH 68).	BENNN I-LIP 15 RADAR	
		BOS R-030	NIMOY I-LIP 4.7 RADAR	COHAS I-LIP 9.6 RADAR	
*LOC only.		RDUKE I-LIP 2.2 RADAR	1500	4000	
I-LIP 0.2	*I-LIP 1.4	*700	1500	3000	
1.2 NM	0.8 NM	2.5 NM	4.9 NM	5.4 NM	
CATEGORY		A	B	C	D
S-ILS 33L		216/18		200 (200-½)	
S-LOC 33L		460/24 444 (500-½)		460/45 444 (500-¾)	
CIRCLING		960-1¼ 941 (1000-1¼)	1060-1½ 1041 (1100-½)	640-1¾ 621 (700-¾)	640-2 621 (700-2)

NE-1, 31 JAN 2019 to 28 FEB 2019

NE-1, 31 JAN 2019 to 28 FEB 2019