

LOC/DME I-LQN 110.3 Chan 40	APP CRS 215°	Rwy Idg 8806 TDZE 16 Apt Elev 19
--	------------------------	---

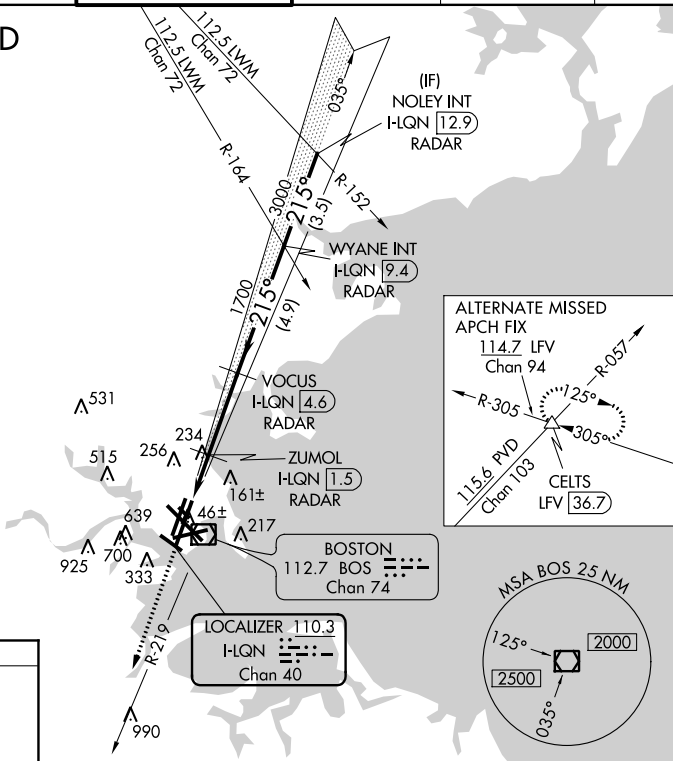
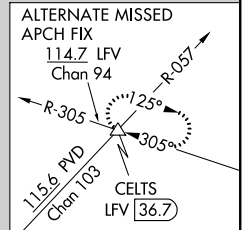
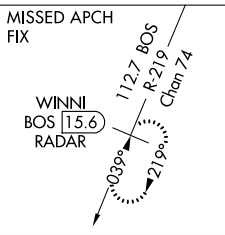
ILS or LOC RWY 22L

GENERAL EDWARD LAWRENCE LOGAN INTL (BOS)

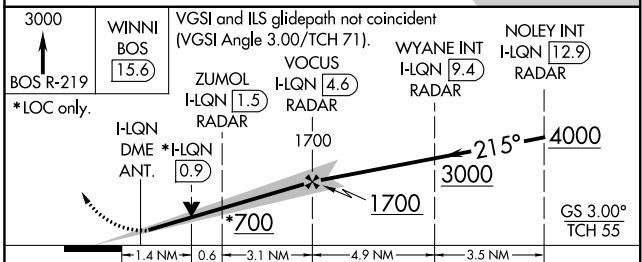
<p>⚠ DME or RADAR required. Circling NA for Cats C and D west of Rws 4L and 15R. Circling NA to Rwy 14. For inoperative ALS, increase S-LOC 22L Cat D visibility to 1½ mile.</p>	MALSF 	MISSED APPROACH: Climb to 3000 on BOS VOR/DME R-219 to WINNI/ BOS 15.6 DME/RADAR and hold.

D-ATIS 135.0	BOSTON APP CON 120.6 263.1	BOSTON TOWER 128.8 257.8	GND CON 121.9	CLNC DEL 121.65 257.8	CPDLC
------------------------	--------------------------------------	------------------------------------	-------------------------	---------------------------------	-------

RADAR REQUIRED



ELEV 19	TDZE 16
215° 5.1 NM from FAF	
<p>TDZ/CL Rws 4R, 15R and 33L REIL Rws 4L, 27 and 32 MIRL Rwy 15L-33R HIRL Rws 4L-22R, 4R-22L, 9-27, 14-32 and 15R-33L</p>	
FAF to MAP 5.1 NM	
Knots	60 90 120 150 180
Min:Sec	5:06 3:24 2:33 2:02 1:42



CATEGORY	A	B	C	D
S-ILS 22L	216/40 200 (200-¾)			
S-LOC 22L	540/40	524 (600-¾)	540-1¼	524 (600-1¼)
CIRCLING	960-1¼ 941 (1000-1¼)	1060-1½ 1041 (1100-1½)	640-1¾ 621 (700-1¾)	640-2 621 (700-2)

NE-1, 31 JAN 2019 to 28 FEB 2019

NE-1, 31 JAN 2019 to 28 FEB 2019