

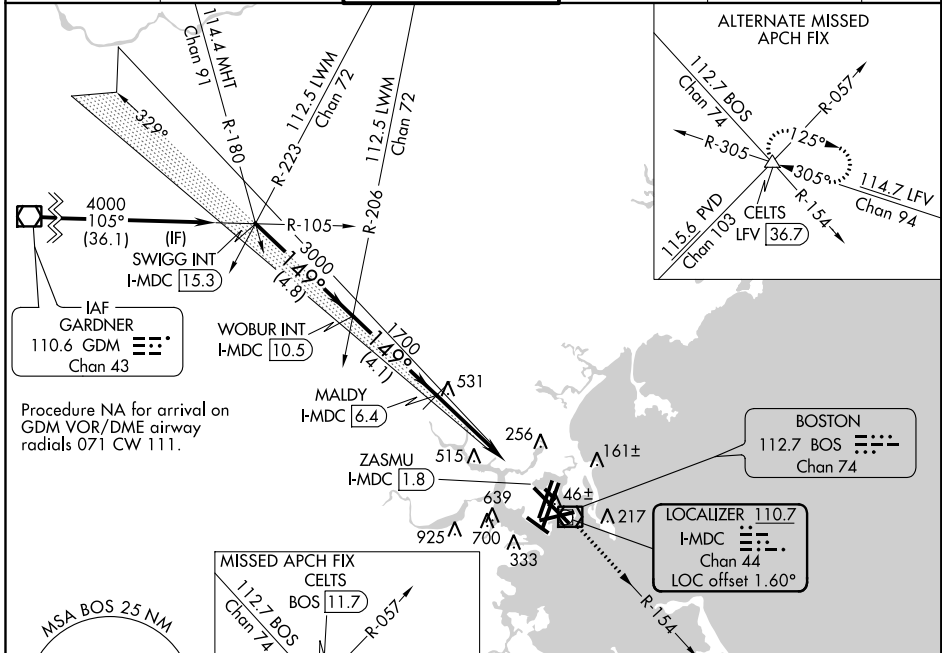
LOC/DME I-MDC	APP CRS	Rwy Idg	9201
110.7	149°	TDZE	17
Chan 44		Apt Elev	19

ILS or LOC RWY 15R

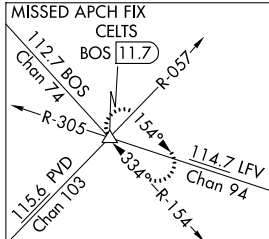
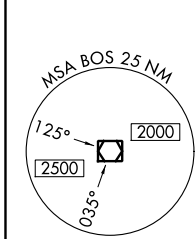
GENERAL EDWARD LAWRENCE LOGAN INTL (BOS)

<p>DME required. Circling NA for Cats C and D west of Rwy 4L and 15R. Circling NA to Rwy 14.</p>	<p>MALS R</p>	<p>MISSED APPROACH: Climb to 3000 on BOS VOR/DME R-154 to CELTS INT/BOS 11.7 DME and hold.</p>

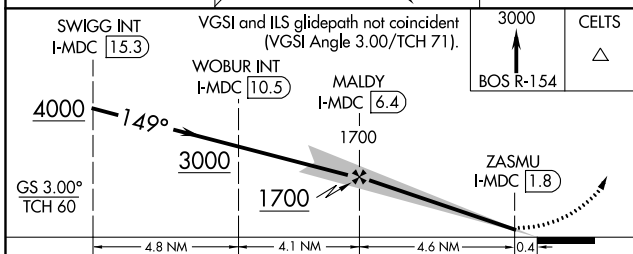
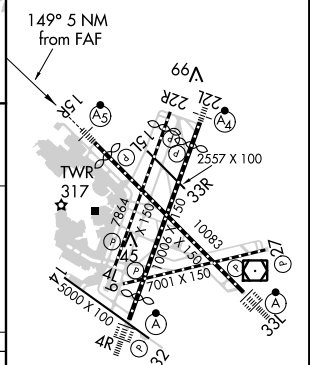
D-ATIS	BOSTON APP CON	BOSTON TOWER	GND CON	CLNC DEL	CPDLC
135.0	120.6 263.1	128.8 257.8	121.9	121.65 257.8	



Procedure NA for arrival on GDM VOR/DME airway radials 071 CW 111.



ELEV 19	D	TDZE 17
---------	----------	---------



CATEGORY	A	B	C	D
S-ILS 15R	267/24 250 (300-½)			
S-LOC 15R	600/24	583 (600-½)	600-1¼	583 (600-1¼)
CIRCLING	960-1¼ 941 (1000-1¼)	1060-1½ 1041 (1100-1½)	640-1¾ 621 (700-1¾)	640-2 621 (700-2)

TDZ/CL Rwy 4R, 15R and 33L
 REIL Rwy 4L, 27 and 32
 MIRL Rwy 15L-33R
 HIRL Rwy 4L-22R, 4R-22L, 9-27, 14-32 and 15R-33L

NE-1, 31 JAN 2019 to 28 FEB 2019

NE-1, 31 JAN 2019 to 28 FEB 2019