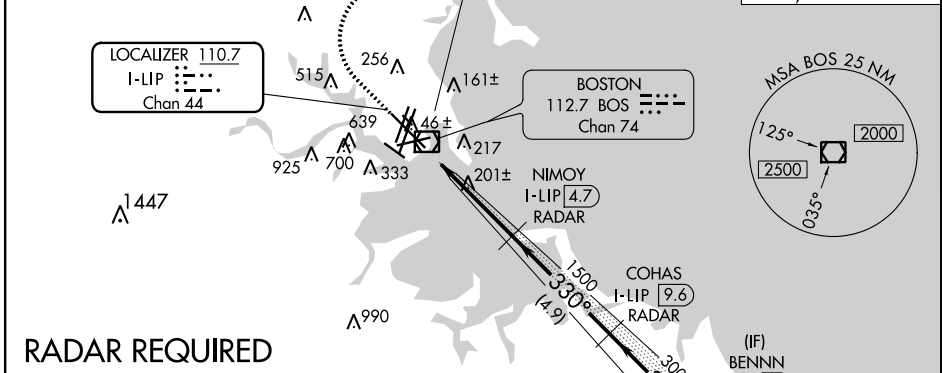
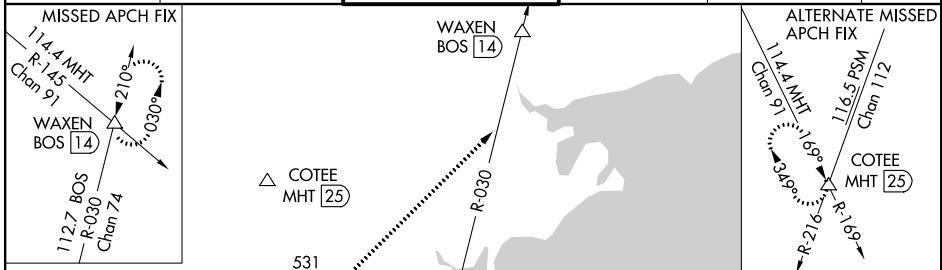


LOC/DME I-LIP <b>110.7</b> Chan <b>44</b>	APP CRS <b>330°</b>	Rwy Idg <b>10083</b> TDZE <b>16</b> Apt Elev <b>19</b>
---	------------------------	--

# ILS RWY 33L (CAT II & III)

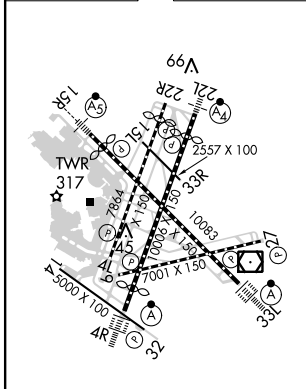
GENERAL EDWARD LAWRENCE LOGAN INTL (BOS)

<p><b>⚠</b> DME or RADAR required.  <b>⚠</b> CAT II: RVR 1000 authorized with specific OPSPEC, MSPEC, or LOA approval and use of autoland or HUD to touchdown.</p>		<p>ALSIF-2</p>	<p>MISSED APPROACH: Climb to 1500 then climbing right turn to 3000 on BOS VOR/DME R-030 to WAXEN INT/BOS 14 DME and hold.</p>		
D-ATIS <b>135.0</b>	BOSTON APP CON <b>120.6 263.1</b>	BOSTON TOWER <b>128.8 257.8</b>	GND CON <b>121.9</b>	CLNC DEL <b>121.65 257.8</b>	CPDLC

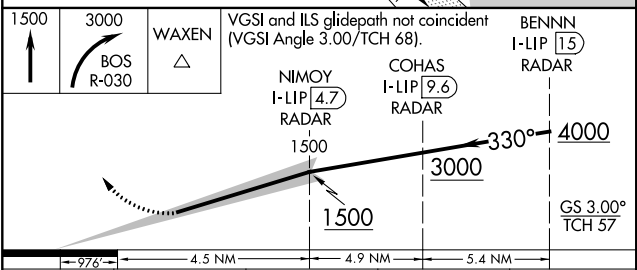


## RADAR REQUIRED

ELEV 19	<b>D</b>	TDZE 16
---------	----------	---------



TDZ/CL Rwy 4R, 15R and 33L  
 REIL Rwy 4L, 27 and 32  
 MIRL Rwy 15L-33R  
 HIRL Rwy 4L-22R, 4R-22L,  
 9-27, 14-32 and 15R-33L



CATEGORY	A	B	C	D
S-ILS 33L	CAT II RA 116/12 100 DA 116			
S-ILS 33L	CAT III RVR 06			

## CATEGORY II & III ILS - SPECIAL AIRCREW & AIRCRAFT CERTIFICATION REQUIRED