

VOR/DME BIS <b>116.5</b> Chan <b>112</b>	APP CRS <b>271°</b>	Rwy Ldg TDZE Apt Elev <b>N/A</b> <b>N/A</b> <b>1661</b>
--	------------------------	--

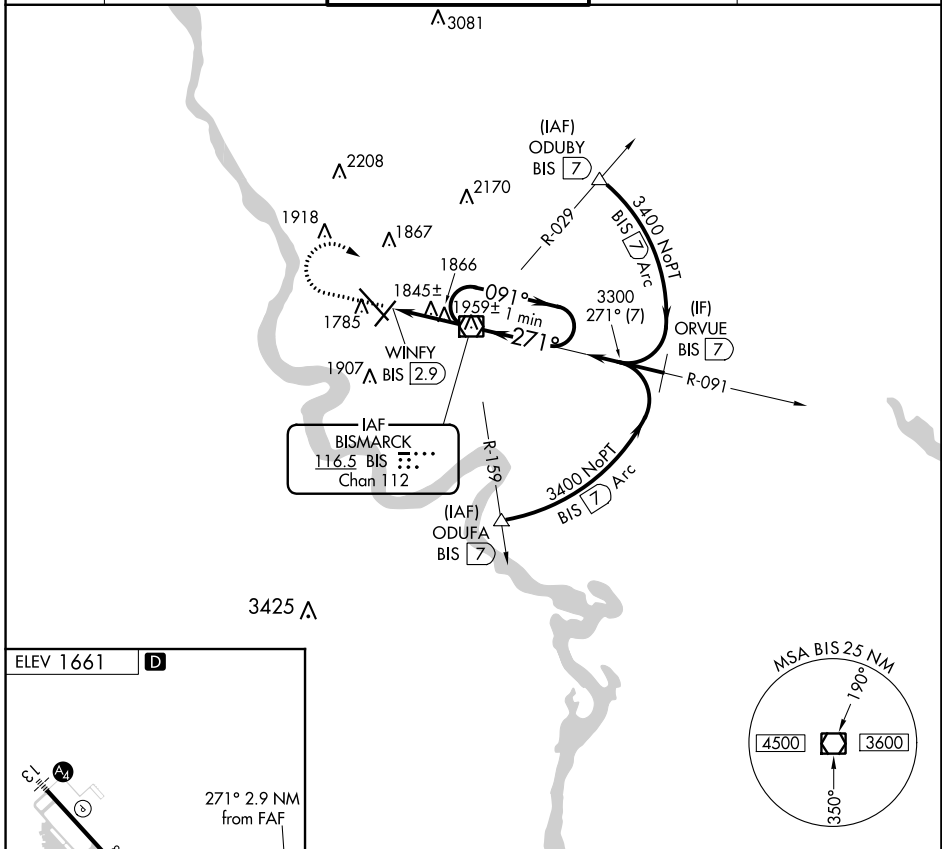
# VOR-A

BISMARCK MUNI (BIS)

ASR  
-35°C

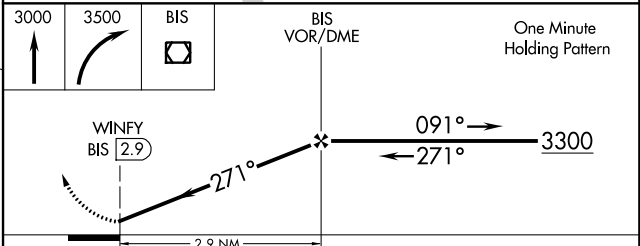
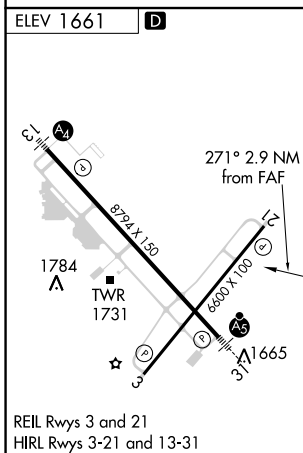
MISSED APPROACH: Climb to 3000 then climbing right turn to 3500 direct BIS VOR/DME and hold.

ATIS <b>119.35</b>	BISMARCK APP CON * <b>126.3 298.9</b>	BISMARCK TOWER * <b>118.3 (CTAF) 0 257.8</b>	GND CON <b>121.9</b>	UNICOM <b>122.95</b>
-----------------------	--	---	-------------------------	-------------------------



NC-1, 31 JAN 2019 to 28 FEB 2019

NC-1, 31 JAN 2019 to 28 FEB 2019



FAF to MAP 2.9 NM					
Knots	60	90	120	150	180
Min:Sec	2:54	1:56	1:27	1:10	0:58
CATEGORY	A		B		
CIRCLING	2240-1		579 (600-1)		2240-1½ 579 (600-1½)
					2320-2 659 (700-2)