

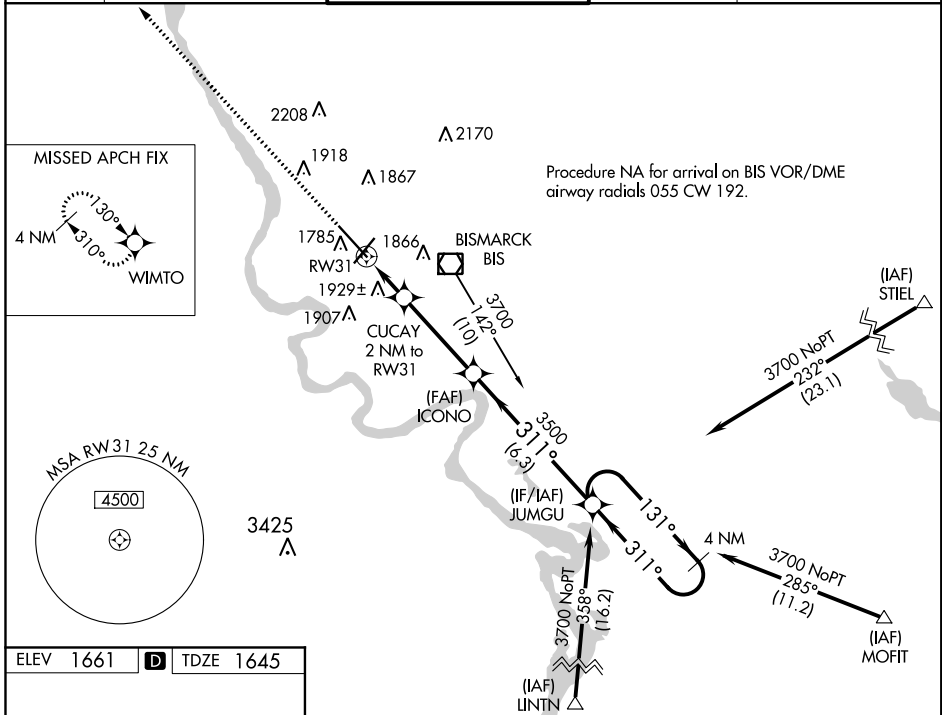
WAAS CH <b>56599</b> W31A	APP CRS <b>311°</b>	Rwy Idg <b>8794</b> TDZE <b>1645</b> Apt Elev <b>1661</b>
---------------------------------	------------------------	---

# RNAV (GPS) RWY 31

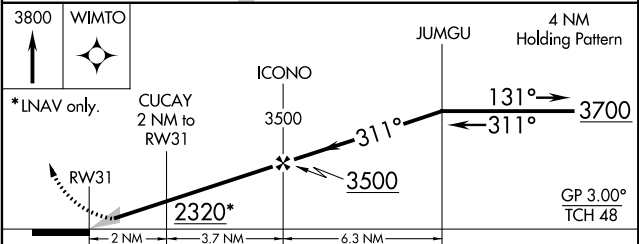
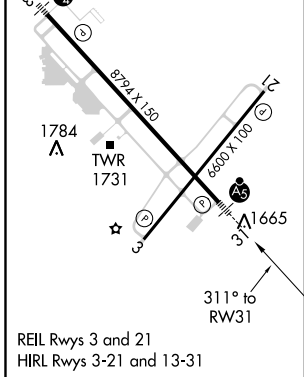
BISMARCK MUNI (BIS)

<p><b>ASR</b></p> <p>For uncompensated Baro-VNAV systems, LNAV/VNAV NA below -18°C (0°F) or above 33°C (91°F). DME/DME RNP-0.3 NA. ** RVR 1800 authorized with use of FD or AP or HUD to DA.</p> <p><b>-35°C</b></p>	<p><b>MALSR</b></p>	<p><b>MISSED APPROACH:</b> Climb to 3800 direct WIMTO and hold.</p>
--	---------------------	---

<p><b>ATIS</b></p> <p><b>119.35</b></p>	<p><b>BISMARCK APP CON*</b></p> <p><b>126.3 298.9</b></p>	<p><b>BISMARCK TOWER*</b></p> <p><b>118.3 (CTAF) 0 257.8</b></p>	<p><b>GND CON</b></p> <p><b>121.9</b></p>	<p><b>UNICOM</b></p> <p><b>122.95</b></p>
---	---	--	---	---



ELEV <b>1661</b>	<b>D</b>	TDZE <b>1645</b>
------------------	----------	------------------



CATEGORY	A	B	C	D
LPV DA	1845/24 200 (200-1/2)			
LNAV/VNAV DA	2269-1 3/4 624 (700-1 3/4)			
LNAV MDA	2180/24	535 (600-1/2)	2180/55	535 (600-1)
CIRCLING	2240-1	579 (600-1)	2240-1 1/2	2320-2
			579 (600-1 1/2)	659 (700-2)

NC-1, 31 JAN 2019 to 28 FEB 2019

NC-1, 31 JAN 2019 to 28 FEB 2019