

ILS or LOC RWY 31

BISMARCK MUNI (BIS)

LOC/DME I-BIS 110.3 Chan 40	APP CRS 311°	Rwy Idg TDZE Apt Elev	8794 1645 1661
--	------------------------	-----------------------------	---

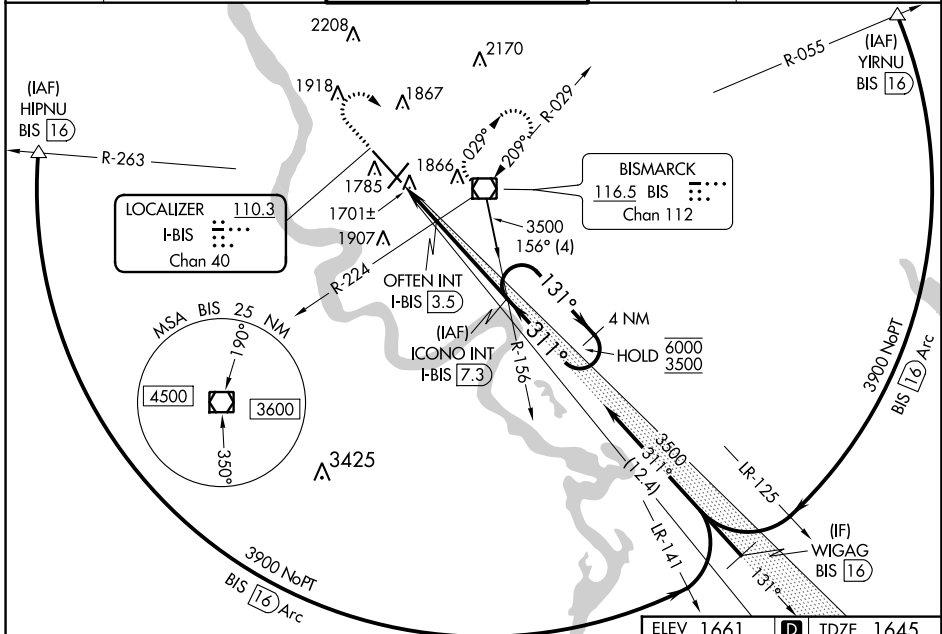
DME required for procedure entry.

Autopilot coupled approach NA below 2680.
For inop ALS, increase S-LOC 31 OFTEN FIX Cat C/D
minimums visibility to RVR 5500.

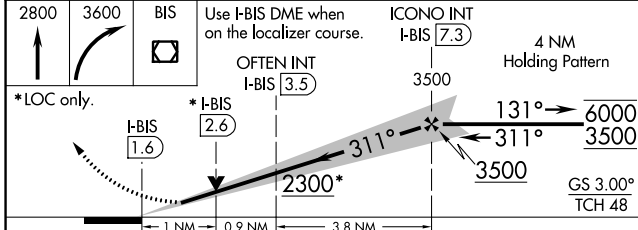
MALSR
ASR
-35°C

MISSED APPROACH: Climb to 2800 then climbing
right turn to 3600 direct BIS VOR/DME and hold.

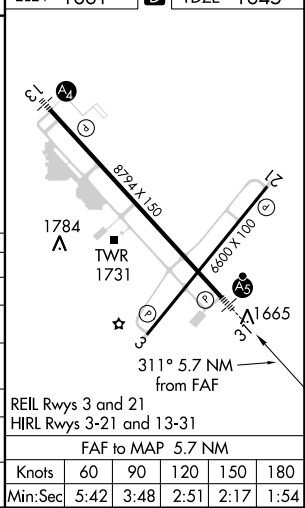
ATIS 119.35	BISMARCK APP CON* 126.3 298.9	BISMARCK TOWER* 118.3 (CTAF) 0 257.8	GND CON 121.9	UNICOM 122.95
-----------------------	---	--	-------------------------	-------------------------



ELEV 1661 D TDZE 1645



CATEGORY	A	B	C	D
S-ILS 31	1845/24		200 (200-½)	
S-LOC 31	2300/24	655 (700-½)	2300-1¾	655 (700-1¾)
CIRCLING	2300-1	639 (700-1)	2460-2¼ 799 (800-2¼)	2460-2½ 799 (800-2½)
OFTEN FIX MINIMUMS (DUAL VOR RECEIVERS OR DME REQUIRED)				
S-LOC 31	2020/24	375 (400-½)	2020/35	375 (400-¾)
CIRCLING	2240-1	579 (600-1)	2460-2¼ 799 (800-2¼)	2460-2½ 799 (800-2½)



NC-1, 31 JAN 2019 to 28 FEB 2019

NC-1, 31 JAN 2019 to 28 FEB 2019

REIL Rws 3 and 21 HIRL Rws 3-21 and 13-31	FAF to MAP 5.7 NM				
Knots	60	90	120	150	180
Min:Sec	5:42	3:48	2:51	2:17	1:54