

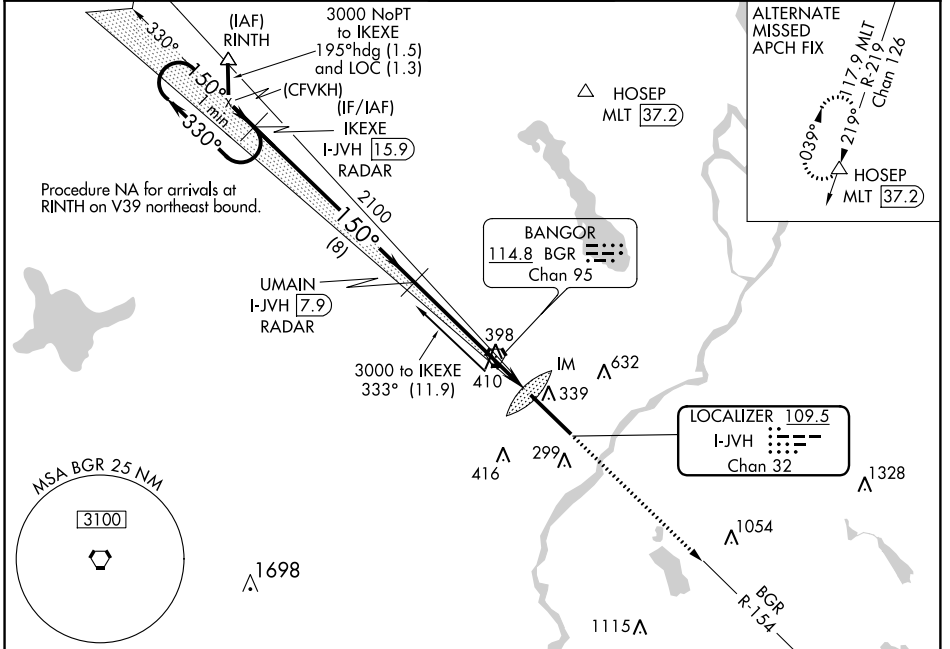
LOC/DME I-JVH <b>109.5</b> Chan <b>32</b>	APP CRS <b>150°</b>	Rwy Idg <b>11440</b> TDZE <b>192</b> Apt Elev <b>192</b>
---	------------------------	--

# ILS Y RWY 15 (CAT II & III)

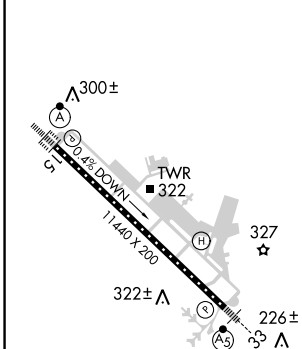
BANGOR INTL (BGR)

<b>ASR</b> DME or RADAR required.	ALSF-2 	MISSED APPROACH: Climb to 3000 on heading 150° and BGR VORTAC R-154 to ELSUH/BGR 18.3 DME/RADAR and hold.

ATIS <b>127.75</b>	BANGOR APP CON <b>118.925 239.3</b>	BANGOR TOWER <b>120.7 233.7</b>	GND CON <b>121.9 348.6</b>	CLNC DEL <b>135.9 348.6</b>
-----------------------	--	------------------------------------	-------------------------------	--------------------------------



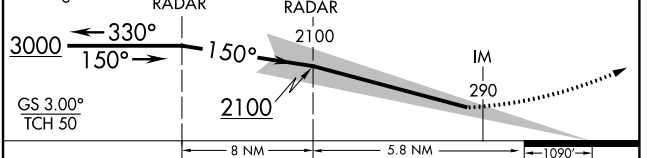
ELEV 192	<b>D</b>	TDZE 192
----------	----------	----------



TDZ/CL Rwy 15 HIRL Rwy 15-33
---------------------------------

## DME or RADAR REQUIRED

VGSi and ILS glidepath not coincident (VGSi Angle 3.00/TCH 55).			
One Minute Holding Pattern	IKEXE I-JVH [15.9] RADAR	U MAIN I-JVH [7.9] RADAR	ELSUH BGR [18.3] RADAR
3000	hdg 150°	BGR R-154	ELSUH BGR [18.3] RADAR



CATEGORY	A	B	C	D
S-ILS 15		CAT II RA 113/12 100 DA 292		
S-ILS 15		CAT III RVR 06		

## CATEGORY II & III ILS - SPECIAL AIRCREW & AIRCRAFT CERTIFICATION REQUIRED

NE-1, 31 JAN 2019 to 28 FEB 2019

NE-1, 31 JAN 2019 to 28 FEB 2019