

|  |                        |                             |  |
|--|------------------------|-----------------------------|--|
| WAAS<br>CH <b>61000</b><br><b>W26B</b> | APP CRS<br><b>275°</b> | Rwy Idg<br>TDZE<br>Apt Elev | <b>8800</b><br><b>990</b><br><b>1026</b> |
|--|------------------------|-----------------------------|--|

# RNAV (GPS) Y RWY 26R

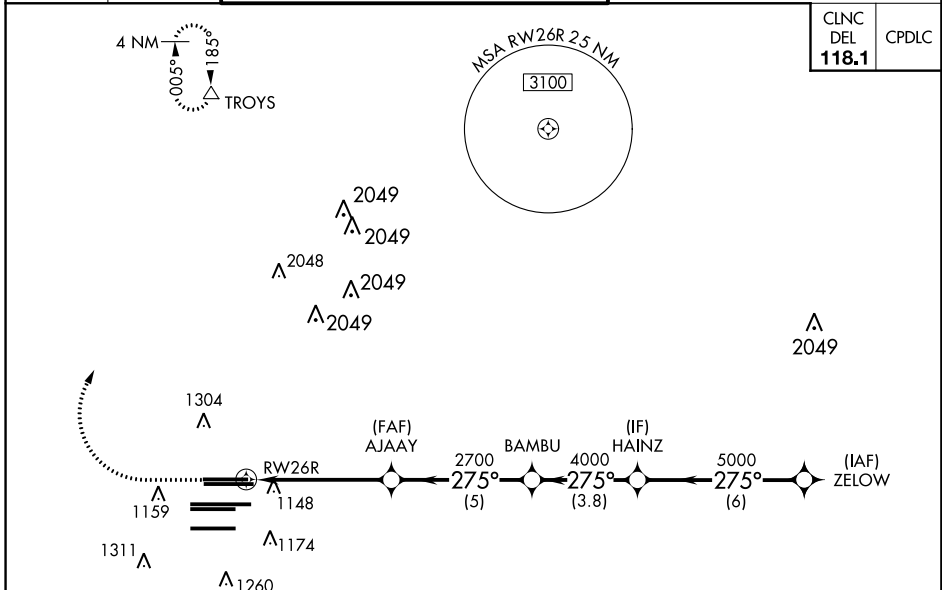
HARTSFIELD-JACKSON ATLANTA INTL (ATL)

**▽** For uncompensated Baro-VNAV systems, LNAV/VNAV NA below -7°C (20°F) or above 54°C (130°F). DME/DME RNP-0.3 NA. Simultaneous approach authorized with Rwy 27R or 27L or 28, or Rwys 27R and 28. LNAV procedure NA during simultaneous operations. Use of FD or AP providing RNAV track guidance required during simultaneous operations.



**MISSED APPROACH:**  
Climb to 1500 then climbing right turn to 3500 direct TROYS and hold.

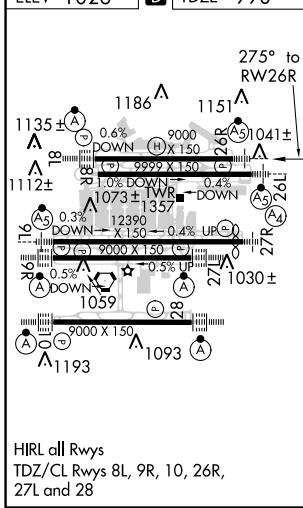
|                             |  |   |              |               |               |              |  |             |
|-----------------------------|--|---|--------------|---------------|---------------|--------------|--|-------------|
| D-ATIS<br>ARR <b>119.65</b> | ATLANTA<br>APP CON<br><b>127.9 379.9</b> | ATLANTA TOWER<br>8L-26R 8R-26L 9L-27R 9R-27L 10-28 RWYS |              |               |               | ALL<br>RWYS  | GND CON<br>(8L-26R,8R-26L) (9L-27R,9R-27L) 10-28 | ALL<br>RWYS |
| DEP <b>125.55</b>           | <b>127.9 379.9</b>                       | <b>119.1 125.325 123.85 119.3 119.5 254.4</b>           | <b>121.9</b> | <b>121.75</b> | <b>121.65</b> | <b>254.4</b> |  |             |



|              |       |
|--------------|-------|
| CINC<br>DEL  | CPDLC |
| <b>118.1</b> |       |

|           |          |          |
|-----------|----------|----------|
| ELEV 1026 | <b>D</b> | TDZE 990 |
|-----------|----------|----------|

## RADAR REQUIRED



|                  |      |         |  |             |             |                 |
|------------------|------|---------|--|-------------|-------------|-----------------|
| 1500             | 3500 | TROYS   | VGSi and RNAV glidepath not coincident (VGSi Angle 3.00/TCH 69). |             | HAINZ       | ZELOW           |
| *LNAV only       |      | AJAAY   | BAMB   | 275°        | 5000        |                 |
| *1.3 NM to RW26R |      | 2700    | 4000   | 5000        |             | GP 3.00° TCH 55 |
| RW26R            |      | 2700    |  |             |             |                 |
| 1.3              |      | 3.9 NM  | 5 NM   | 3.8 NM      | 6 NM        |                 |
| CATEGORY         | A    | B       | C  | D           |             |                 |
| LPV              | DA   | 1190/18 |  | 200 (200-½) |             |                 |
| LNAV/VNAV        | DA   | 1426/50 |  | 436 (500-1) |             |                 |
| LNAV             | MDA  | 1460/24 | 470 (500-½)  | 1460/50     | 470 (500-1) |                 |

SE-4, 31 JAN 2019 to 28 FEB 2019

SE-4, 31 JAN 2019 to 28 FEB 2019