

APP CRS	Rwy Idg	9000
095°	TDZE	1000
	Apt Elev	1026

RNAV (RNP) Z RWY 10

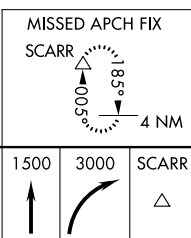
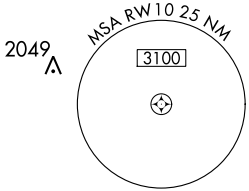
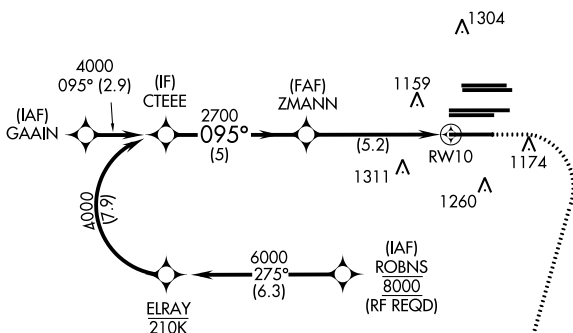
HARTSFIELD-JACKSON ATLANTA INTL (ATL)

▽ For uncompensated Baro-VNAV systems, procedure NA below -8°C (18°F) or above 54°C (130°F). GPS required. Simultaneous approach authorized; arrival from ROBNS NA. For inop ALS, increase RNP 0.11 DA all Cats visibility to RVR 4500.

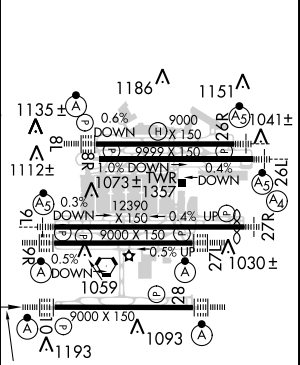
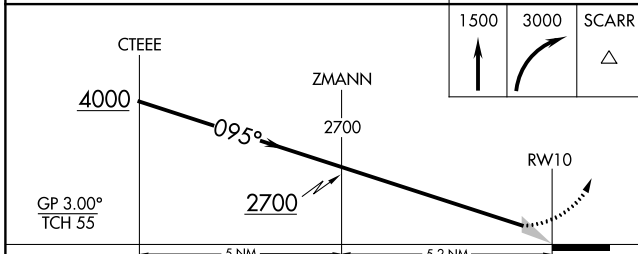
ALSF-2
 MISSED APPROACH: Climb to 1500 then climbing right turn to 3000 direct SCARR and hold.

D-ATIS ARR 119.65	ATLANTA APP CON 127.9 379.9	ATLANTA TOWER					ALL RWYS	GND CON	ALL RWYS
DEP 125.55		8L-26R	8R-26L	9L-27R	9R-27L	10-28	(8L-26R,8R-26L) (9L-27R,9R-27L)	10-28	121.9 121.75 121.65 254.4

2049 Δ
 2049 Δ
 CLNC DEL **118.1** CPDLC



ELEV 1026 **D** TDZE 1000



GP 3.00° TCH 55	5 NM		5.2 NM	
CATEGORY	A	B	C	D
RNP 0.11 DA		1290/24	290 (300-1/2)	
RNP 0.30 DA		1456/50	456 (500-1)	

AUTHORIZATION REQUIRED

HIRL all Rwys
 TDZ/CL Rwys 8L, 9R,
 10, 26R, 27L and 28

SE-4, 31 JAN 2019 to 28 FEB 2019

SE-4, 31 JAN 2019 to 28 FEB 2019