

# RNAV (GPS) PRM Y RWY 8L (SIMULTANEOUS CLOSE PARALLEL) HARTSFIELD-JACKSON ATLANTA INTL (ATL)

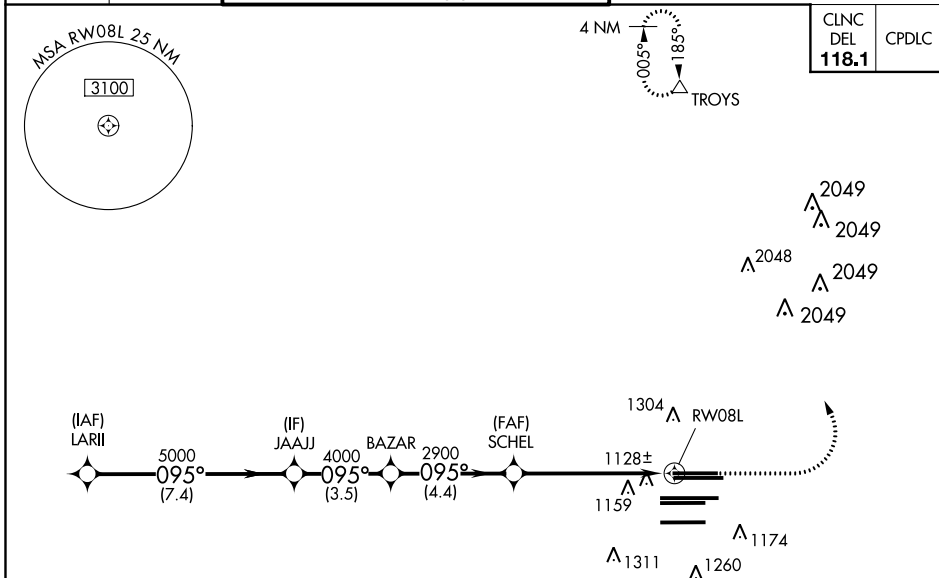
WAAS CH <b>99300</b> <b>W08B</b>	APP CRS <b>095°</b>	Rwy Idg <b>8800</b> TDZE <b>1015</b> Apt Elev <b>1026</b>
--	------------------------	--

**NA** For uncompensated Baro-VNAV systems, LNAV/VNAV NA below -7°C (20°F) or above 54°C (130°F). DME/DME RNP-0.3 NA. For inop ALSF-2, increase LNAV/VNAV all Cats visibility to 1/4 miles. Simultaneous close parallel approach authorized with ILS PRM and RNAV PRM Rwy 9L or 9R or 10, or Rwys 9L and 10, or Rws 9R and 10. Dual VHF comm required. See additional requirements on AAUP. Use of FD or AP providing RNAV track guidance required during simultaneous operations.

**ALSF-2**

**MISSED APPROACH:**  
Climb to 1500 then climbing left turn to 3500 direct TROYS and hold.

D-ATIS ARR <b>119.65</b> DEP <b>125.55</b>	ATLANTA APP CON <b>127.9 379.9</b>	ATLANTA TOWER ALL RWYS 8L-26R 8R-26L 9L-27R 9R-27L 10-28 <b>119.1 125.325 123.85 119.3 119.5 254.4</b> <b>PRM 126.9</b>				GND CON (8L-26R,8R-26L) (9L-27R,9R-27L) 10-28 <b>121.9 121.75 121.65 254.4</b>	ALL RWYS <b>254.4</b>
--	--	---	--	--	--	--	--------------------------

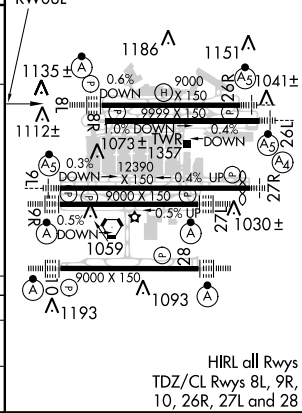


ELEV 1026	<b>D</b> TDZE 1015
-----------	--------------------

VGSI and RNAV glidepath not coincident (VGSI Angle 3.00/TCH 70).

1500	3500	TROYS
↑	↘	△

CATEGORY	A	B	C	D
LPV DA		1215/18	200 (200-1/2)	
LNAV/VNAV DA		1404/45	389 (400-7/8)	



# RNAV (GPS) PRM Y RWY 8L (SIMULTANEOUS CLOSE PARALLEL)

SE-4, 31 JAN 2019 to 28 FEB 2019

SE-4, 31 JAN 2019 to 28 FEB 2019