

ATLANTA, GEORGIA

AL-26 (FAA)

# RNAV (GPS) PRM Y RWY 10 (SIMULTANEOUS CLOSE PARALLEL) HARTSFIELD-JACKSON ATLANTA INTL (ATL)

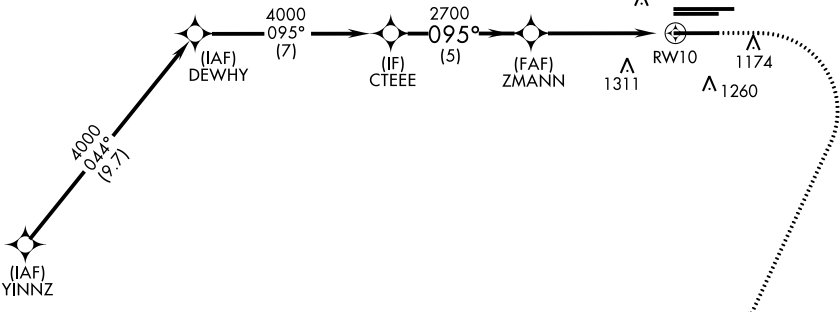
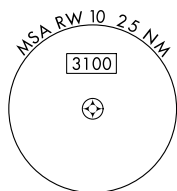
WAAS CH <b>40399</b> <b>W10A</b>	APP CRS <b>095°</b>	Rwy Idg TDZE <b>1000</b> Apt Elev <b>1026</b>
--	------------------------	---

For uncompensated Baro-VNAV systems, LNAV/VNAV NA below -7°C (20°F) or above 54°C (130°F). DME/DME RNP-0.3 NA. For inop ALSF-2, increase LNAV/VNAV all Cats visibility to 1½ mile. Simultaneous close parallel approach authorized with ILS PRM and RNAV PRM Rwy 8L or 8R or 9L or 9R, or Rwys 8L and 9L, or Rwys 8L and 9R, or Rwys 8R and 9L, or Rwys 8R and 9R. See additional requirements on AAUP. Dual VHF comm required. Use of FD or AP providing RNAV track guidance required during simultaneous operations.

MISSED APPROACH: Climb to 1500 then climbing right turn to 3000 direct SCARR and hold.

D-ATIS ARR <b>119.65</b> DEP <b>125.55</b>	ATLANTA APP CON <b>127.9 379.9</b>	ATLANTA TOWER 8L-26R 8R-26L 9L-27R 9R-27L 10-28 RWYS <b>119.1 125.325 123.85 119.3 119.5 254.4</b> <b>PRM 133.425</b>	ALL RWYS <b>121.9</b>	GND CON (8L-26R,8R-26L) (9L-27R,9R-27L) 10-28 <b>121.75 121.65 254.4</b>	ALL RWYS
--	--	--	-----------------------------	--	-------------

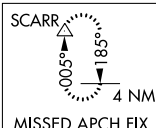
2048 $\Delta$	CLNC DEL <b>118.1</b>	CPDLC
$\Delta$ 2049		



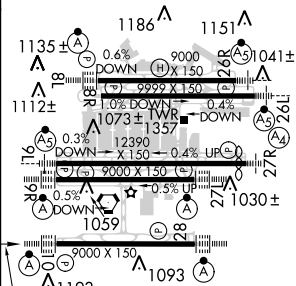
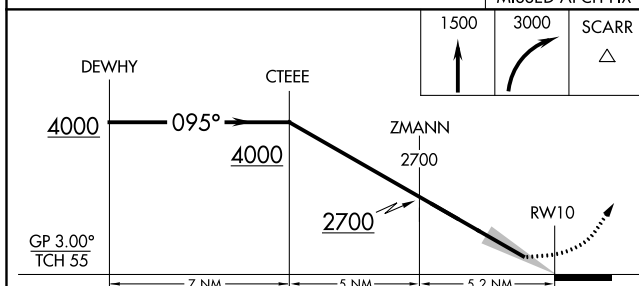
SE-4, 31 JAN 2019 to 28 FEB 2019

SE-4, 31 JAN 2019 to 28 FEB 2019

**RADAR REQUIRED**



ELEV 1026	<b>D</b> TDZE 1000
-----------	--------------------



CATEGORY	A	B	C	D
LPV DA		1200/18	200 (200-½)	
LNAV/VNAV DA		1455/55	455 (500-1)	

095° to RWY 10  
HIRL all Rwys  
TDZ/CL Rwys 8L, 9R, 10, 26R, 27L and 28

ATLANTA, GEORGIA  
Orig-A 12OCT17

33°38'N-84°26'W

HARTSFIELD-JACKSON ATLANTA INTL (ATL)

## RNAV (GPS) PRM Y RWY 10 (SIMULTANEOUS CLOSE PARALLEL)