

WAAS CH <b>62800</b> <b>W09D</b>	APP CRS <b>095°</b>	Rwy Idg <b>11730</b> TDZE <b>1019</b> Apt Elev <b>1026</b>
--	------------------------	--

# RNAV (GPS) RWY 9L

HARTSFIELD-JACKSON ATLANTA INTL (ATL)

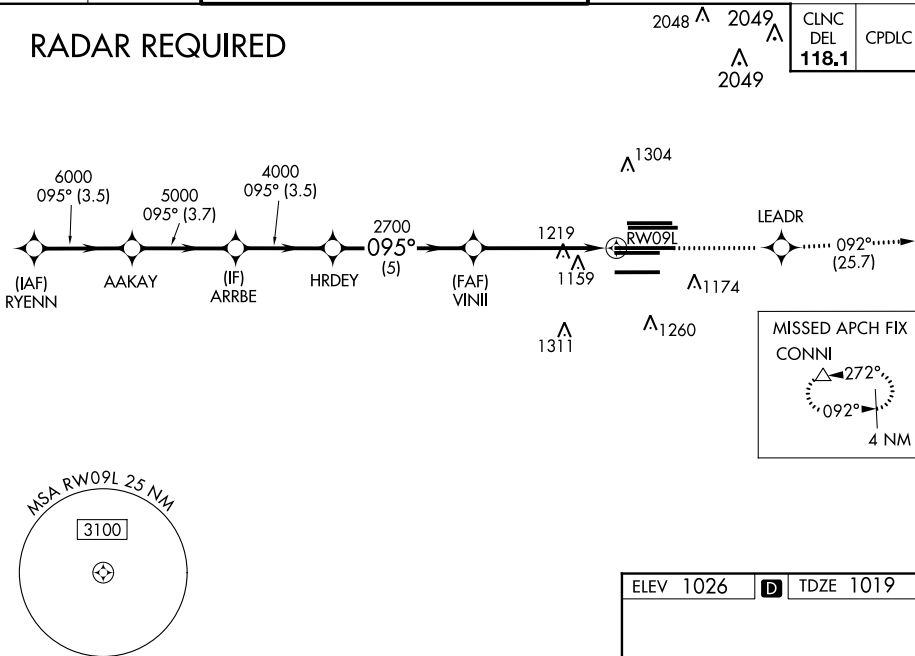
**▽** For uncompensated Baro-VNAV systems, LNAV/VNAV NA below -7°C (20°F) or above 54°C (130°F). DME/DME RNP-0.3 NA. For Inop MALSR, increase RNAV Cats A and B visibility to RVR 5500. Helicopter visibility reduction below RVR 4000 NA. Simultaneous approach authorized with Rwy 8L or 8R or 10, or Rwy 8L and 10. LNAV procedure NA during simultaneous operations. Use of FD or AP providing RNAV track guidance required during simultaneous operations. \*\*RVR 1800 authorized with use of FD or AP or HUD to DA.



MISSED APPROACH: Climb to 4000 direct LEADR and on track 092° to CONNI and hold.

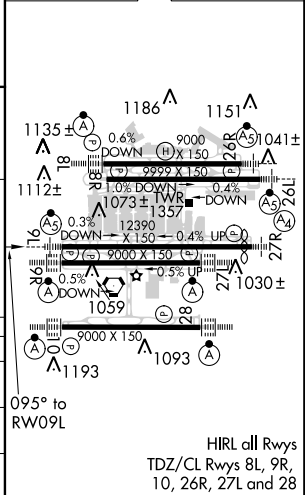
D-ATIS ARR <b>119.65</b>	ATLANTA APP CON	ATLANTA TOWER					ALL RWYS	GND CON	ALL RWYS
DEP <b>125.55</b>	<b>127.9 379.9</b>	<b>119.1</b>	<b>125.325</b>	<b>123.85</b>	<b>119.3</b>	<b>119.5</b>	<b>121.9</b>	<b>121.75</b>	<b>121.65 254.4</b>

## RADAR REQUIRED



ELEV 1026	<b>D</b>	TDZE 1019
-----------	----------	-----------

RYENN	VGSIs and RNAV glidepath not coincident (VGSi Angle 3.00/TCH 71).		4000	LEADR	tr 092°	CONNI
7000	6000	5000	4000	2700		
	GP 3.00° TCH 56				*LNAV only.	
	3.5 NM	3.7 NM	3.5 NM	5 NM	3.9 NM	1.2 NM
CATEGORY	A	B	C	D		
LPV DA **		1219/24	200 (200-½)			
LNAV/VNAV DA		1405/40	386 (400-¾)			
LNAV MDA	1480/40	461 (500-¾)	1480/50	461 (500-1)		



HIRL all Rwys  
TDZ/CL Rwys 8L, 9R,  
10, 26R, 27L and 28

SE-4, 31 JAN 2019 to 28 FEB 2019

SE-4, 31 JAN 2019 to 28 FEB 2019