

WAAS CH 56300 W26A	APP CRS 275°	Rwy Idg TDZE 996 Apt Elev 1026	9999
--	------------------------	--	-------------

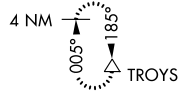
RNAV (GPS) RWY 26L
HARTSFIELD-JACKSON ATLANTA INTL (ATL)

▼ For uncompensated Baro-VNAV systems, LNAV/VNAV NA below -7°C (20°F) or above 54°C (130°F). DME/DME RNP-0.3 NA. For inop MALSR, increase LPV all Cats visibility to RVR 4500, LNAV/VNAV all Cats visibility to RVR 6000. Simultaneous approach authorized with Rwy 27L or 27R or 28. LNAV procedure NA during simultaneous operations. Use of FD or AP providing RNAV track guidance required during simultaneous operations.

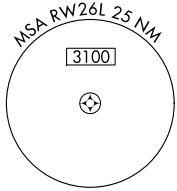
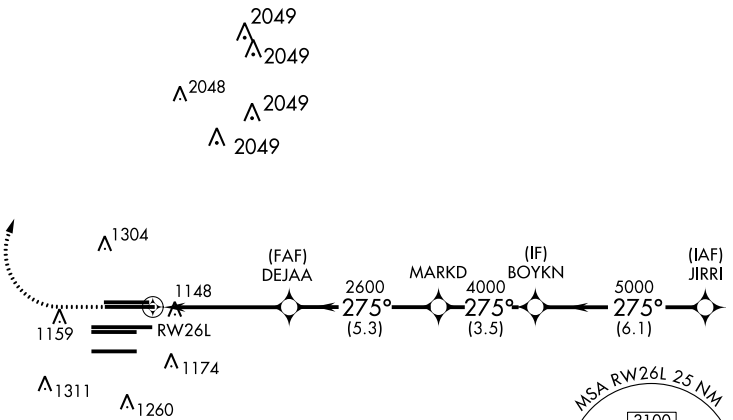


MISSED APPROACH:
Climb to 1500 then climbing right turn to 3500 direct TROYS and hold.

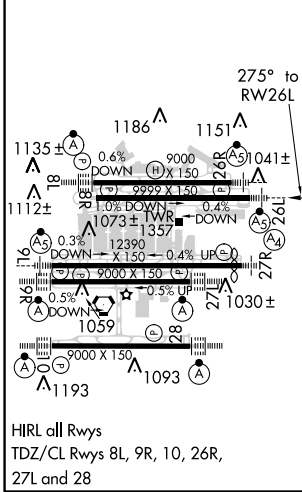
D-ATIS ARR 119.65	ATLANTA APP CON DEP 125.55	ATLANTA TOWER 8L-26R 8R-26L 9L-27R 9R-27L 10-28 RWYS					ALL RWYS 121.9	GND CON (8L-26R,8R-26L) (9L-27R,9R-27L) 10-28 RWYS 121.75	ALL RWYS 121.65	254.4
-----------------------------	---	---	--	--	--	--	-----------------------------	--	------------------------------	--------------



CLNC DEL	CPDLC
118.1	



ELEV 1026	D	TDZE 996
-----------	----------	----------



HIRL all Rwy
TDZ/CL Rwy 8L, 9R, 10, 26R,
27L and 28

RADAR REQUIRED

1500	3500	TROYS	VGSi and RNAV glidepath not coincident (VGSi Angle 3.00°/TCH 63.)	
↑	↷	△	BOYKN	JIRRI
*LNAV only		MARKD	DEJAA	JIRRI
RW26L		2600	4000	5000
*1.3 NM to RW26L		2600	4000	5000
RW26L		2600	4000	5000
1.3		3.6 NM	5.3 NM	3.5 NM
6.1 NM		GP 3.00° TCH 52		
CATEGORY	A	B	C	D
LPV DA		1281/24	285 (300-½)	
LNAV/VNAV DA		1360/35	364 (400-¾)	
LNAV MDA	1460/24	464 (500-½)	1460/50	464 (500-1)

SE-4, 31 JAN 2019 to 28 FEB 2019

SE-4, 31 JAN 2019 to 28 FEB 2019