

ILS PRM RWY 28 (SA CAT I) (SIMULTANEOUS CLOSE PARALLEL) HARTSFIELD-JACKSON ATLANTA INTL (ATL)

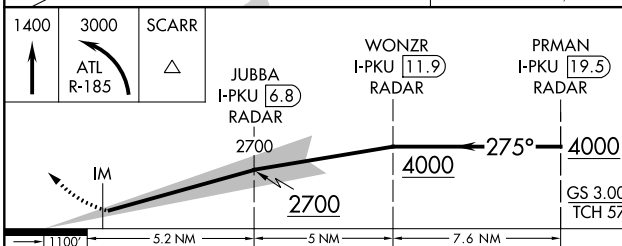
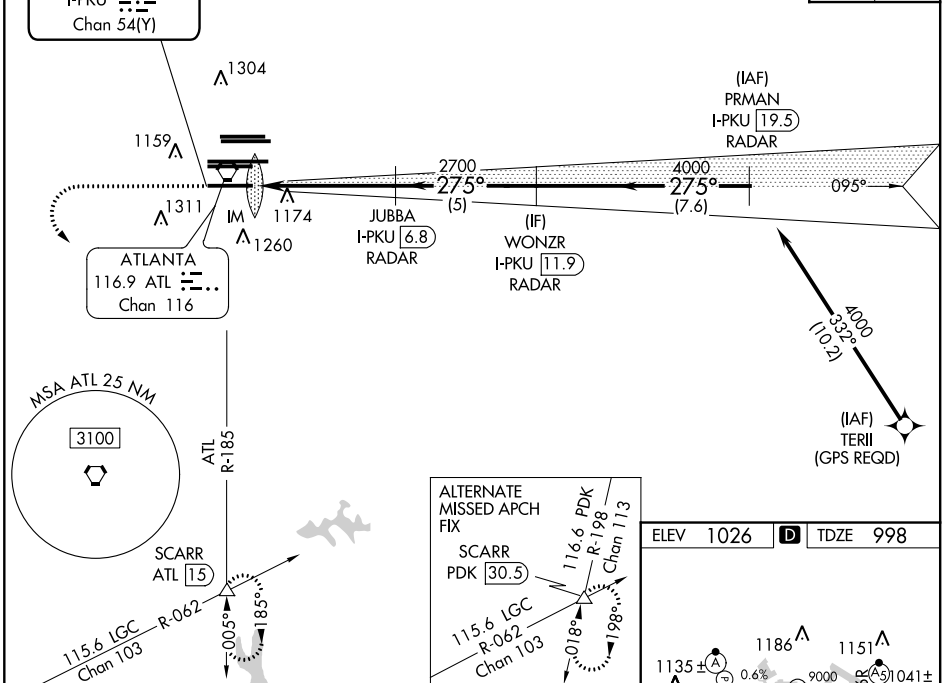
LOC/DME I-PKU 111.75 Chan 54 (Y)	APP CRS 275°	Rwy Idg 9000	TDZE 998
Apt Elev 1026			

Simultaneous close parallel approach authorized with ILS PRM and RNAV PRM Rwy 26R or 26L or 27R or 27L or Rwy 26R and 27R, or Rwy 26R and 27L, or Rwy 26L and 27R, or Rwy 26L and 27L. Procedure not authorized when glideslope not available. Dual VHF comm required. See additional requirements on AAUP. Requires specific OPSPEC, MSPEC, or LOA approval and use of HUD to DH.

MISSED APPROACH: Climb to 1400 then climbing left turn to 3000 on ATL VORTAC R-185 to SCARR INT/ATL 15 DME and hold.

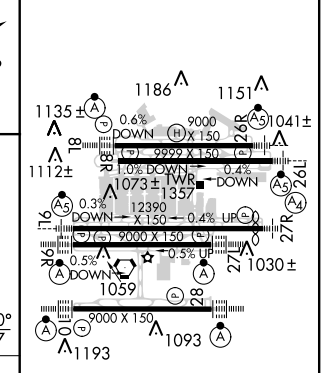
D-ATIS ARR 119.65 DEP 125.55	ATLANTA APP CON 127.9 379.9	ATLANTA TOWER ALL 8L-26R 8R-26L 9L-27R 9R-27L 10-28 RWYS 119.1 125.325 123.85 119.3 119.5 254.4 PRM 133.425	GND CON ALL (8L-26R,8R-26L) (9L-27R,9R-27L) 10-28 RWYS 121.9 121.75 121.65 254.4
--	---------------------------------------	--	---

GPS or RADAR REQUIRED



CLNC DEL 118.1	CPDLC
--------------------------	-------

ELEV 1026	D	TDZE 998
------------------	----------	-----------------



SA CATEGORY I ILS - SPECIAL AIRCREW & AIRCRAFT CERTIFICATION REQUIRED

HIRL all Rwy's
TDZ/CL Rwy's 8L, 9R, 10, 26R, 27L and 28

ILS PRM RWY 28 (SA CAT I) (SIMULTANEOUS CLOSE PARALLEL)

SE-4, 31 JAN 2019 to 28 FEB 2019

SE-4, 31 JAN 2019 to 28 FEB 2019