

ATLANTA, GEORGIA

AL-26 (FAA)

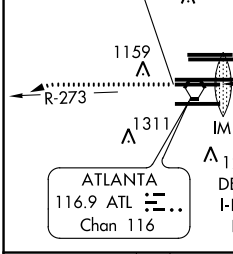
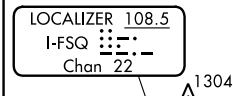
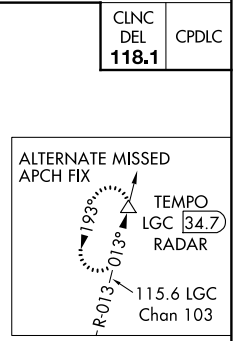
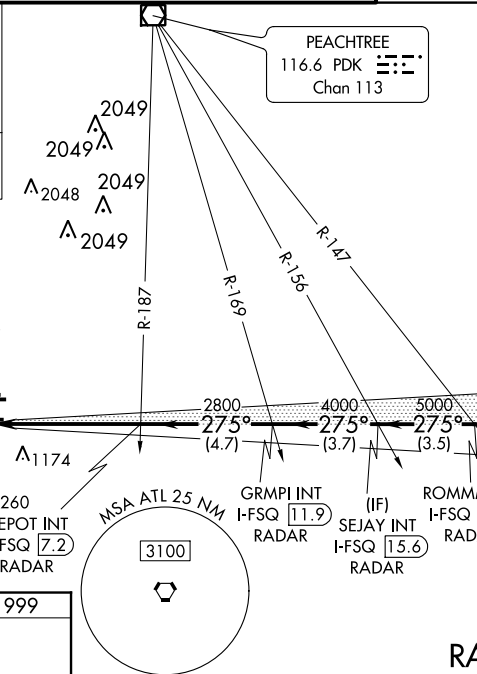
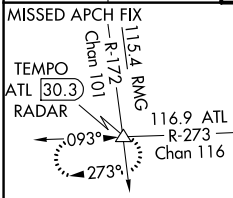
ILS PRM RWY 27L (CAT II) (SIMULTANEOUS CLOSE PARALLEL) HARTSFIELD-JACKSON ATLANTA INTL (ATL)

LOC/DME I-FSQ 108.5 Chan 22	APP CRS 275°	Rwy Idg TDZE Apt Elev 8865 999 1026
---	------------------------	---

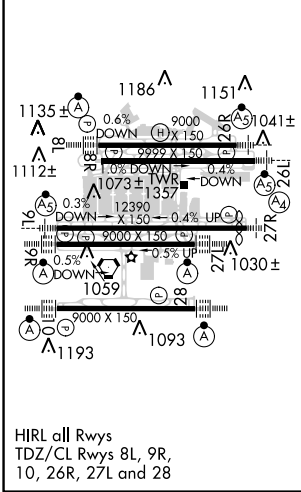
Simultaneous close parallel approach authorized with ILS PRM and RNAV PRM Rwy 26R or 26L or 28, or Rwy 26R and 28, or Rwy 26L and 28. Procedure not authorized when glideslope not available. Dual VHF comm required. See additional requirements on AAUP.

ALSF-2
MISSED APPROACH: Climb to 1400 then climbing left turn to 4000 on ATL VORTAC R-273 to TEMPO INT/ATL 30.3 DME and hold.

D-ATIS ARR 119.65 DEP 125.55	ATLANTA APP CON 127.9 379.9	ATLANTA TOWER ALL RWYS 8L-26R 8R-26L 9L-27R 9R-27L 10-28 119.1 125.325 123.85 119.3 119.5 254.4 PRM 132.55	GND CON ALL RWYS (8L-26R,8R-26L) (9L-27R,9R-27L) 10-28 121.9 121.75 121.65 254.4
--	---------------------------------------	---	---



ELEV 1026	D	TDZE 999
------------------	----------	-----------------



RADAR REQUIRED				
1400	4000	TEMPO	VGSI and ILS glidepath not coincident (VGSI Angle 3.00/TCH 79).	SLVAA I-FSQ [22.5] RADAR
ATL R-273			SEJAY INT I-FSQ [15.6] RADAR	ROMMM INT I-FSQ [19.1] RADAR
	DEPOT INT I-FSQ [7.2] RADAR	GRMPI INT I-FSQ [11.9] RADAR		
			275°	7000
			2800	
			4000	
			5000	
			6000	
			GS 3.00° TCH 58	
			1075	
			5.5 NM	
			4.7 NM	
			3.7 NM	
			3.5 NM	
			3.5 NM	
CATEGORY	A	B	C	D
S-ILS 27L		RA 127/12	100 DA 1099	

CATEGORY II ILS- SPECIAL AIRCREW & AIRCRAFT CERTIFICATION REQUIRED

ATLANTA, GEORGIA Amdt 3A 15OCT15

33°38'N-84°26'W

HARTSFIELD-JACKSON ATLANTA INTL (ATL)

ILS PRM RWY 27L (CAT II) (SIMULTANEOUS CLOSE PARALLEL)

SE-4, 31 JAN 2019 to 28 FEB 2019

SE-4, 31 JAN 2019 to 28 FEB 2019