

# ILS PRM RWY 27L

## (SIMULTANEOUS CLOSE PARALLEL)

### HARTSFIELD-JACKSON ATLANTA INTL (ATL)

LOC/DME I-FSQ <b>108.5</b> Chan <b>22</b>	APP CRS <b>275°</b>	Rwy Idg TDZE Apt Elev <b>8865</b> <b>999</b> <b>1026</b>
---	------------------------	---

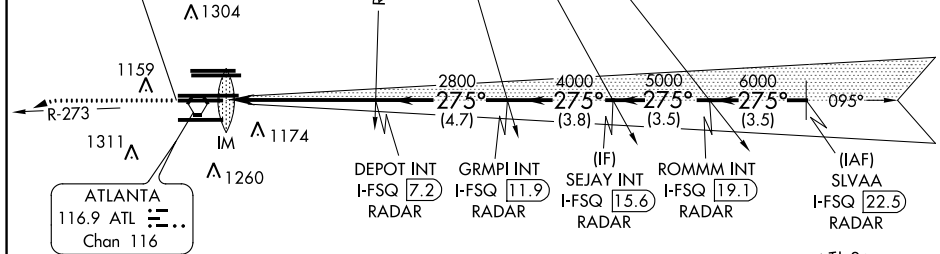
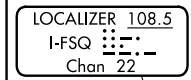
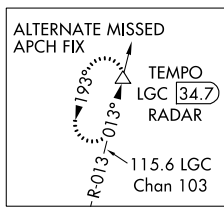
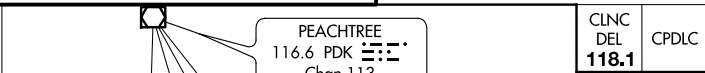
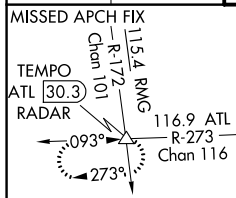
**⚠** Simultaneous close parallel approach authorized with ILS PRM and RNAV PRM Rwy 26R or 26L or 28, or Rwy 26R and 28, or Rwy 26L and 28. Procedure not authorized when glideslope not available. Dual VHF comm required. See additional requirements on AAUP.

ALSF-2

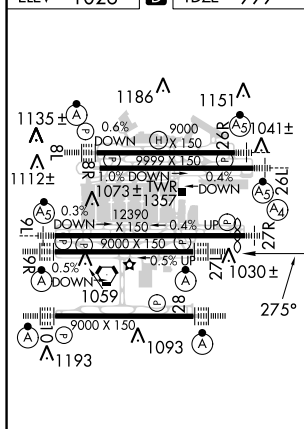


**MISSED APPROACH:** Climb to 1400 then climbing left turn to 4000 on ATL VORTAC R-273 to TEMPO INT/ATL 30.3 DME/RADAR and hold.

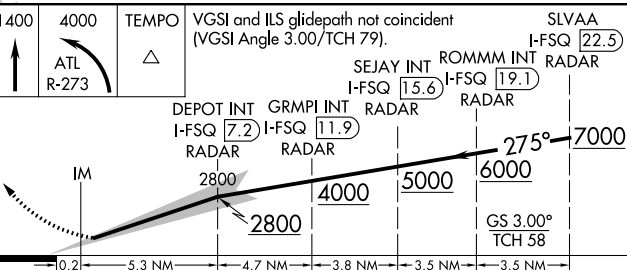
D-ATIS ARR <b>119.65</b> DEP <b>125.55</b>	ATLANTA APP CON <b>127.9 379.9</b>	ATLANTA TOWER 8L-26R 8R-26L 9L-27R 9R-27L 10-28 RWYS <b>119.1 125.325 123.85 119.3 119.5 254.4</b> PRM <b>132.55</b>	ALL RWYS (8L-26R,8R-26L) (9L-27R,9R-27L) 10-28 RWYS <b>121.9 121.75 121.65 254.4</b>	GND CON <b>121.75</b>	ALL RWYS <b>121.65 254.4</b>
--	---------------------------------------	---	--	--------------------------	---------------------------------



ELEV <b>1026</b>	<b>D</b>	TDZE <b>999</b>
------------------	----------	-----------------



### RADAR REQUIRED



HIRL all Rwy	TDZ/CL Rwy 8L, 9R, 10, 26R, 27L and 28
--------------	--

CATEGORY	A	B	C	D
S-ILS 27L	1199/18		200 (200-1/2)	

SE-4, 31 JAN 2019 to 28 FEB 2019

SE-4, 31 JAN 2019 to 28 FEB 2019