

ATLANTA, GEORGIA

AL-26 (FAA)

ILS PRM RWY 26R (SIMULTANEOUS CLOSE PARALLEL)

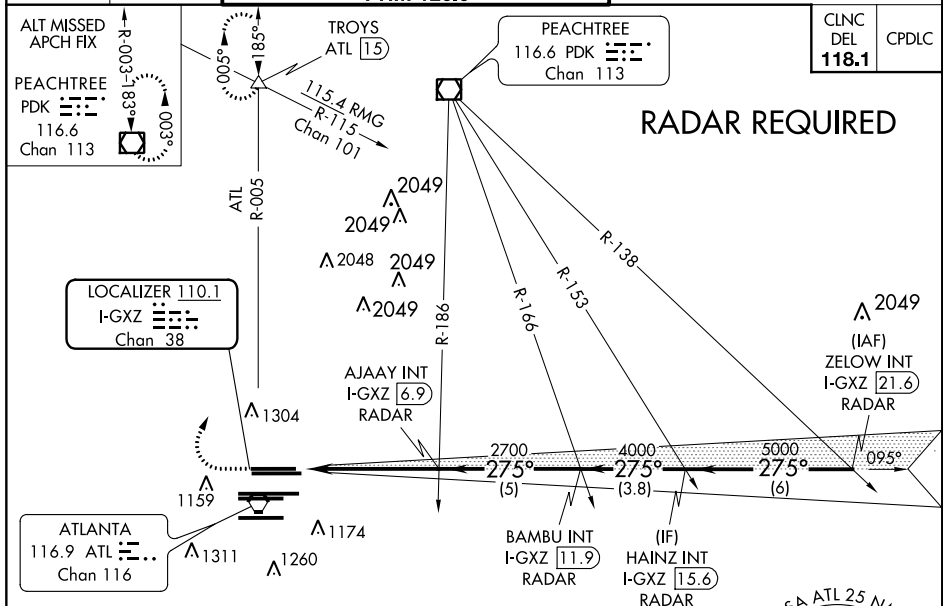
HARTSFIELD-JACKSON ATLANTA INTL (ATL)

LOC/DME I-GXZ 110.1 Chan 38	APP CRS 275°	Rwy ldg 8800 TDZE 990 Apt Elev 1026
---	------------------------	--

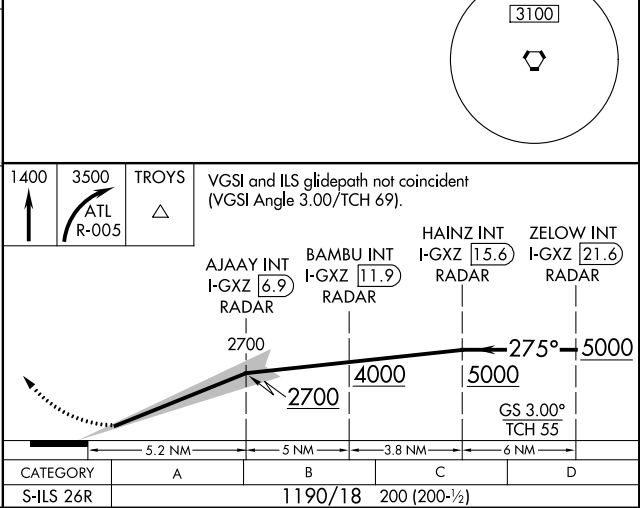
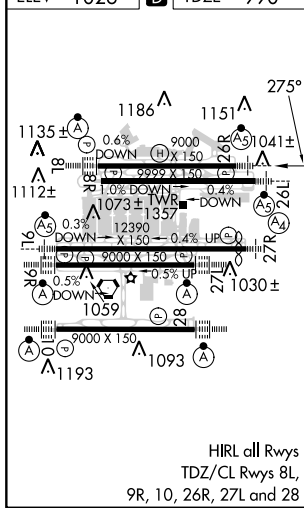
Simultaneous close parallel approach authorized with ILS PRM and RNAV PRM Rwy 27R or 27L or 28, or Rwys 27R and 28, or Rwys 27L and 28. Procedure not authorized when glideslope not available. Dual VHF comm required. See additional requirements on AAUP.

MALSR
MISSED APPROACH: Climb to 1400 then climbing right turn to 3500 on ATL VORTAC R-005 to TROYS INT/ATL 15 DME and hold.

D-ATIS ARR 119.65 DEP 125.55	ATLANTA APP CON 127.9 379.9	ATLANTA TOWER 8L-26R 8R-26L 9L-27R 9R-27L 10-28 RWYS 119.1 125.325 123.85 119.3 119.5 254.4 PRM 126.9	ALL RWYS (8L-26R,8R-26L) (9L-27R,9R-27L) 10-28 121.9 121.75 121.65 254.4	GND CON ALL RWYS 121.9 121.75 121.65 254.4
--	--	--	--	--



ELEV 1026	D	TDZE 990
------------------	----------	-----------------



SE-4, 31 JAN 2019 to 28 FEB 2019

SE-4, 31 JAN 2019 to 28 FEB 2019

ATLANTA, GEORGIA
Amdt 3 18SEP14

33°38'N-84°26'W

HARTSFIELD-JACKSON ATLANTA INTL (ATL)

ILS PRM RWY 26R (SIMULTANEOUS CLOSE PARALLEL)